





# Bilya Walk Track

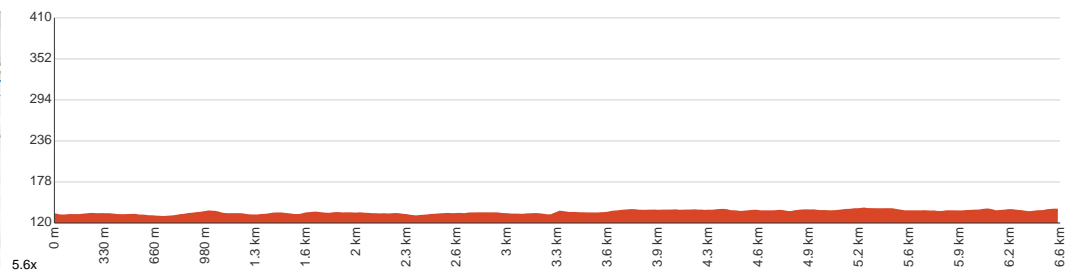
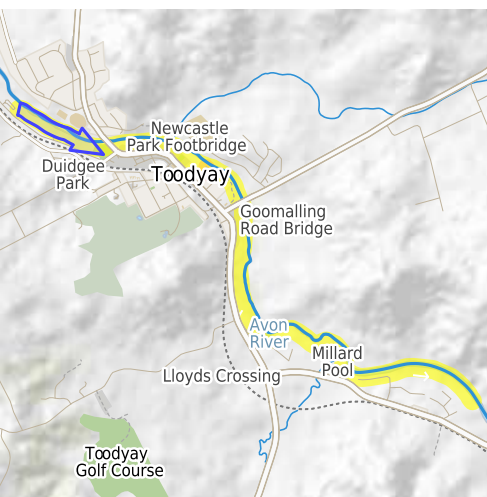
 3 h to 4 h  
 1 h to 2 h 15 min

  
13.1 km  
Return

  
↑ 85 m  
↓ 85 m

  
Easy track

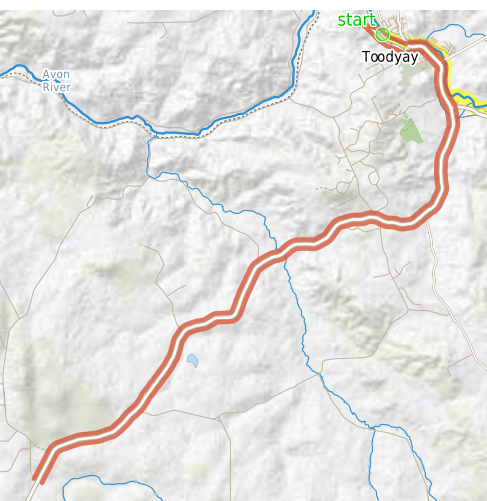
Starting from the Toodyay Caravan Park on Railway Road, Toodyay, this walk leads to Nardie Cemetery and back via the Bilya Walk Track. The Bilya Walk Track is a project by the "Toodyay Friends of the River" promoting the Avon River's cultural, heritage and environmental values. The marked and signposted track extends for about 6.9 kilometres from the Toodyay Caravan Park to Nardie Cemetery, providing opportunities to admire the town site's historic buildings. There is a grand array of birdlife and scenic vistas of the Avon River, and the diverse range of habitats provide for an exquisite range of wildflowers with some unique species. The John Masters Bird Hide, situated at Red Banks Pool, Lloyd Reserve, attracts many bird watchers, and walkers often pause to admire its design, peer through its windows to the river and read the informative posters depicting some of the birdlife in the area. Picnic facilities and seating have been installed along the track, providing excellent viewpoints to admire the Avon River. Extracts Weir and Millards Pool is quite close to the track. People usually watch the yearly Avon Descent from here. The track ends at the Nardie Cemetery, where most of the early settlers of Toodyay were buried. Let us begin by acknowledging the Traditional Custodians of the land on which we travel today, and pay our respects to their Elders past and present.



Class 2 of 6 Clear and well formed track or trail	
Quality of track	Clear and well formed track or trail (2/6)
Gradient	Gentle hills with occasional steps (2/6)
Signage	Clearly signposted (1/6)
Infrastructure	Generally useful facilities (such as fenced cliffs and seats) (2/6)
Experience Required	No experience required (2/6)
Weather	Weather generally has little impact on safety (2/6)

**Getting to the start:** From Toodyay Road, 50

- Turn on to Harper Road then drive for 165 m
- Turn right onto Railway Road and drive for another 1.2 km
- Turn right and drive for another 175 m



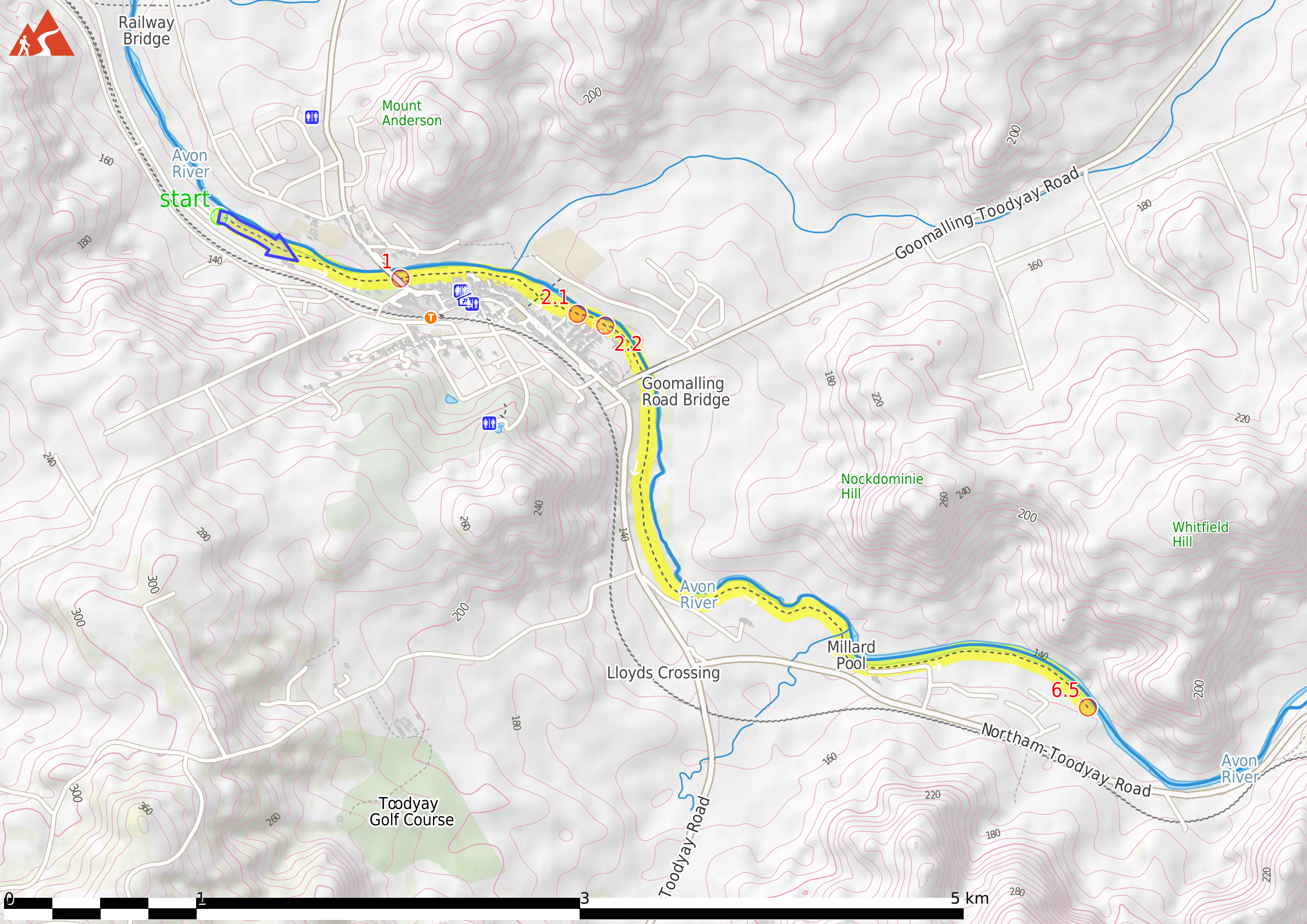
## Before you start any journey ensure you;

- Tell someone you trust where you are going and what to do if you are late returning
- Have adequate equipment, supplies, skills & knowledge to undertake this journey safely
- Consider weather forecasts, park/track closures & fire dangers
- Can respond to emergencies & call for help at any point
- Are healthy and fit enough for this journey

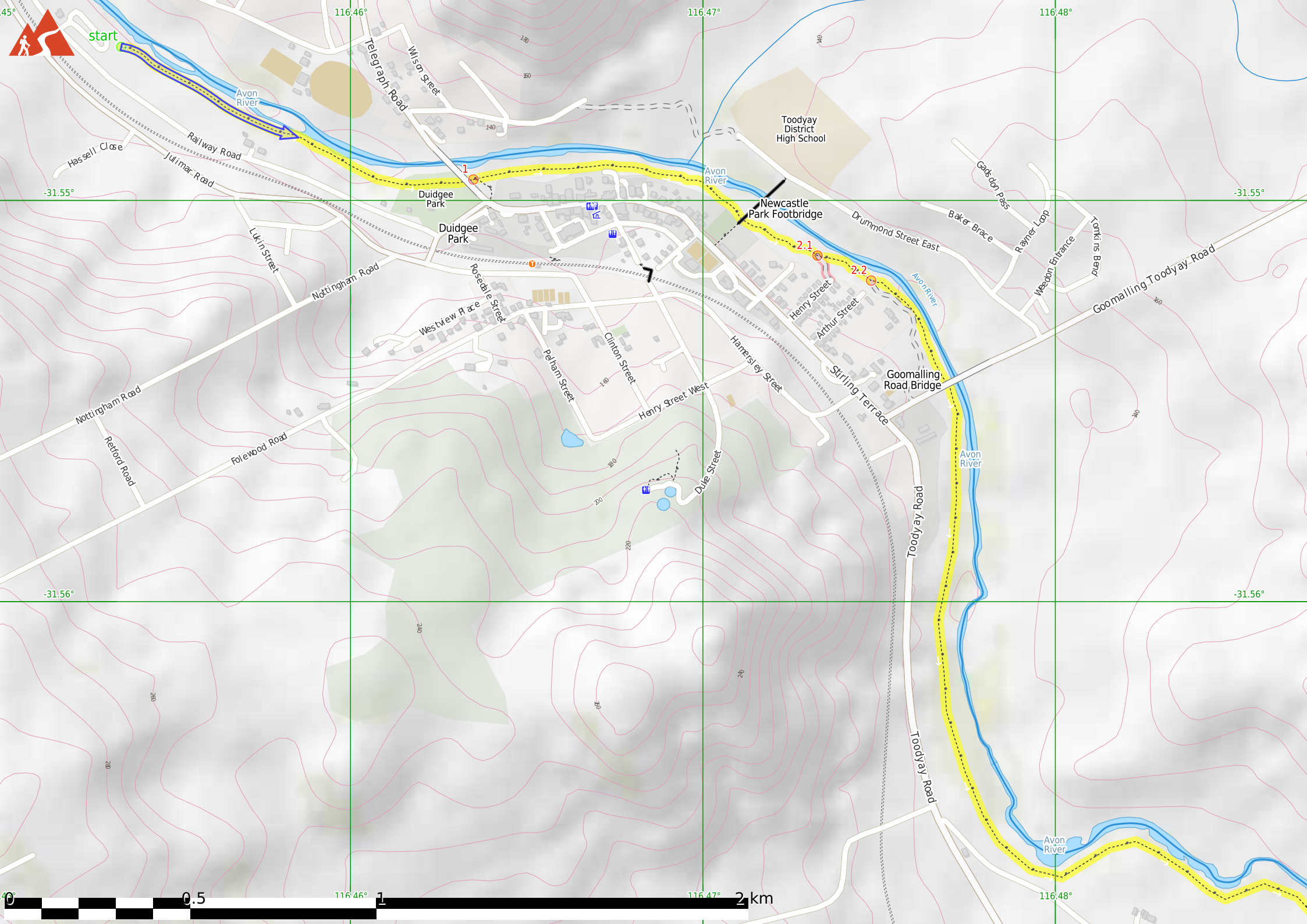
If not, change plans and stay safe. It is okay to delay and ask people for help.

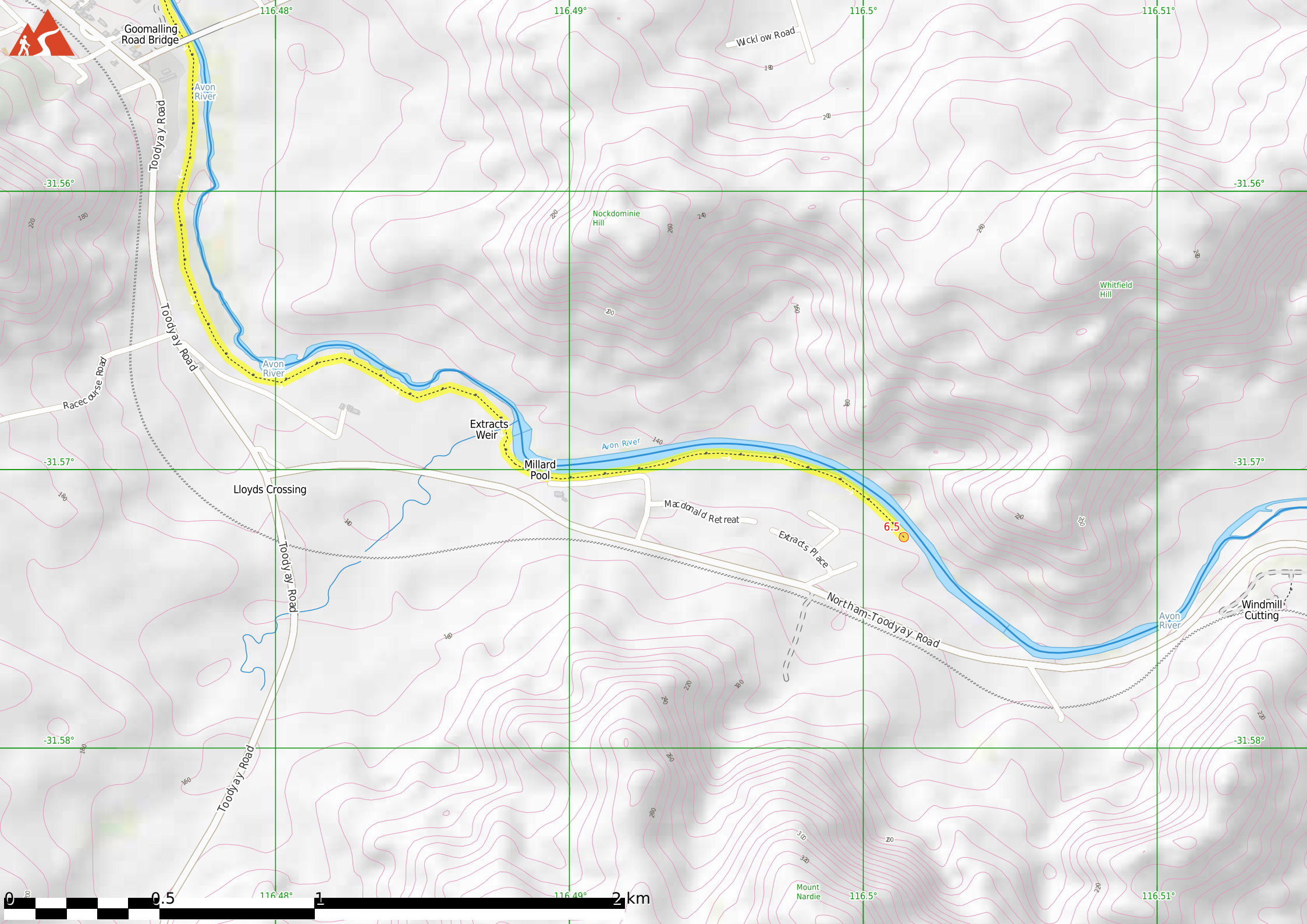
Share  
[Bushwalk.com](https://bushwalk.com/j/X7A6EC)  
[/j/X7A6EC](https://bushwalk.com/j/X7A6EC)

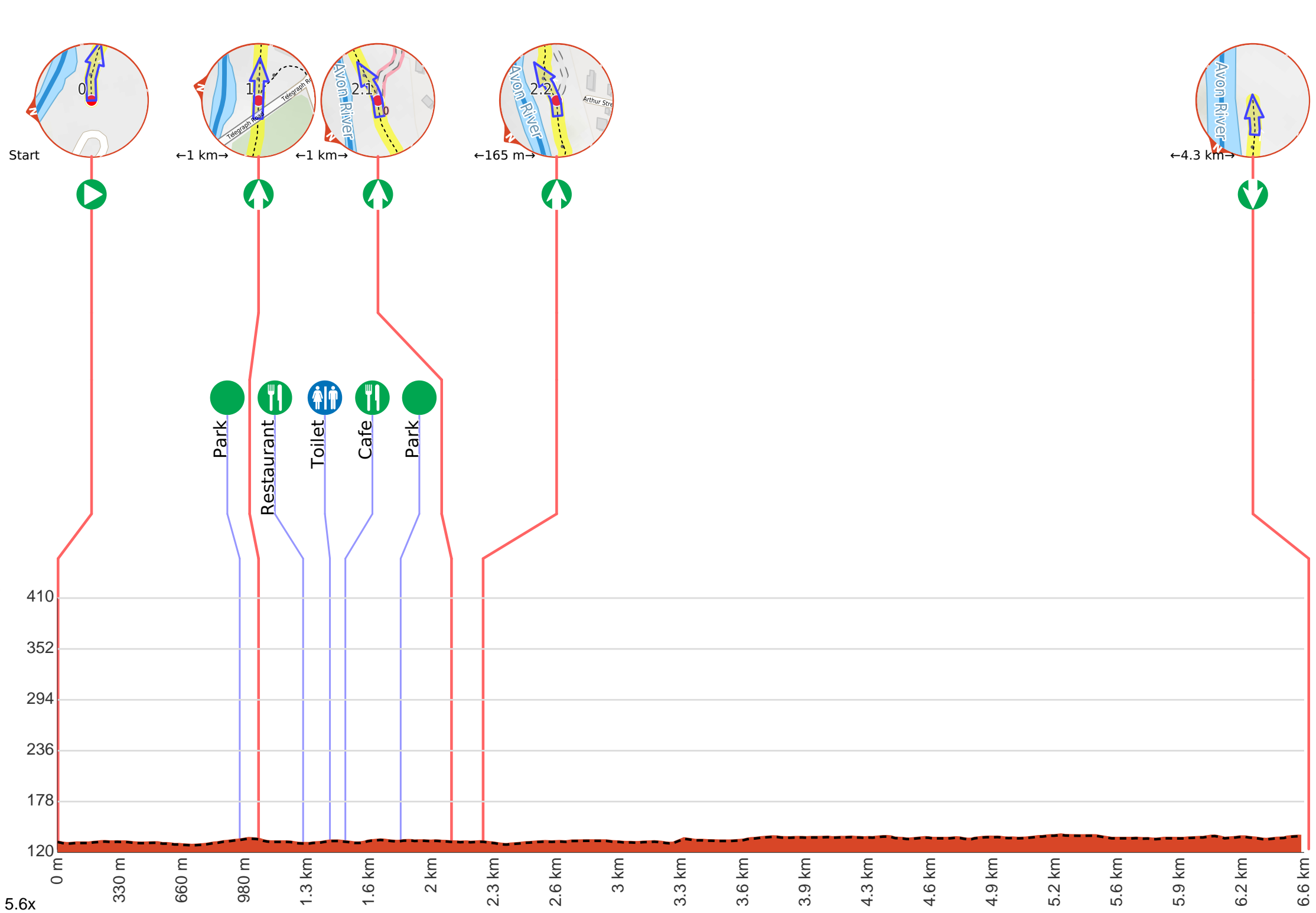








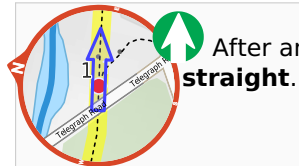




**Getting started:** From the northeastern end of Toodyay Caravan Park on Railway Road(1.17km northwest of intersection with Harper Road), head east along the singular walking track as you keep Avon River to your left. Keep left after passing under Telegraph Road to continue along Bilya Walk Track.



After 950 m head into the "Duidgee Park".



After another 235 m pass the "Cola Cafe" (110 m on your right).

After another 140 m pass the toilet (130 m on your right). This toilet is male and female.

After another 80 m pass the "Wendouree Tearooms" (90 m on your right).

After another 290 m pass the "Newcastle Park" (20 m on your right).

**Start of an alternate access route:** An alternate access point from/to Henry Street, Toodyay.

