



Mt Sugarloaf Red Track

(Awabakal Country)

 20 min to 1 h

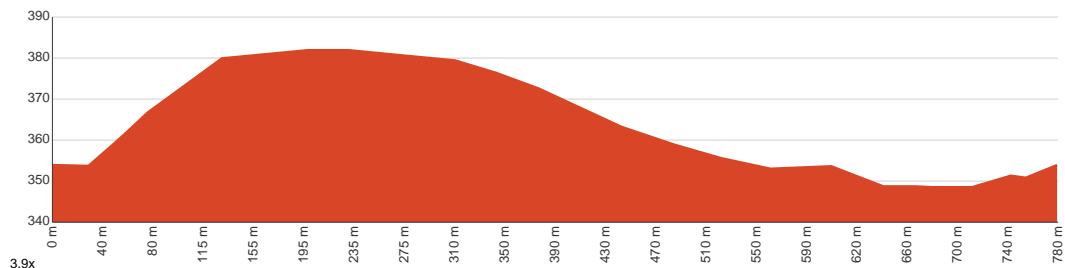

780 m
Circuit


↑ 35 m
↓ 35 m


Moderate track



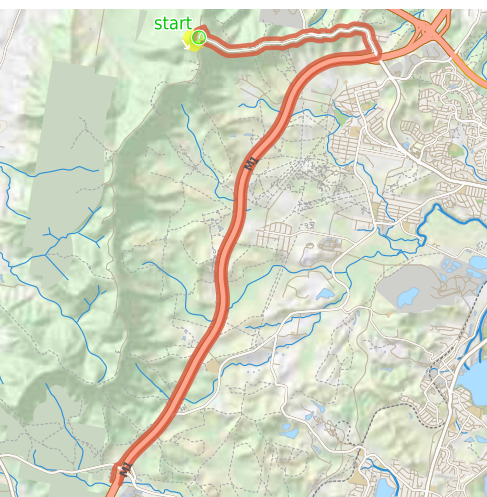
A must do if you're in the area, this walk travels through particularly attractive forest as it circumnavigates the summit of Mt Sugarloaf. The side trip to the summit of Mt Sugarloaf would best be done first, followed by a leisurely walk along the track. There are many picnic options, either during or at the end of walk. Enjoy the views and attractive forest on this walk. Let us begin by acknowledging the Awabakal people, Traditional Custodians of the land on which we travel today, and pay our respects to their Elders past and present.



Class 3 of 6
Formed track, with some branches and other obstacles

Quality of track	Formed track, with some branches and other obstacles (3/6)
Gradient	Short steep hills (3/6)
Signage	Directional signs along the way (3/6)
Infrastructure	Limited facilities, not all cliffs are fenced (3/6)
Experience Required	No experience required (1/6)
Weather	Weather generally has little impact on safety (1/6)

Getting to the start: From Palmers Road Exit



- Turn on to Palmers Road Exit then drive for 35 m
- Turn left onto Pacific Motorway Onramp and drive for another 12.4 km
- Keep left onto George Booth Drive Offramp and drive for another 640 m
- At roundabout, take exit 1 onto George Booth Drive and drive for another 1.8 km
- Turn left onto Mount Sugarloaf Road and drive for another 3.5 km

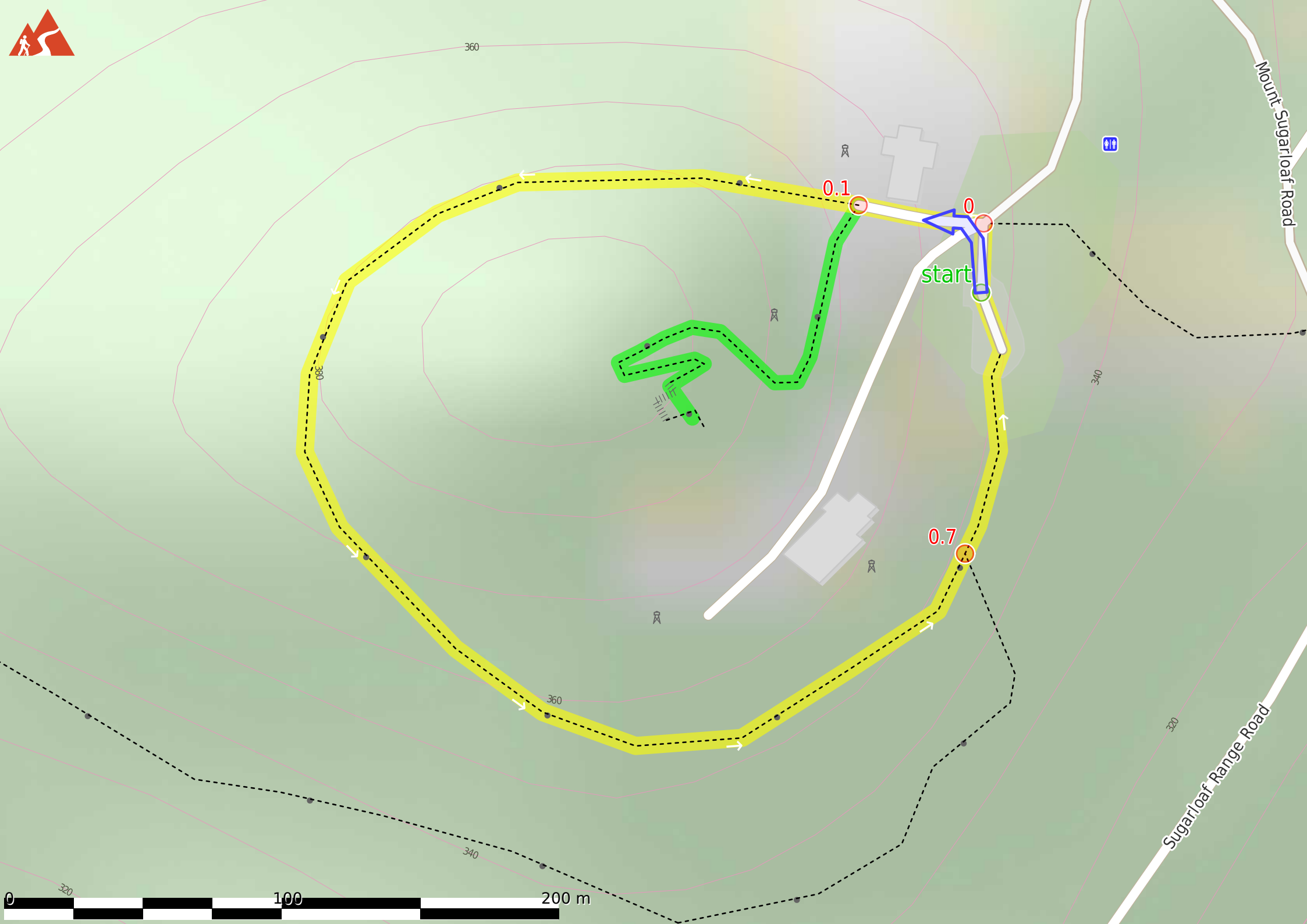
Before you start any journey ensure you;

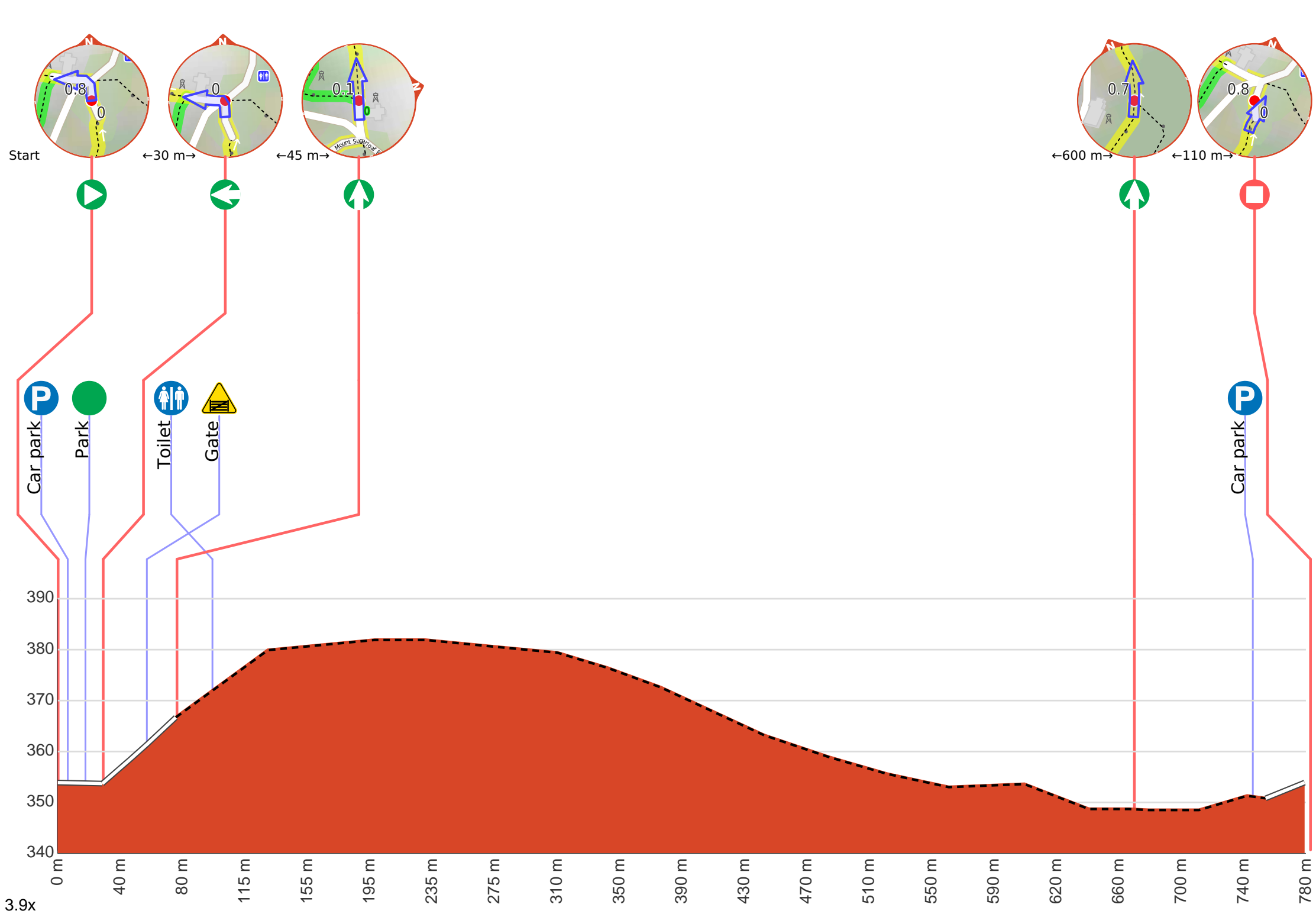
- Tell someone you trust where you are going and what to do if you are late returning
- Have adequate equipment, supplies, skills & knowledge to undertake this journey safely
- Consider weather forecasts, park/track closures & fire dangers
- Can respond to emergencies & call for help at any point
- Are healthy and fit enough for this journey

If not, change plans and stay safe. It is okay to delay and ask people for help.

Share
[Bushwalk.com](https://bushwalk.com/j/WV1ZUW)
[/j/WV1ZUW](https://bushwalk.com/j/WV1ZUW)







Getting started: From the car park, this walk follows the road gently downhill out of the car park, while keeping the pond on your left. The road is followed for about 35m, until coming to a four-way intersection, with a yellow stone monument (on your right).



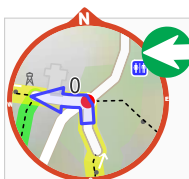
Start.



Find the car park at the start.



Find the park at the start.



After another 10 m **turn left**.

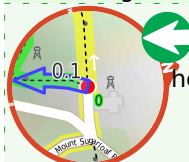


After another 70 m pass the toilet (65 m on your right).



Then head through/around the gate.

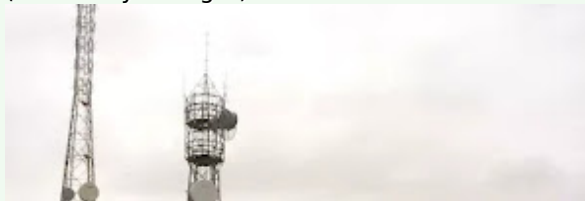
Start of an optional side trip: An optional side trip to Mt Sugarloaf Summit.



To start this optional side trip turn left here. **Start.**



After 175 m find the "Mount Sugarloaf Summit" (25 m on your right).



Mount Sugarloaf Summit is located in West Wallsend (25km west of Newcastle) and offers fabulous views of the surrounding countryside from a fenced lookout. The summit gives 360-degree views amongst three television transmitters of the coast and mountains. There is a black stone direction table to help you locate landmarks in the surrounding country. Mount Sugarloaf, also known as Great Sugar Loaf, is an extinct volcano. Unusually, on the 18th and 19th of July 1965, the mountain received 10 centimetres (4 in) of snow. It also snowed on the summit in the winter of 1975 .



Continue another 45 m to find Mount Sugarloaf at the end.



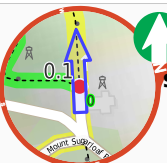
"Mount Sugarloaf".



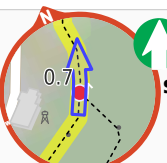
Turn around and retrace your steps back the 220 m to the main route.



Back at the main route veer left and follow on from the 75 m waypoint.



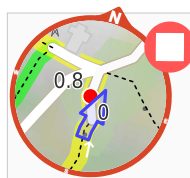
After another 20 m **continue straight**.



After another 600 m **continue straight**.



After another 75 m to find the car park.



After another 35 m come to the end.



"Mount Sugarloaf Car Park".



Mount Sugarloaf car park is located in West Wallsend (25km west of Newcastle) and offers fabulous views of the surrounding countryside. This car park is the starting point for many walks around Mount Sugarloaf. There is a pond, information sign and great views to the east.