




WW1 Hospital to Georges Heights Lookout

(Borogegal & Cammeraigal Country)

 20 min to 30 min

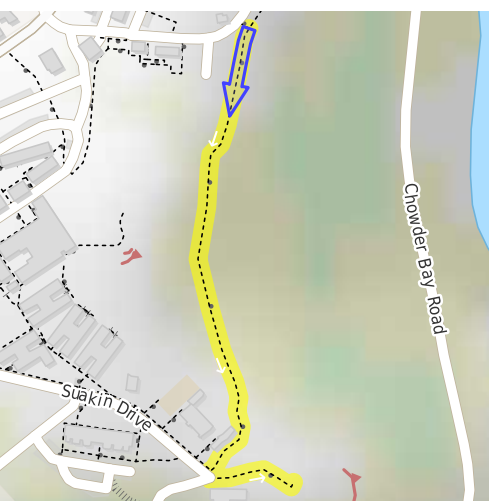
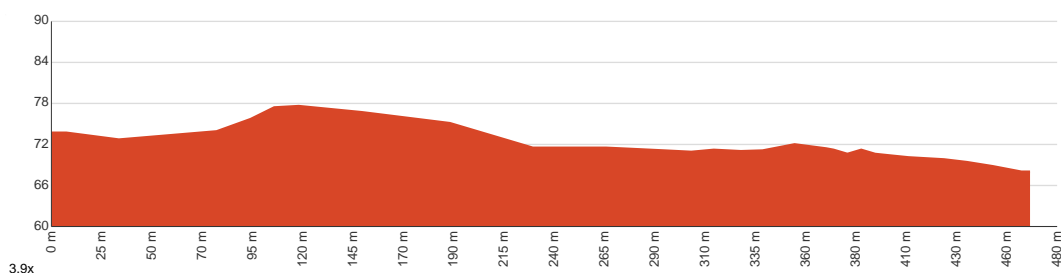

930 m
Return


↑ 20 m
↓ 20 m


Easy track



The WW1 hospital above Georges Head is an interesting collection of historic buildings, which are nicely complemented by Georges Heights Lookout. The walk follows a well-marked footpath with some excellent views and heathy bushland around it. Let us begin by acknowledging the Borogegal & Cammeraigal people, Traditional Custodians of the land on which we travel today, and pay our respects to their Elders past and present.



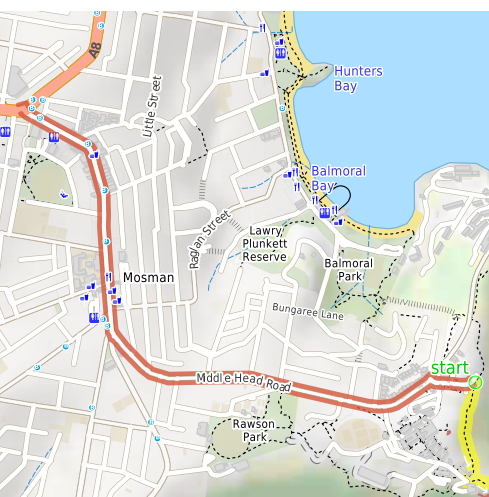
Class 2 of 6

Clear and well formed track or trail

Quality of track	Smooth and hardened path (1/6)
Gradient	Gentle hills with occasional steps (2/6)
Signage	Clearly signposted (1/6)
Infrastructure	Generally useful facilities (such as fenced cliffs and seats) (1/6)
Experience Required	No experience required (1/6)
Weather	Weather generally has little impact on safety (1/6)

Getting to the start: From Military Road, A8

- Turn on to Military Road then drive for 950 m
- At roundabout, take exit 1 onto Middle Head Road and drive for another 1.3 km
- Turn right onto Best Avenue and drive for another 25 m
- Turn slight left and drive for another 50 m
- Turn slight left and drive for another 85 m



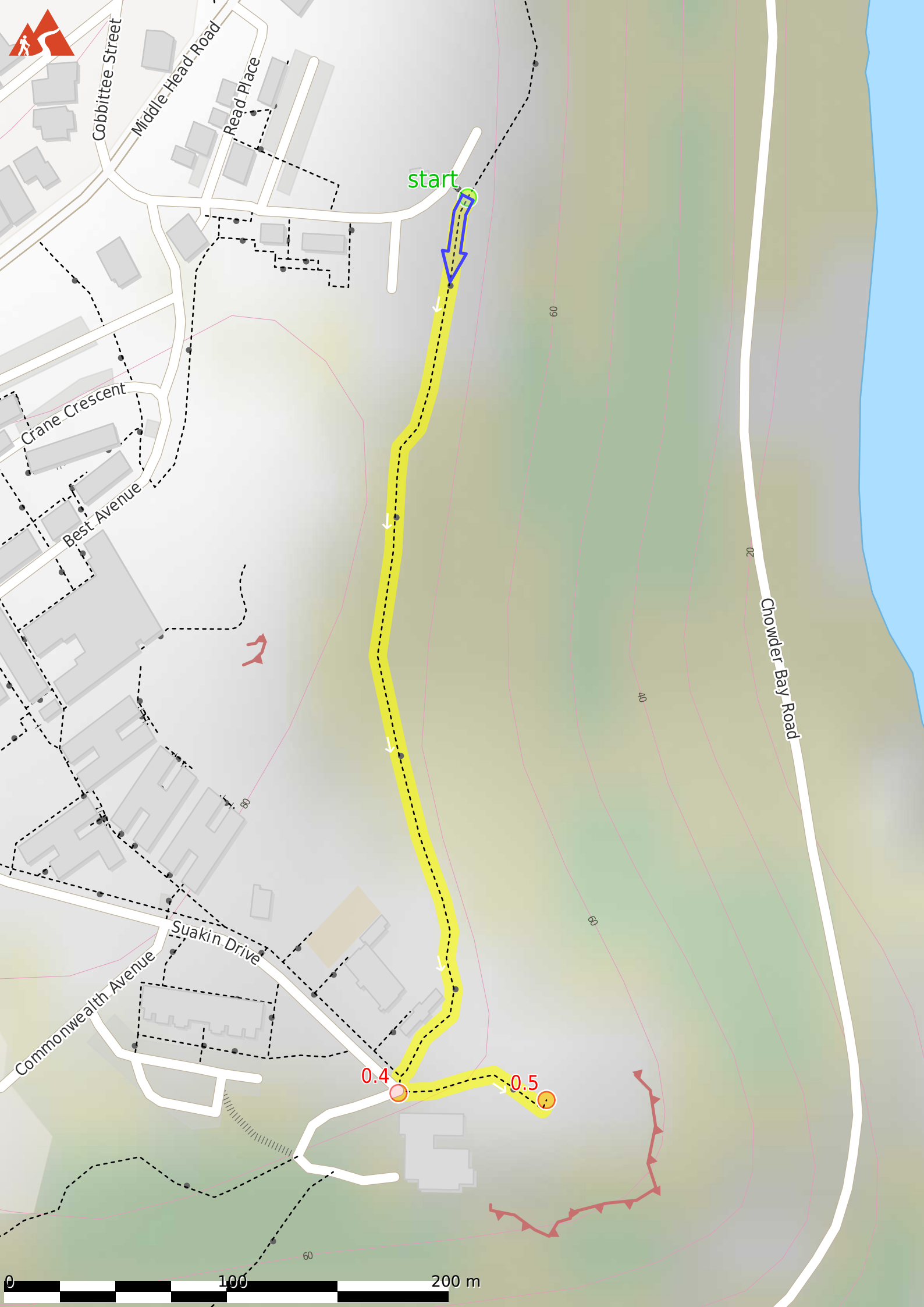
Before you start any journey ensure you;

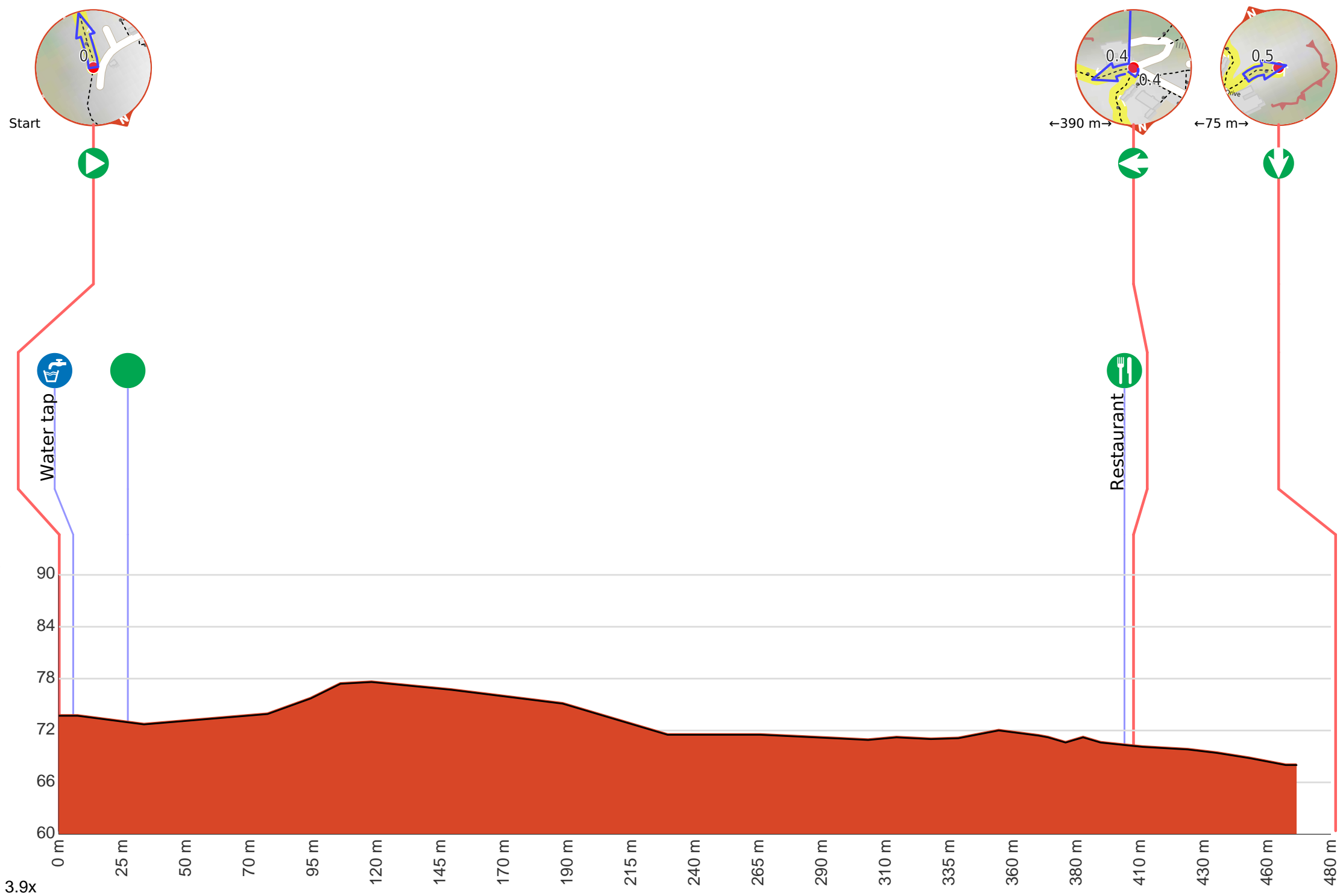
- Tell someone you trust where you are going and what to do if you are late returning
- Have adequate equipment, supplies, skills & knowledge to undertake this journey safely
- Consider weather forecasts, park/track closures & fire dangers
- Can respond to emergencies & call for help at any point
- Are healthy and fit enough for this journey

If not, change plans and stay safe. It is okay to delay and ask people for help.

Share
[Bushwalk.com](https://bushwalk.com/j/VRZ5WK)
[j/VRZ5WK](https://bushwalk.com/j/VRZ5WK)








Getting started: From the intersection, this walk heads down the hill, with the sea on the left. The track continues for a short while, coming to a signposted intersection at the road.

From the intersection, this walk follows the sign to Georges Head Lookout, down the hill to the circular paved lookout above the fortifications.




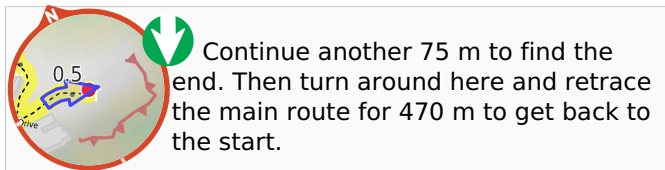
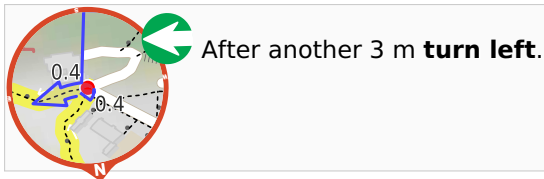
 There is water tap.

 Find the WW1 Hospital at the start.



This military hospital was in use from 1916 to 1923, and could treat up to 420 troops at any one time. Sydney Harbour Trust completed restoration of the buildings mid-2005. These buildings are New South Wales' only surviving military hospital buildings from WW1.

 After another 360 m pass the "The Gunners Barracks" (20 m on your left).



Continue another 75 m to find the end. Then turn around here and retrace the main route for 470 m to get back to the start.



"Georges Heights".



Georges Heights is a gun emplacement with a commanding 180-degree view over the entrance to the harbour. The old gun emplacements are still in position, with their arcs of fire explained in the signs nearby. The view from this lookout is magnificent.