



Honeysuckle Forest Track

(Biripi & Worimi Country)

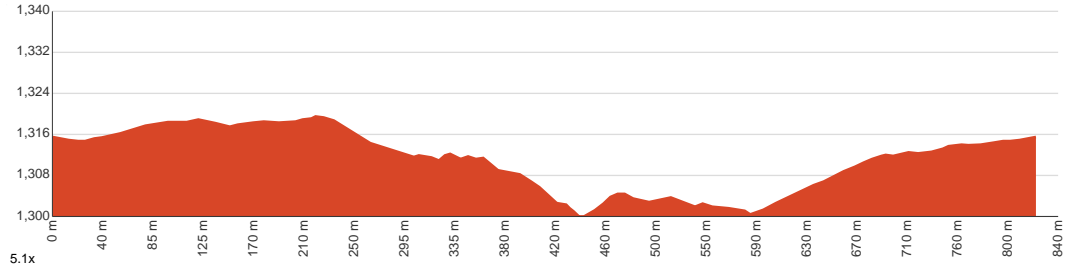
 15 min to 20 min


820 m
Circuit

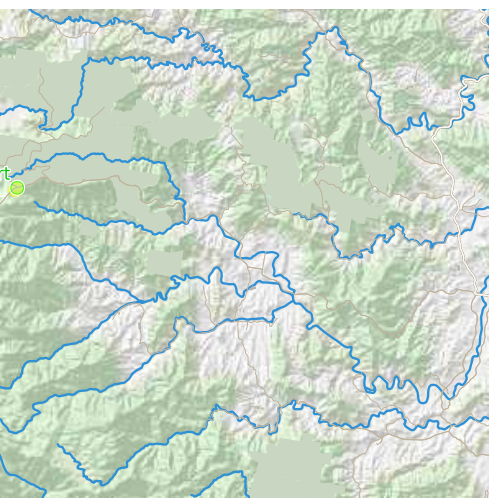

↑ 30 m
↓ 30 m

 3
Moderate track

This short circuit walk in Barrington Tops National Park starts from Honeysuckle Picnic Area, heads through rainforest and open forest of brown barrel with tall mountain banksia, also called honeysuckle. Let us begin by acknowledging the Biripi & Worimi people, Traditional Custodians of the land on which we travel today, and pay our respects to their Elders past and present.



Class 3 of 6 Formed track, with some branches and other obstacles	
Quality of track	Formed track, with some branches and other obstacles (3/6)
Gradient	Gentle hills with occasional steps (2/6)
Signage	Directional signs along the way (3/6)
Infrastructure	Limited facilities, not all cliffs are fenced (3/6)
Experience Required	Some bushwalking experience recommended (3/6)
Weather	Storms may impact on navigation and safety (3/6)



Getting to the start: From Thunderbolts Way

- Turn on to Scone Road, 29 then drive for 47.4 km
- Turn left and drive for another 50 m

Before you start any journey ensure you;

- Tell someone you trust where you are going and what to do if you are late returning
 - Have adequate equipment, supplies, skills & knowledge to undertake this journey safely
 - Consider weather forecasts, park/track closures & fire dangers
 - Can respond to emergencies & call for help at any point
 - Are healthy and fit enough for this journey
- If not, change plans and stay safe. It is okay to delay and ask people for help.

Share
Bushwalk.com
[/j/R1QSLO](https://www.bushwalk.com/j/R1QSLO)





Pheasant Creek Road

Barrington Tops Forest Road

start



Honeysuckle Walk

Honeysuckle Walk

Honeysuckle Walk

Honeysuckle Walk

Honeysuckle Walk

Honeysuckle Walk

1320

1300

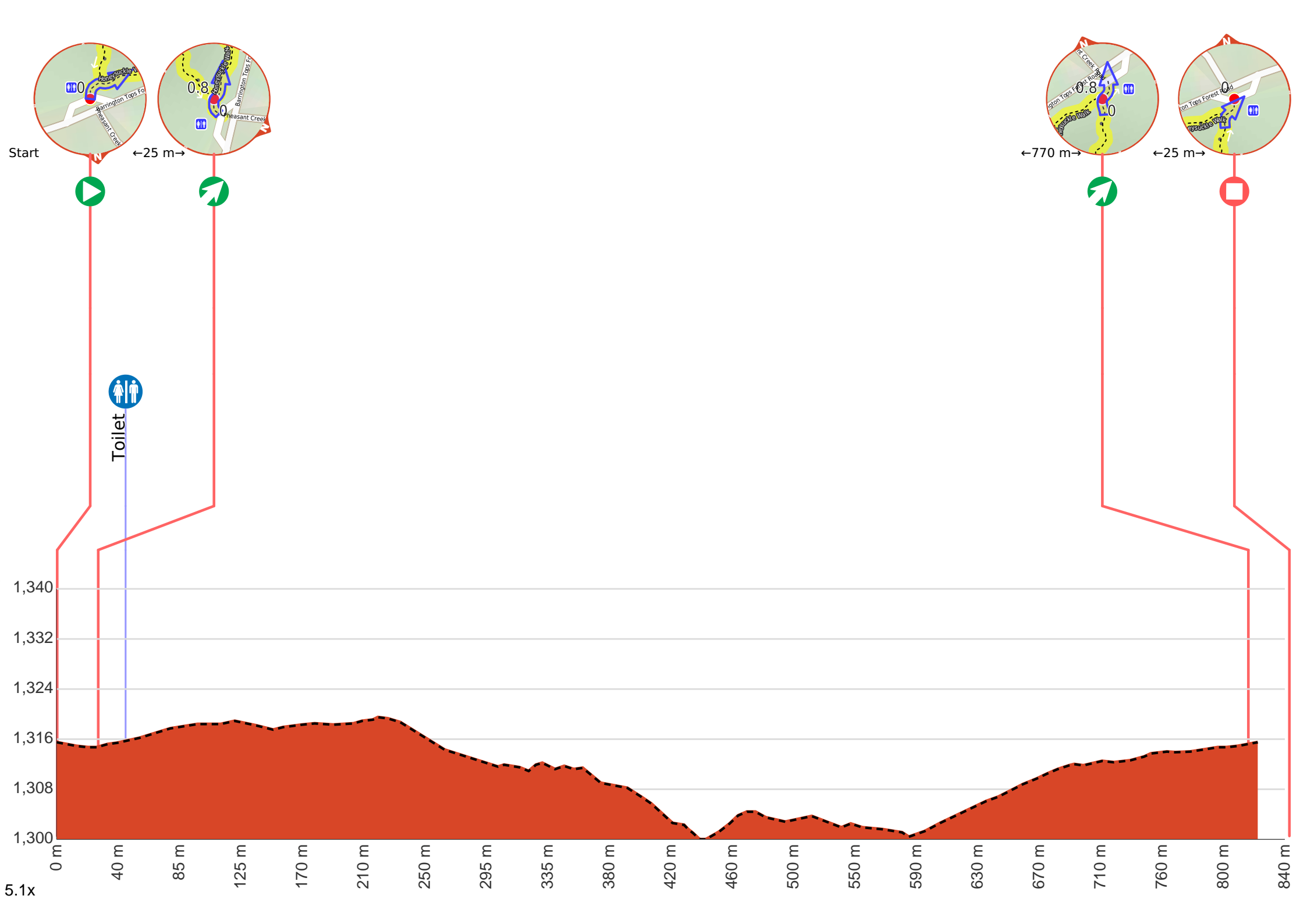
1300

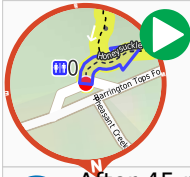
1280

1260

1300







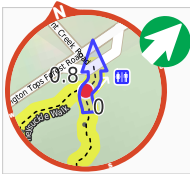
Start.



After 45 m pass the toilet (25 m on your left).



Veer right.



After another 770 m **veer right.**



After another 25 m come to the end.