



Gordon Reserve to Golf Links Lookout

(Dharug & Gundungurra Country)

 50 min to 1 h

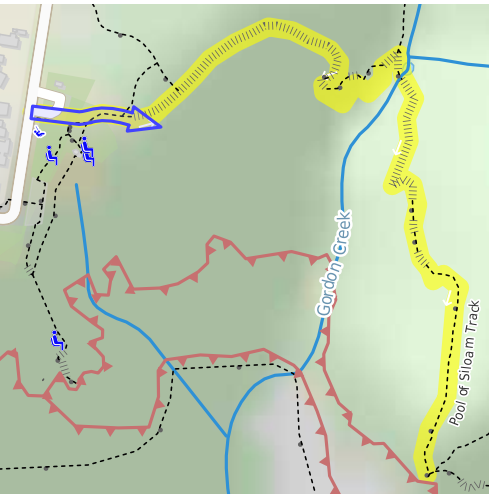
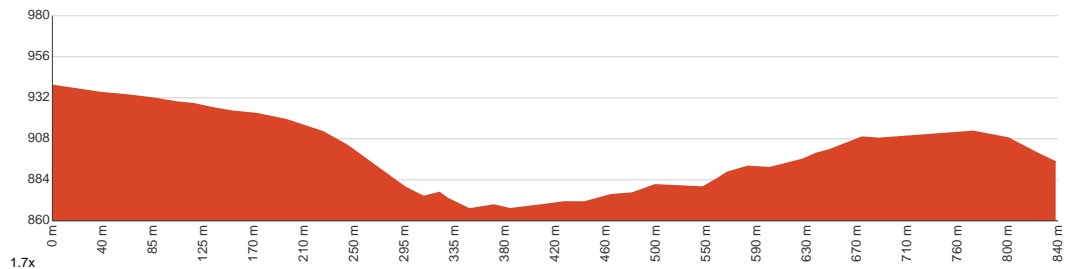

1.7 km
Return


↑ 150 m
↓ 150 m


Moderate track



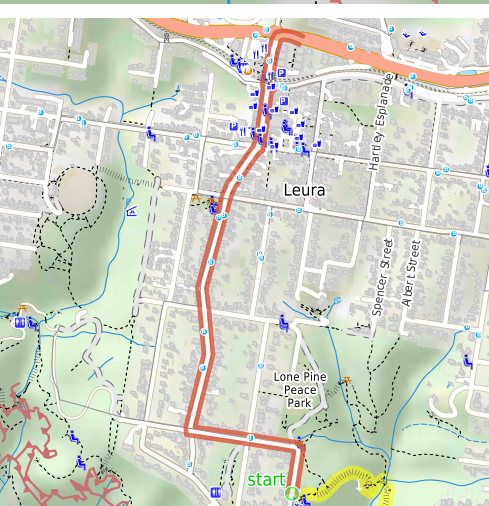
A walk with two spectacular features, the Pool of Siloam and Golf Links Lookout. A fantastic waterfall and an excellent view which really make this walk a stunning way to explore the bushland. Let us begin by acknowledging the Dharug & Gundungurra people, Traditional Custodians of the land on which we travel today, and pay our respects to their Elders past and present.



Class 3 of 6 Formed track, with some branches and other obstacles	
Quality of track	Clear and well formed track or trail (2/6)
Gradient	Short steep hills (3/6)
Signage	Directional signs along the way (3/6)
Infrastructure	Generally useful facilities (such as fenced cliffs and seats) (1/6)
Experience Required	No experience required (1/6)
Weather	Storms may impact on navigation and safety (3/6)

Getting to the start: From Alexandra Terrace

- Turn on to Leura Mall, BMD then drive for 165 m
- At roundabout, take exit 2 onto Leura Mall, BMD and drive for another 215 m
- At roundabout, take exit 2 onto Leura Mall, BMD and drive for another 1 km
- Turn left onto Gordon Road and drive for another 520 m



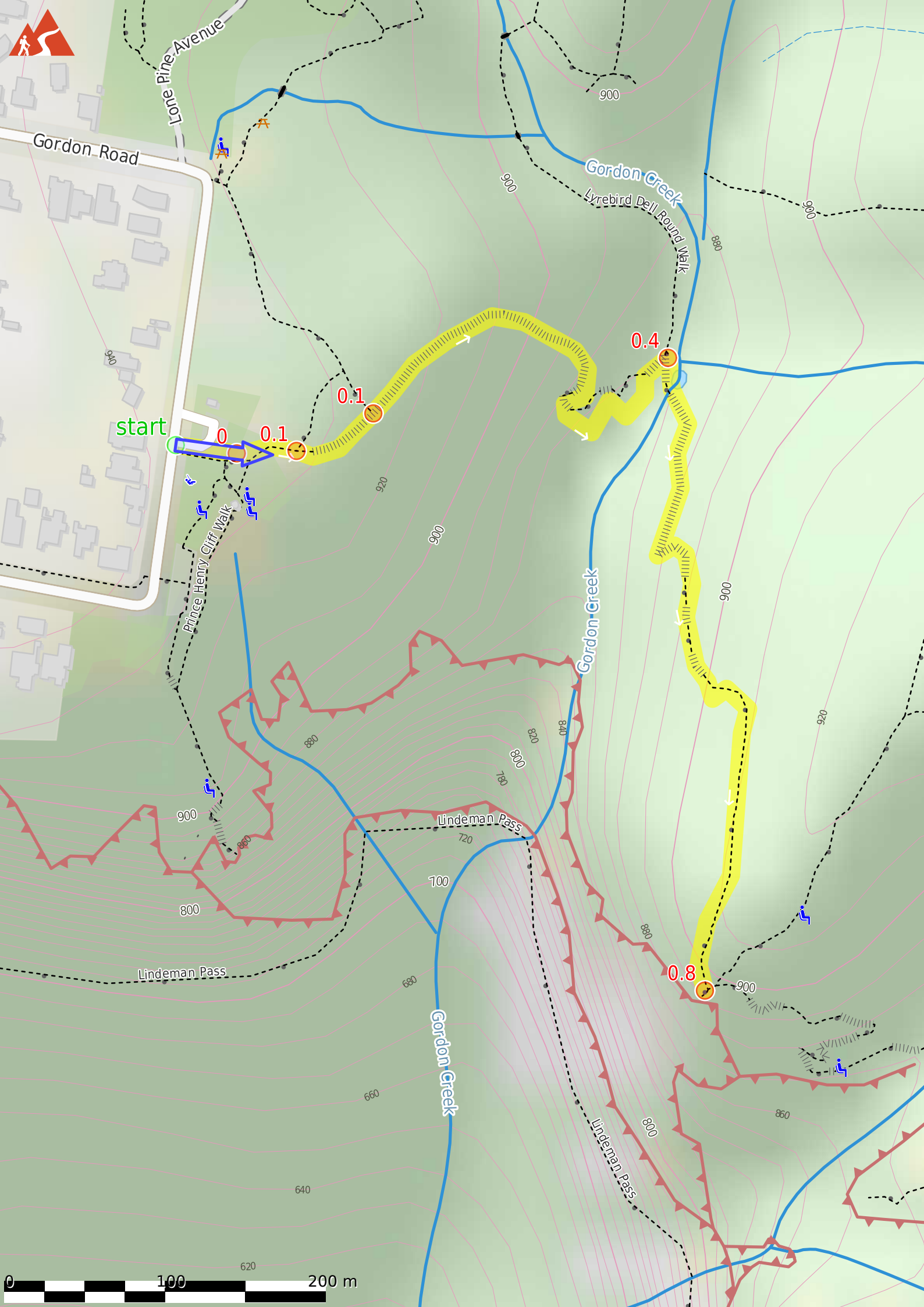
Before you start any journey ensure you;

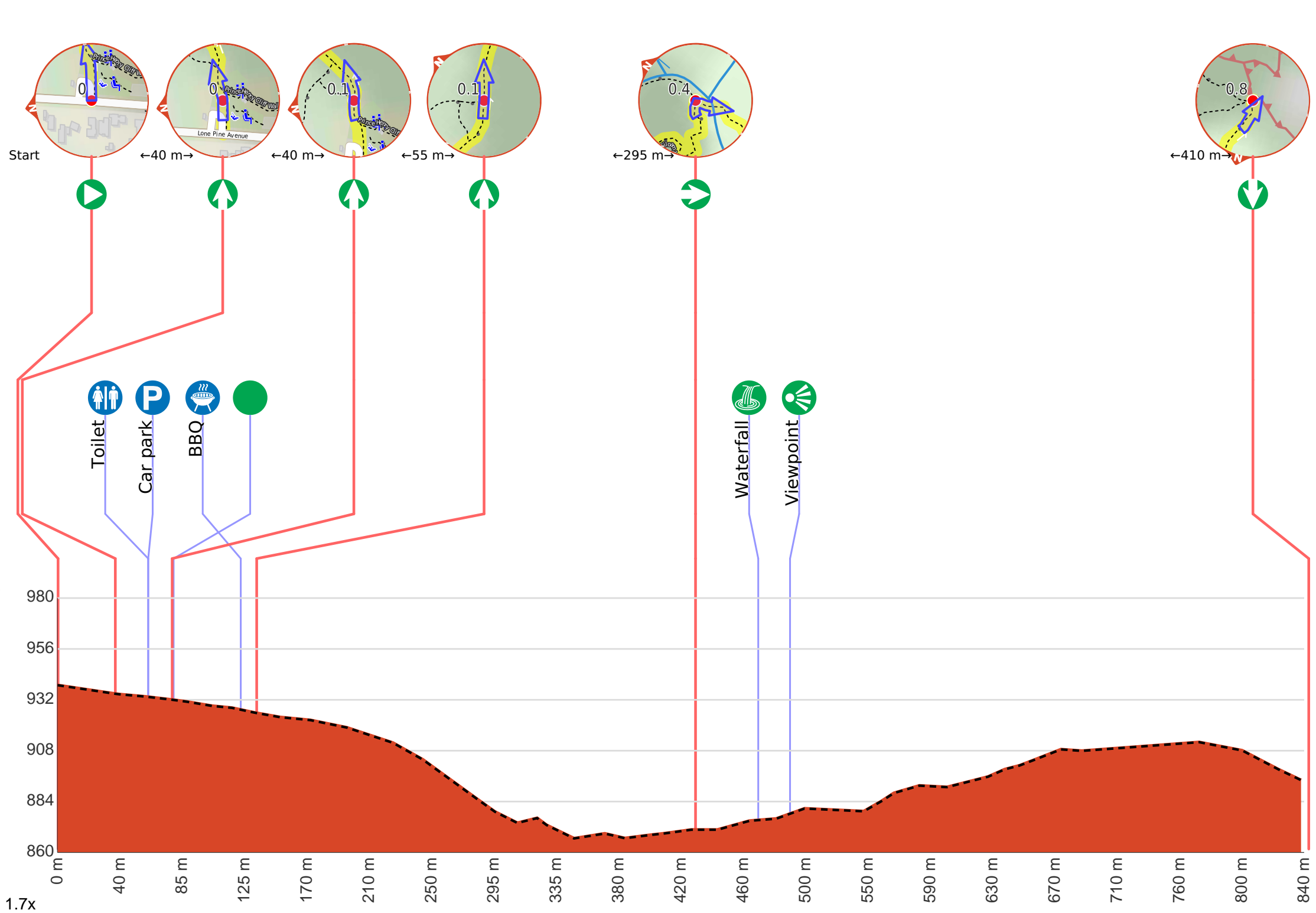
- Tell someone you trust where you are going and what to do if you are late returning
- Have adequate equipment, supplies, skills & knowledge to undertake this journey safely
- Consider weather forecasts, park/track closures & fire dangers
- Can respond to emergencies & call for help at any point
- Are healthy and fit enough for this journey

If not, change plans and stay safe. It is okay to delay and ask people for help.

Share
[Bushwalk.com](https://bushwalk.com/j/QUWWMS)
[/j/QUWWMS](https://bushwalk.com/j/QUWWMS)

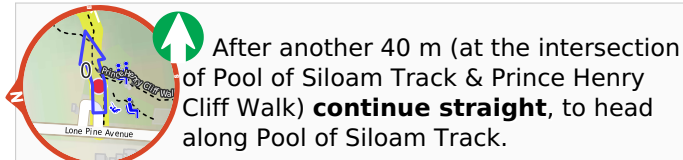
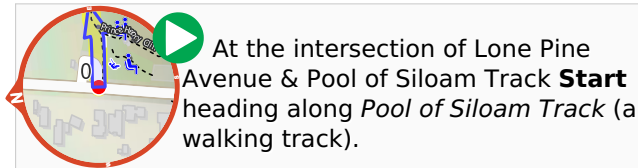






Getting started: From the lower side of Gordon Falls Reserve, this walk follows the 'Pool of Siloam' track sign into the bush, down the gentle hill (passing a track on the left). The walk passes some interesting information signs on local flora and fauna as the track becomes steeper. Continuing down the stairs, the track leads to a rock wall and a handrail. The walk heads along the base of this cliff, under a small waterfall and comes to a three-way intersection (with signposts down to the right and on the other side).

From the intersection, this walk follow the 'Pool of Siloam' sign down the steps. The track passes under a small overhang then crosses Gordon Creek on a footbridge in front of the lovely falls and the Pool of Siloam.



After another 20 m pass the toilet (30 m on your left).

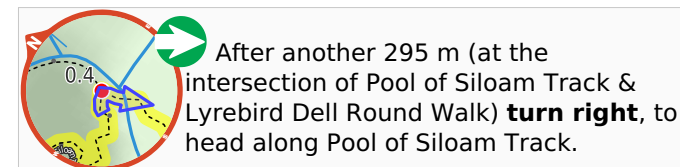
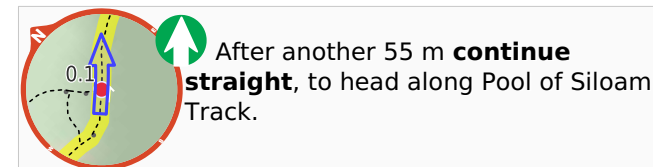
Then pass the car park (10 m on your left).

After another 60 m to find the BBQ.

Then find the "Gorden Falls Reserve" (25 m on your right).



Gordon Falls Reserve is just off Lone Pine Ave near the intersection with Olympian Pde, Leura. The park has car parking, electric BBQ's, toilets, garbage disposal, children's play equipment, picnic tables and bench seats. The park has plenty of open area and some shaded spots. There are a number of artificial cave shelters, with picnic tables inside.

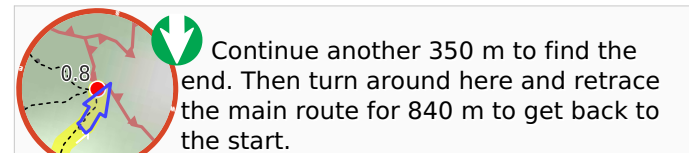


After another 40 m find the "Pool of Siloam" (15 m on your left).



The Pool of Siloam is a lovely waterhole and waterfall on Gordon Creek in the Blue Mountains National Park. This waterfall is surrounded by a moss and fern filled gully with sandstone cliffs around the edges. There is a sandstone overhang next to the waterfall. The shallow sandy pool is a lovely cool place, a great spot to stop for a snack. The track crosses the creek using a bridge in front of the waterfall. The pool derives its name from the 'Pool of Siloam' (Birkhat Hashiloah - Hebrew) in the City of David and in the Bible is where Jesus sends a man to heal him of his blindness.

After another 20 m come to the "Pool of Siloam" (on your left).



"Golf Links Lookout".



Golf Links Lookout is a fenced and signposted lookout in the Blue Mountains National Park, near Gladstone Rd Leura. The lookout has great views across the Jamison Valley to the *back* of the Three Sisters. To the left there is a good view along Narrow Neck and to Mount Solitary. There is no view of the nearby Gordon Falls.