







Black Mountain Peninsula Circuit

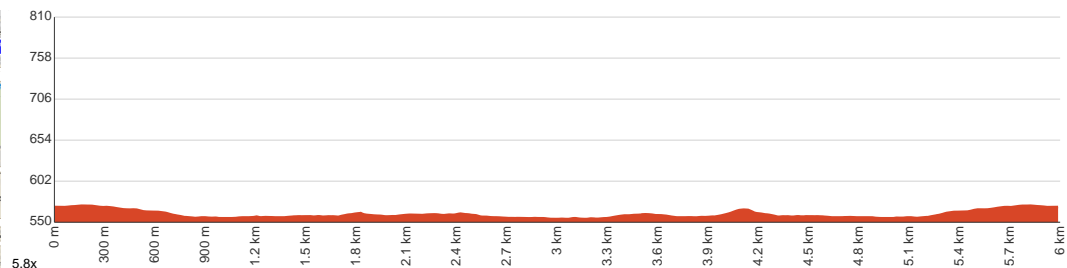
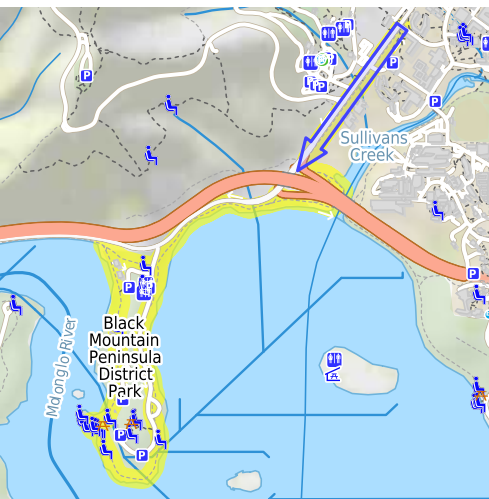
-  1 h 30 min to 2 h 30 min
-  30 min to 1 h 15 min
-  1 h 15 min to 3 h 15 min


6 km
Circuit


↑ 54 m
↓ 54 m


Easy track

Starting from the intersection of Clunies Ross Street and Dickson Road, Acton, this walk gives you a tour of Black Mountain Peninsula District Park via a concrete footpath all the way through, then loops back. Literally in the heart of Canberra, this walk is a great way to get to know the city better, whilst enjoying the scenic lakeside of Burley Griffin. Pass by the Sullivans Creek on your way and feel the refreshing breeze early on. There's a lot you can do when you're at the peninsula, from having a peaceful picnic with your family to going crazy on the inflatable slides of Canberra Aqua Park. You can also birdwatch, as there are many species flying above and residing in the area. Red Wattlebirds and White-plumed Honeyeaters are some of them, along with the iconic Black Swan every now and then. Unfortunately, your dog can't enjoy this journey with you. Let us begin by acknowledging the Traditional Custodians of the land on which we travel today, and pay our respects to their Elders past and present.



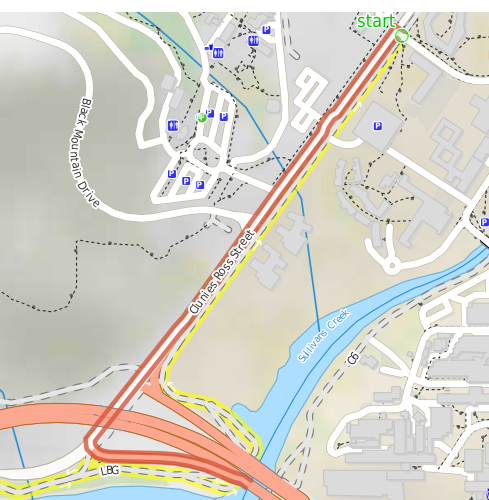
Class 2 of 6

Clear and well formed track or trail

| | |
|---------------------|---|
| Quality of track | Smooth and hardened path (1/6) |
| Gradient | Flat, no steps (1/6) |
| Signage | Clearly signposted (2/6) |
| Infrastructure | Generally useful facilities (such as fenced cliffs and seats) (1/6) |
| Experience Required | No experience required (1/6) |
| Weather | Weather generally has little impact on safety (2/6) |

Getting to the start: From Parkes Way

- Turn on to Clunies Ross Street Offramp then drive for 260 m
- Turn slight right onto Clunies Ross Street Offramp and drive for another 10 m
- Turn right onto Clunies Ross Street and drive for another 840 m
- Turn right onto Dickson Road and drive for another 10 m



Before you start any journey ensure you;

- Tell someone you trust where you are going and what to do if you are late returning
- Have adequate equipment, supplies, skills & knowledge to undertake this journey safely
- Consider weather forecasts, park/track closures & fire dangers
- Can respond to emergencies & call for help at any point
- Are healthy and fit enough for this journey

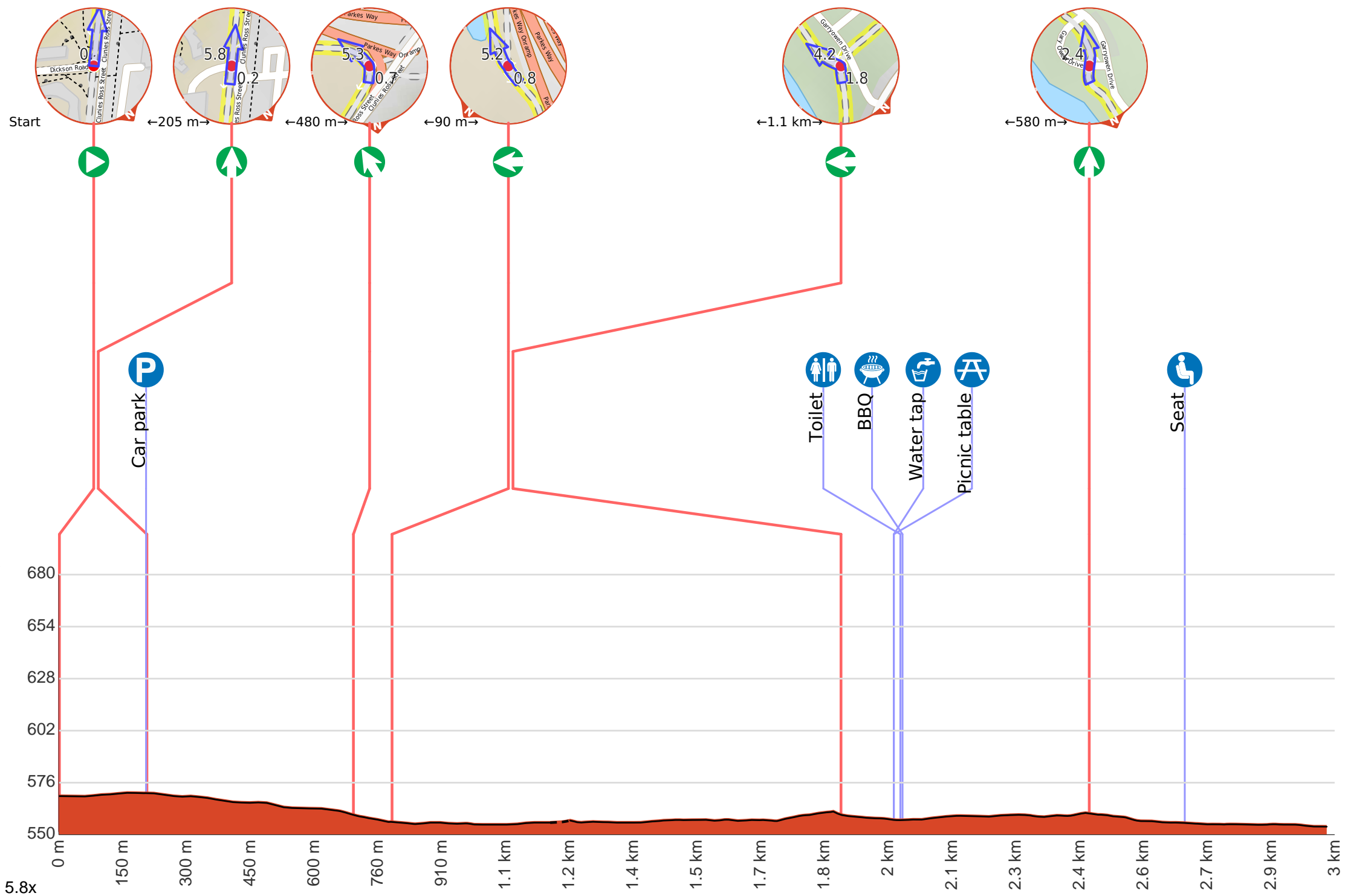
If not, change plans and stay safe. It is okay to delay and ask people for help.

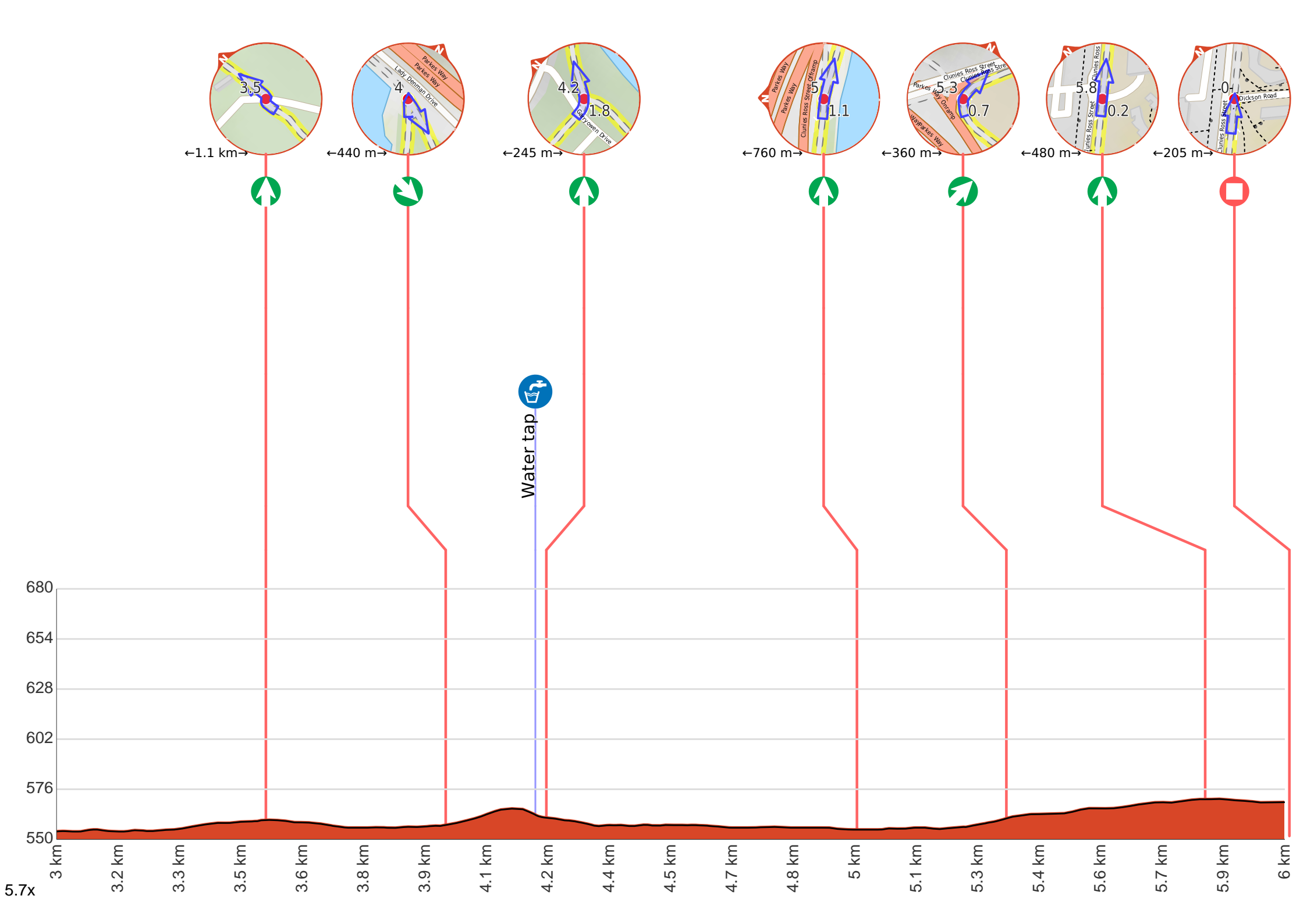
Share

[Bushwalk.com](https://bushwalk.com/j/PWP6XX)
[/j/PWP6XX](https://bushwalk.com/j/PWP6XX)

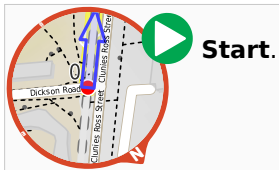






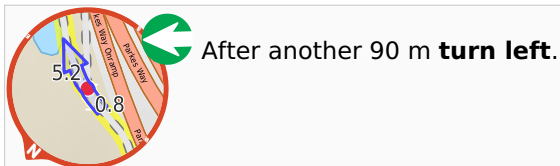
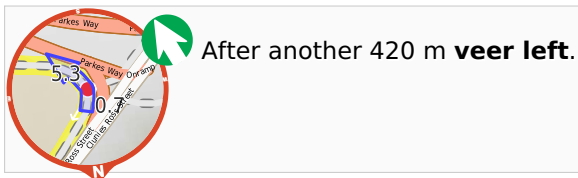


Getting started: From the intersection of Clunies Ross Street and Dickson Road, head along the concrete footpath parallel to Clunies Ross Street, moving directly away from the Australian National University sign. After about 200 metres from the start point you'll pass by the entrance of Dickson Precinct Parking Station to your left. Stay on the concrete track and keep moving straight towards the lake to continue along Black Mountain Peninsula Circuit.



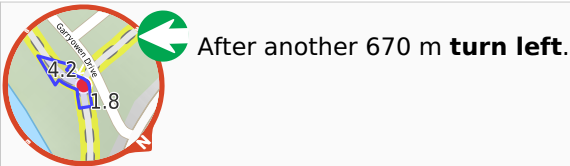
P Then pass the car park (70 m on your left).

↑ After another 70 m **continue straight**.



↑ After another 275 m **continue straight**.

↑ After another 110 m **continue straight**. Keep left.



♂ ♀ After another 140 m pass the toilet (50 m on your right).

BBQ After another 5 m pass the BBQ (50 m on your right).

Water Tap Then pass the water tap (45 m on your right).

Picnic Table Then pass the picnic table (45 m on your right).



↑ After another 65 m **continue straight**.

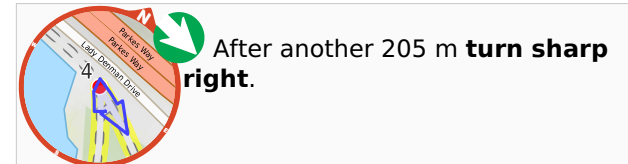
Seat After another 160 m pass a seat (on your left).

Picnic Table After another 450 m pass the picnic table (20 m on your right).

BBQ After another 130 m pass the BBQ (30 m on your right).



↑ After another 235 m **continue straight**.



Water Tap After another 220 m pass the water tap (on your right).



↑ After another 570 m **continue straight**.

