



Crystal Cascades to Kennedy Highway



5 h 30 min to 9 h



2 h 45 min to 4 h 30 min



22.5 km
One way

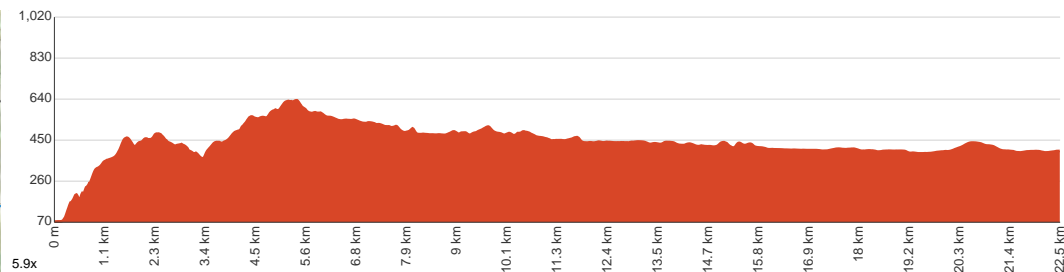
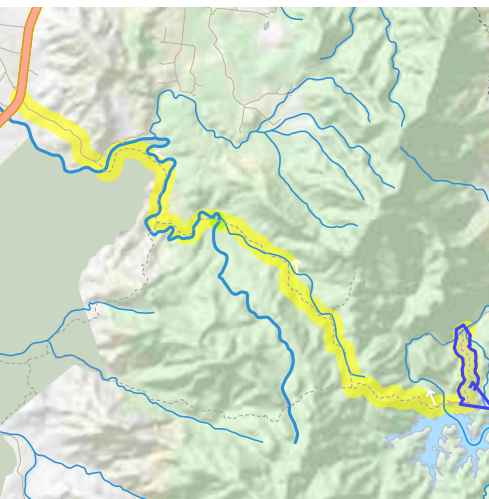


↑ 1089 m
↓ 761 m



Hard track

Starting from the end of Redlynch Intake Road, Redlynch, this walk explores the woodlands of Dinden National Park as it meanders along Clohesy River, visiting Copperlode Dam and Clohesy Fig Tree along the way. Embark on a lengthy journey that's going to test your endurance whilst rewarding you with panoramic views, lovely little birds and the peaceful feeling of remoteness. Regardless if you're on a bike, running or taking your time; this trip is going to be a good experience (considering you have the required amount of fitness and navigational skills). The picnic area near the dam offers truly exceptional views over Lake Morris and can be a great place to pause and rest. Another place to stop would be the Clohesy Fig Tree, where there's a boardwalk taking you to the humongous tree. Notice the change in vegetation as you make your way through the woodland. Let us begin by acknowledging the Traditional Custodians of the land on which we travel today, and pay our respects to their Elders past and present.



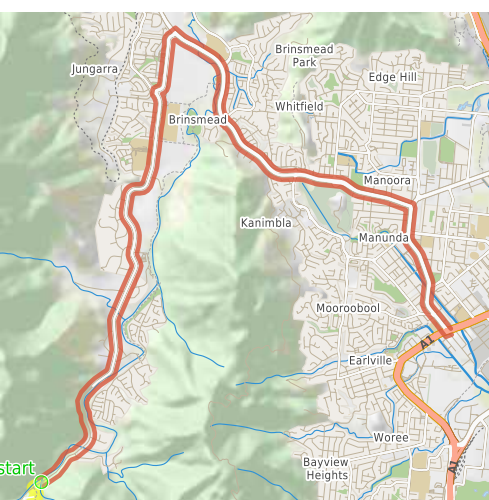
Class 4 of 6

Rough track, where fallen trees and other obstacles are likely

Quality of track	Clear and well formed track or trail (2/6)
Gradient	Very steep (4/6)
Signage	Minimal directional signs (4/6)
Infrastructure	Limited facilities, not all cliffs are fenced (3/6)
Experience Required	Moderate level of bushwalking experience recommended (4/6)
Weather	Storms may impact on navigation and safety (3/6)

Getting to the start: From Mulgrave Road, A1

- Turn on to McCoombe Street, 91 then drive for 2.4 km
- Keep left onto Pease Street, 91 and drive for another 5.8 km
- Turn left onto Redlynch Connection Road and drive for another 1.2 km
- At roundabout, take exit 1 onto Redlynch Intake Road and drive for another 7.9 km



Before you start any journey ensure you;

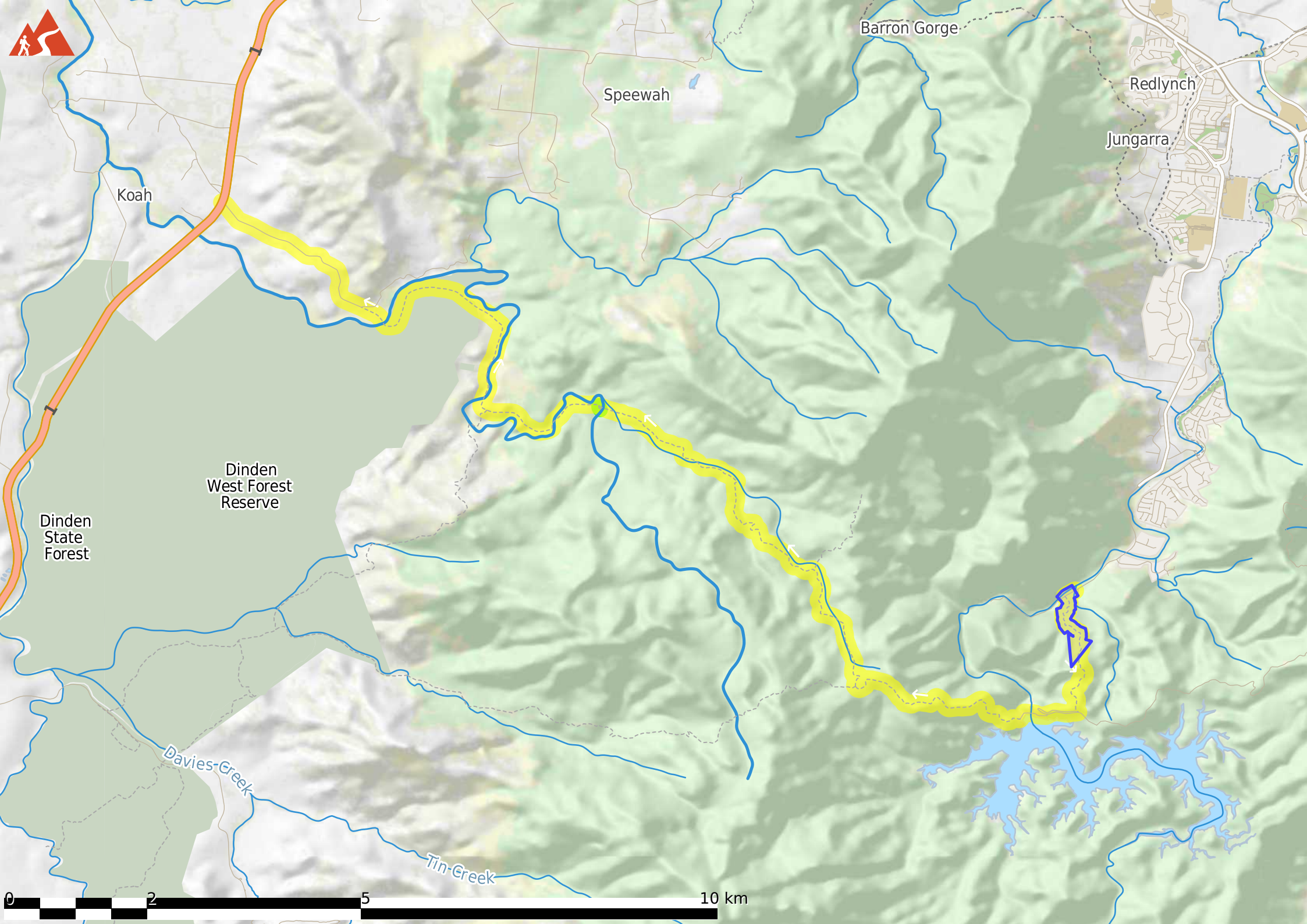
- Tell someone you trust where you are going and what to do if you are late returning
- Have adequate equipment, supplies, skills & knowledge to undertake this journey safely
- Consider weather forecasts, park/track closures & fire dangers
- Can respond to emergencies & call for help at any point
- Are healthy and fit enough for this journey

If not, change plans and stay safe. It is okay to delay and ask people for help.

Share

[Bushwalk.com](https://bushwalk.com/j/OZ2UIQ)
[/j/OZ2UIQ](https://bushwalk.com/j/OZ2UIQ)





Barron Gorge

Speewah

Redlynch

Jungarra

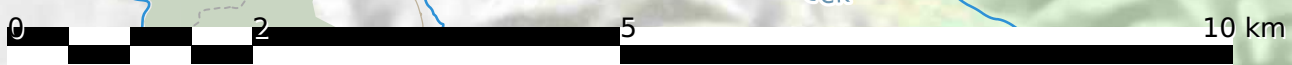
Koah

Dinden
West Forest
Reserve

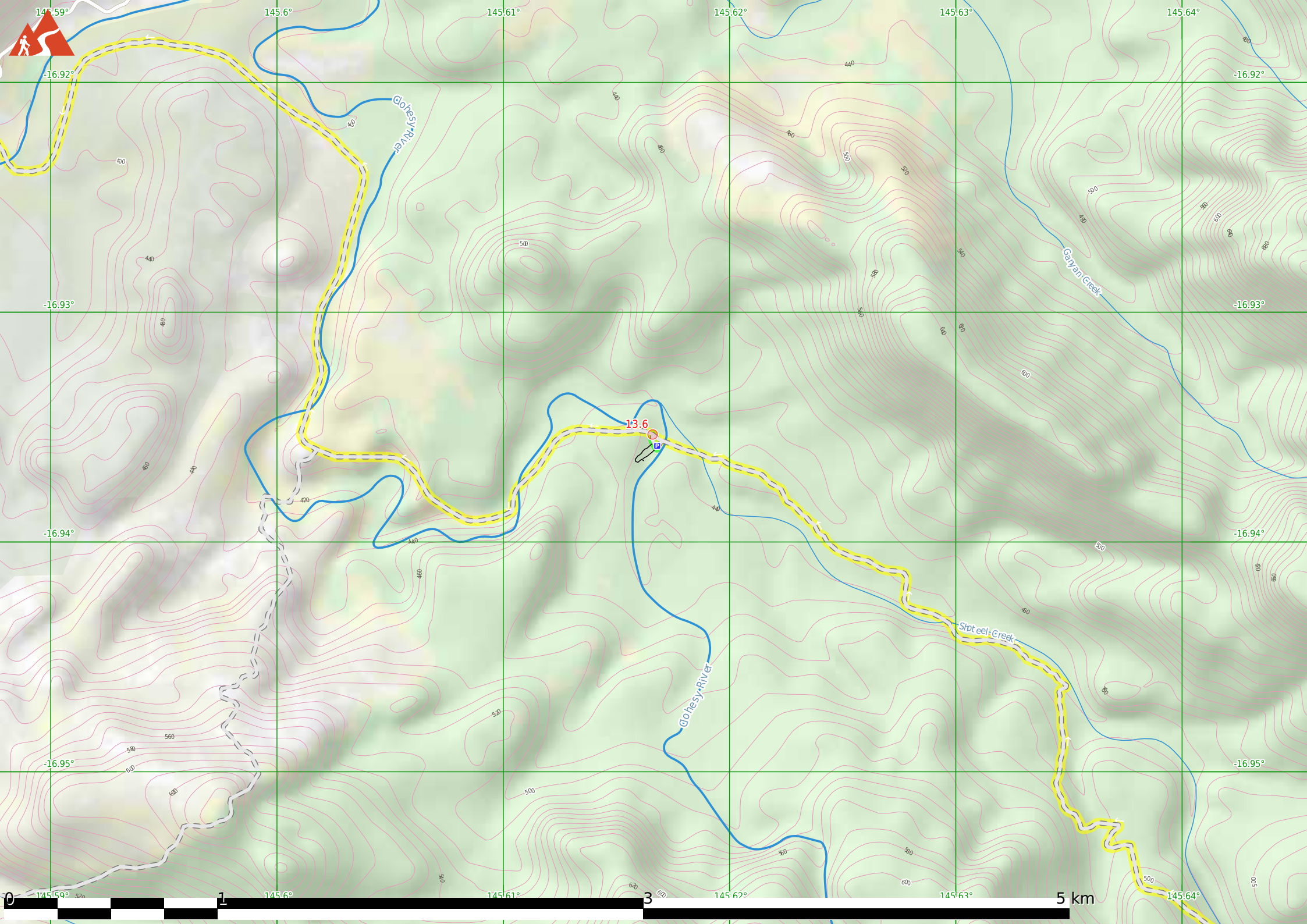
Dinden
State
Forest

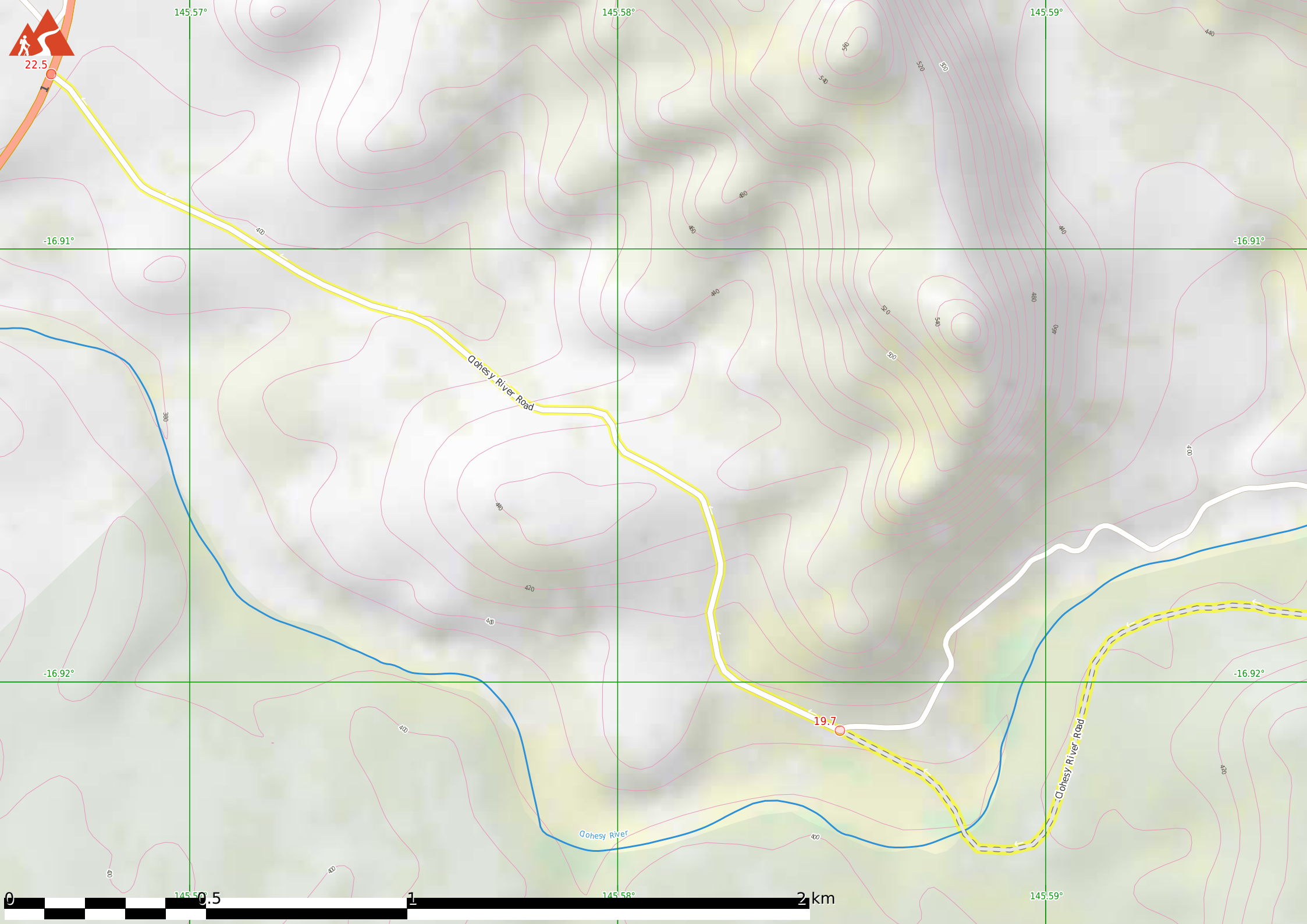
Davies-Creek

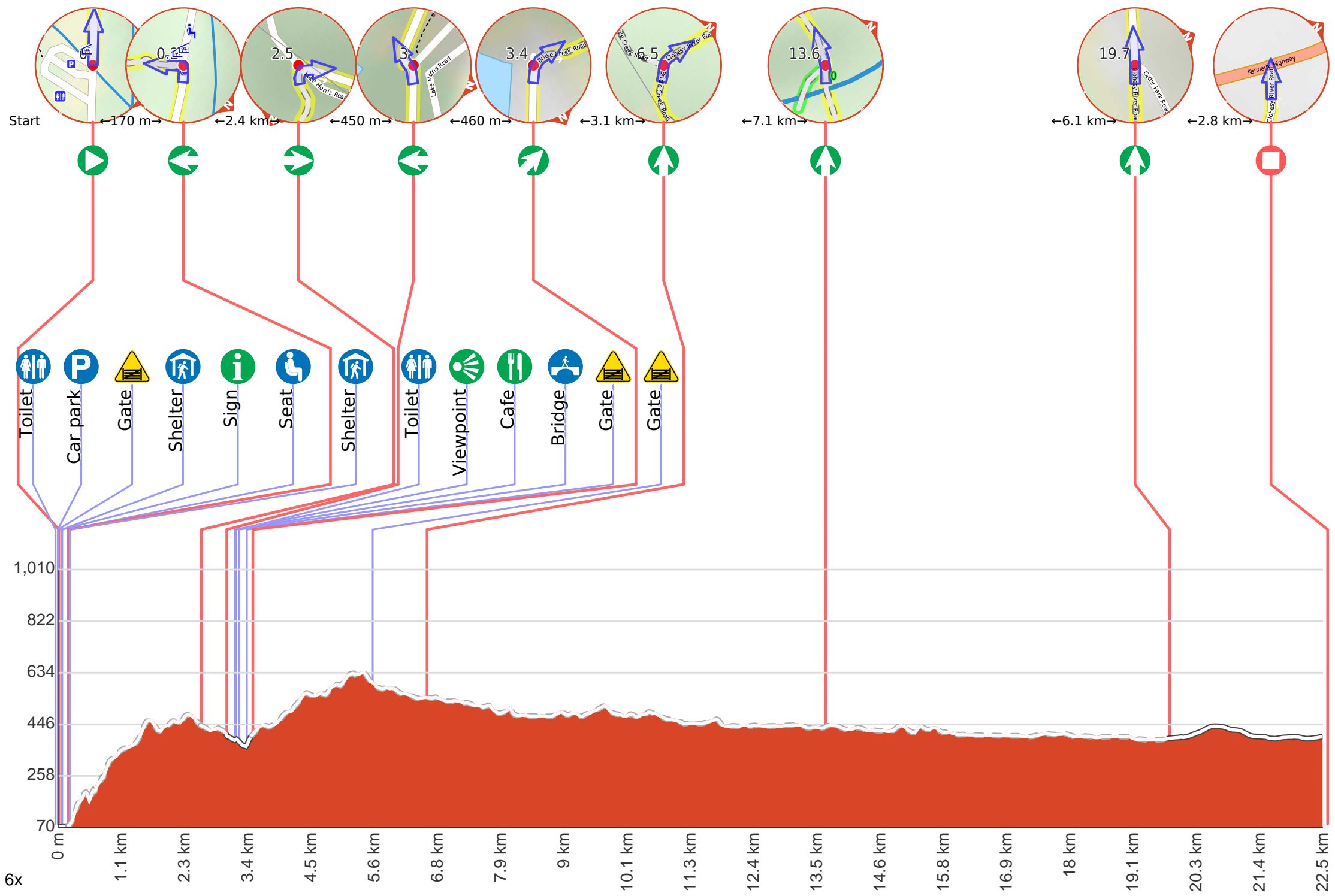
Tin-Creek



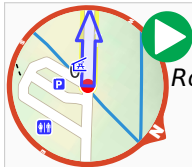








Getting started: From the Crystal Cascades car park at the end of Redlynch Intake Road, head towards the picnic area along the dirt track as you pass by informative signposts to your left, moving directly away from the road. 165 metres in, make a perpendicular left turn at the 3-way intersection near the picnic tables to continue along Crystal Cascades to Kennedy Highway Track.



Start heading along *Redlynch Intake Road*.



There is a toilet (about 60 m back from the start).



Find the car park at the start.



Find the gate at the start.



Find the shelter at the start.



Find the Crystal Cascades at the start.



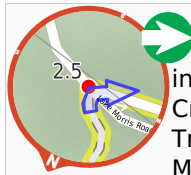
After another 115 m pass a seat (on your right).



Turn left, to head along Crystal Cascades - Copperlode Dam Track.



After another 20 m pass the shelter (30 m on your right).



After another 2.3 km (at the intersection of Lake Morris Road & Crystal Cascades - Copperlode Dam Track) **turn right**, to head along Lake Morris Road (a vehicle track).



After another 450 m (at the intersection of Lake Morris Road & Bridle Creek Road) **turn left**, to head along Bridle Creek Road (a service road).



After another 225 m pass the toilet (60 m on your right).



Then come to the viewpoint (40 m on your right).



After another 20 m pass the cafe (45 m on your right).



After another 55 m cross the bridge (about 80 m long)



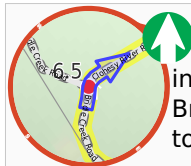
After another 60 m head through/around the gate.



After another 105 m **veer right**, to head along Bridle Creek Road.

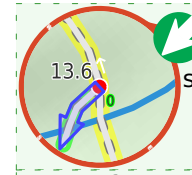


After another 2.1 km head through/around the gate.



After another 960 m (at the intersection of Clohesy River Road & Bridle Creek Road) **continue straight**, to head along Clohesy River Road.

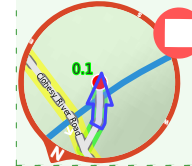
Start of an optional side trip: This little side trip takes you to the Clohesy Fig Tree.



To start this optional side trip turn sharp left here. **Start**.



After another 70 m come to "Clohesy Fig Tree". After a straightforward 300-metre boardwalk, you'll be met by a stunningly big, ancient fig tree.



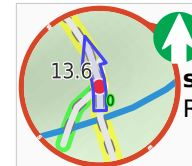
The end.



Turn around and retrace your steps back the 70 m to the main route.



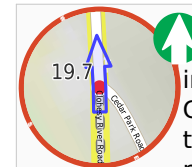
Back at the main route veer left and follow on from the 13.6 km waypoint.



After another 7.1 km **continue straight**, to head along Clohesy River Road.



After another 1.9 km **continue straight**, to head along Clohesy River Road.



After another 4.2 km (at the intersection of Cedar Park Road & Clohesy River Road) **continue straight**, to head along Clohesy River Road (a residential road).



After another 2.8 km come to the end.