



# Kanning Cave Walk

(Darkinjung & Guringai Country)

20 min to 40 min

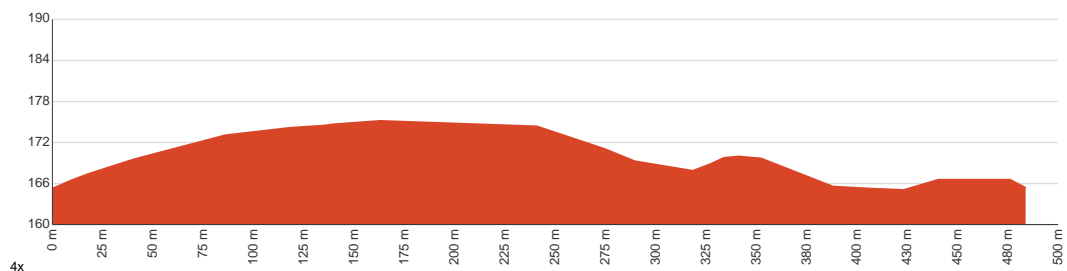
970 m  
Return

↑ 27 m  
↓ 27 m

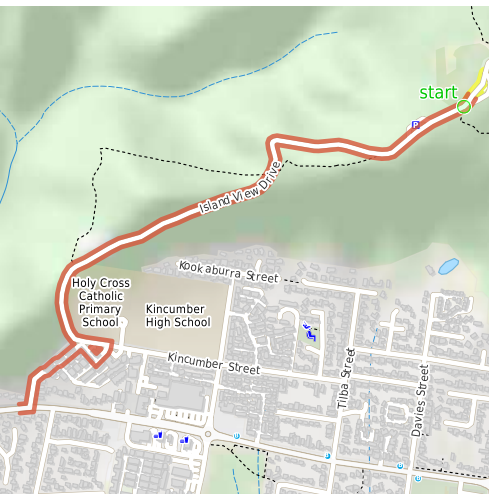
2  
Easy track



This short walk follows a clear track to a large sandstone cave on the Kanning Walk. From the Honeman's Picnic Area, follow Kanning Walk through the bush and along the side of a long rock wall. There are several caves along the way, the main one being quiet large and tucked behind some large boulders. The cave provides a cool spot on hot days. After admiring the cave, walk back the same way, passing some large angophora trees. Let us begin by acknowledging the Darkinjung & Guringai people, Traditional Custodians of the land on which we travel today, and pay our respects to their Elders past and present.



Class 2 of 6 Clear and well formed track or trail	
<b>Quality of track</b>	Clear and well formed track or trail (2/6)
<b>Gradient</b>	Gentle hills with occasional steps (2/6)
<b>Signage</b>	Clearly signposted (1/6)
<b>Infrastructure</b>	Generally useful facilities (such as fenced cliffs and seats) (1/6)
<b>Experience Required</b>	No experience required (1/6)
<b>Weather</b>	Weather generally has little impact on safety (1/6)



**Getting to the start:** From Avoca Drive

- Turn on to Island View Drive then drive for 180 m
- Turn slight left onto Panorama Parade and drive for another 145 m
- Turn left onto Waterford Boulevard and drive for another 55 m
- Turn left onto Kincumber Street and drive for another 1.7 km

**Before you start any journey ensure you;**

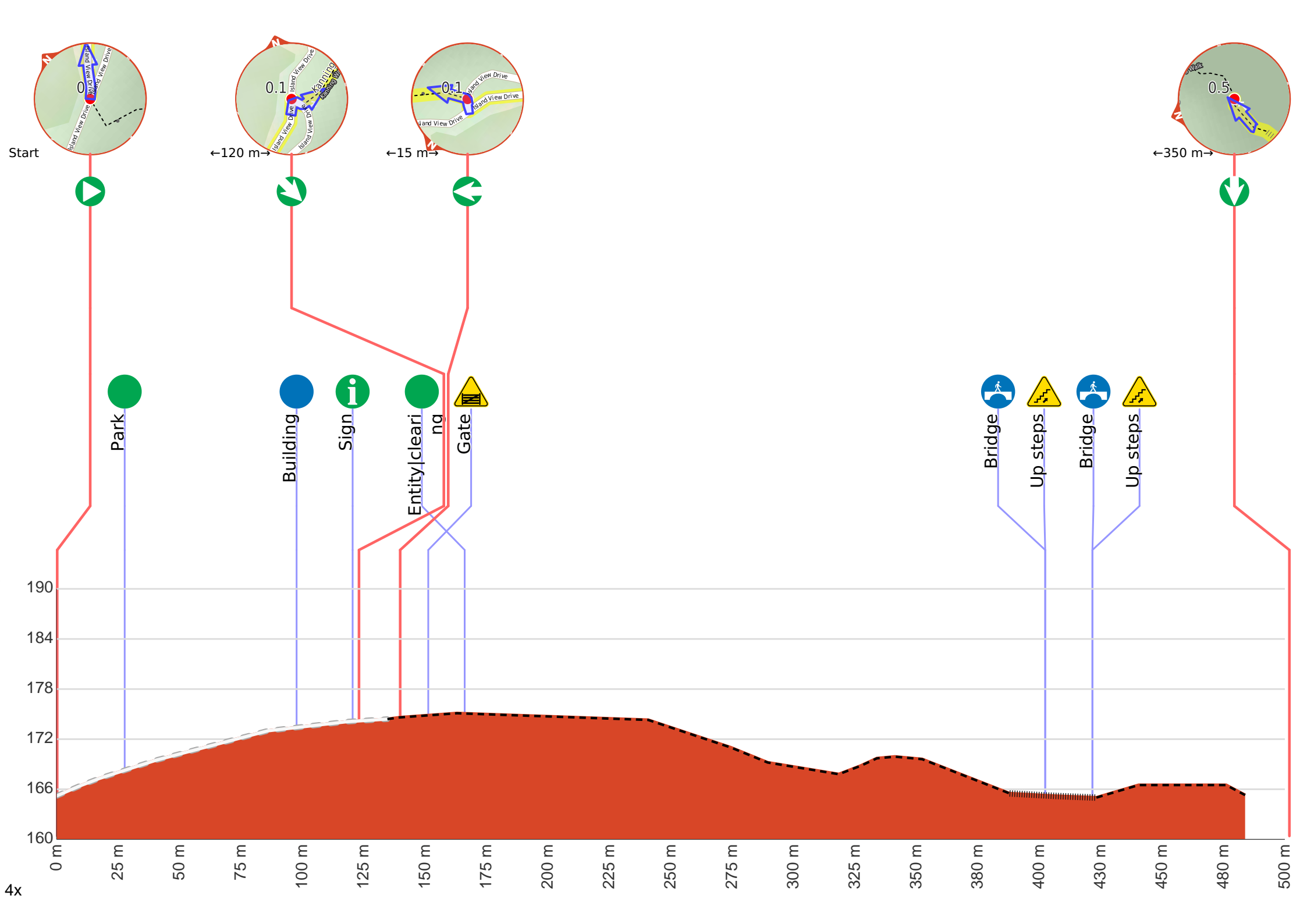
- Tell someone you trust where you are going and what to do if you are late returning
- Have adequate equipment, supplies, skills & knowledge to undertake this journey safely
- Consider weather forecasts, park/track closures & fire dangers
- Can respond to emergencies & call for help at any point
- Are healthy and fit enough for this journey

If not, change plans and stay safe. It is okay to delay and ask people for help.

Share  
Bushwalk.com  
/j/41FNN







**Getting started:** From the car park, this walk heads up the road, initially keeping the mud brick building to the left. Soon the road leads to an intersection (next to an information board and fence on the left). From the intersection, this walk follows the 'One Way' road sign away from the picnic area and along the road. Almost immediately, there is a locked gate and the 'Kanning Walk' sign (on the left).



**Start** heading along *Island View Drive*.

Find the park at the start.

After another 70 m find the "Mud Brick Building" (10 m on your left).



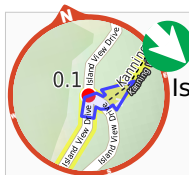
The mud brick building is a landmark in the main picnic area at Kincumber Mountain, and is a popular spot to gather. Also known as 'Kincumber Mountain Information Centre', 'The Kiosk', 'Kincumber Kiosk' and 'Kincumber Mountain Kiosk', the building was constructed in 1986 with funding from Community Employment Programme. The building is generally locked but can be booked through the local Lions Club for special events. The building has a rain water tank, small kitchen and one main large room. The verandah also provides good shelter.

After another 20 m pass the "Kincumber Mountain Kiosk" (30 m on your left).

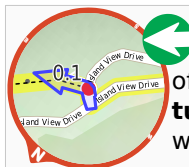
After another 45 m find the "Honeman's Rock picnic area" (45 m on your left).



Honeman's Rock picnic area is a large picnic area at the top end of Island View Drive. This picnic area has a couple of large grassy areas, composting toilets, free electric BBQs, picnic tables, shelters, garbage bins, drinking water and information signs. The picnic area is home to a mud brick building (available for hire) and Honeman's Rock, from which the area derives its name. There is a fair amount of parking available next the picnic area, and some extra spaces a few hundred meters down the road.



**Turn sharp right**, to head along *Island View Drive*.



After another 15 m (at the intersection of *Island View Drive* & *Kanning Walk*) **turn left**, to head along *Kanning Walk* (a walking track).

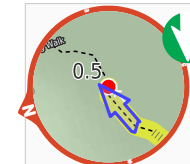
After another 10 m head through/around the gate.

After another 240 m cross the bridge (about 35 m long)

Then head up the 12 metal steps (about 35 m long)

Then cross the bridge (about 15 m long)

Then head up the 12 metal steps (about 15 m long)



Continue another 60 m to find the end. Then turn around here and retrace the main route for 480 m to get back to the start.



About 10 m past the end is "Kanning Walk Cave".



The main cave on Kanning Walk is surprising large for a sandstone environment. The cave has two main sections. There is a large cabin about 7m wide and 9m deep. A small tunnel extends about 10m further to a small chamber at the back. The entrance to the cave is behind two large boulders, providing extra shelter. It is believed that A. A. Glasson lived in the cave in the early 1930's, which was not uncommon during the depression. The cave has proved to be a great place to rest on hot days.