



Gordon Falls Lookout Walk

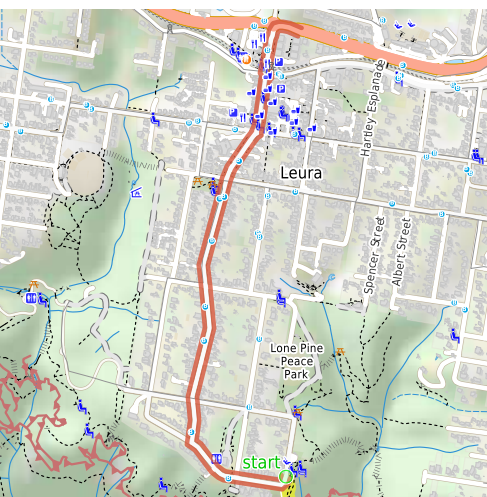
(Dharug & Gundungurra Country)

 10 min to 15 min

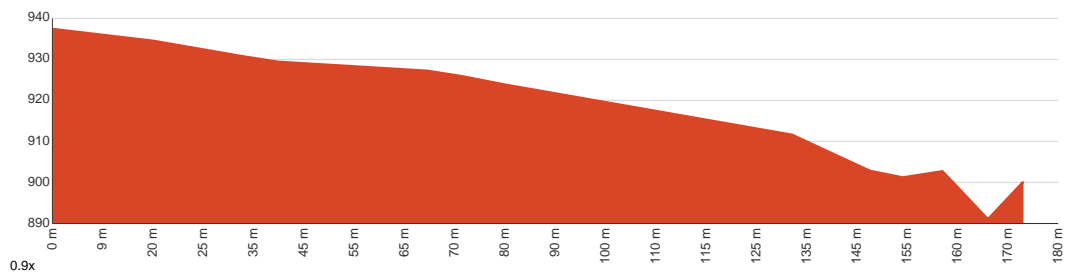

350 m
Return


↑ 59 m
↓ 59 m


Moderate track



This short, pleasant bushwalk from Leura leads to the Gordon Falls Lookout. As the name suggests, there are view of Gordon Falls, as well as a great view along the escarpment to Sublime Point, across to Mount Solitary and over to the Three Sisters. Let us begin by acknowledging the Dharug & Gundungurra people, Traditional Custodians of the land on which we travel today, and pay our respects to their Elders past and present.



Class 3 of 6

Formed track, with some branches and other obstacles

| | |
|---------------------|---|
| Quality of track | Clear and well formed track or trail (2/6) |
| Gradient | Short steep hills (3/6) |
| Signage | Clearly signposted (1/6) |
| Infrastructure | Limited facilities, not all cliffs are fenced (3/6) |
| Experience Required | No experience required (1/6) |
| Weather | Weather generally has little impact on safety (1/6) |

Getting to the start: From Alexandra Terrace

- Turn on to Leura Mall, BMD then drive for 165 m
- At roundabout, take exit 2 onto Leura Mall, BMD and drive for another 215 m
- At roundabout, take exit 2 onto Leura Mall, BMD and drive for another 1.2 km
- Turn left onto Olympian Parade, BMD and drive for another 400 m

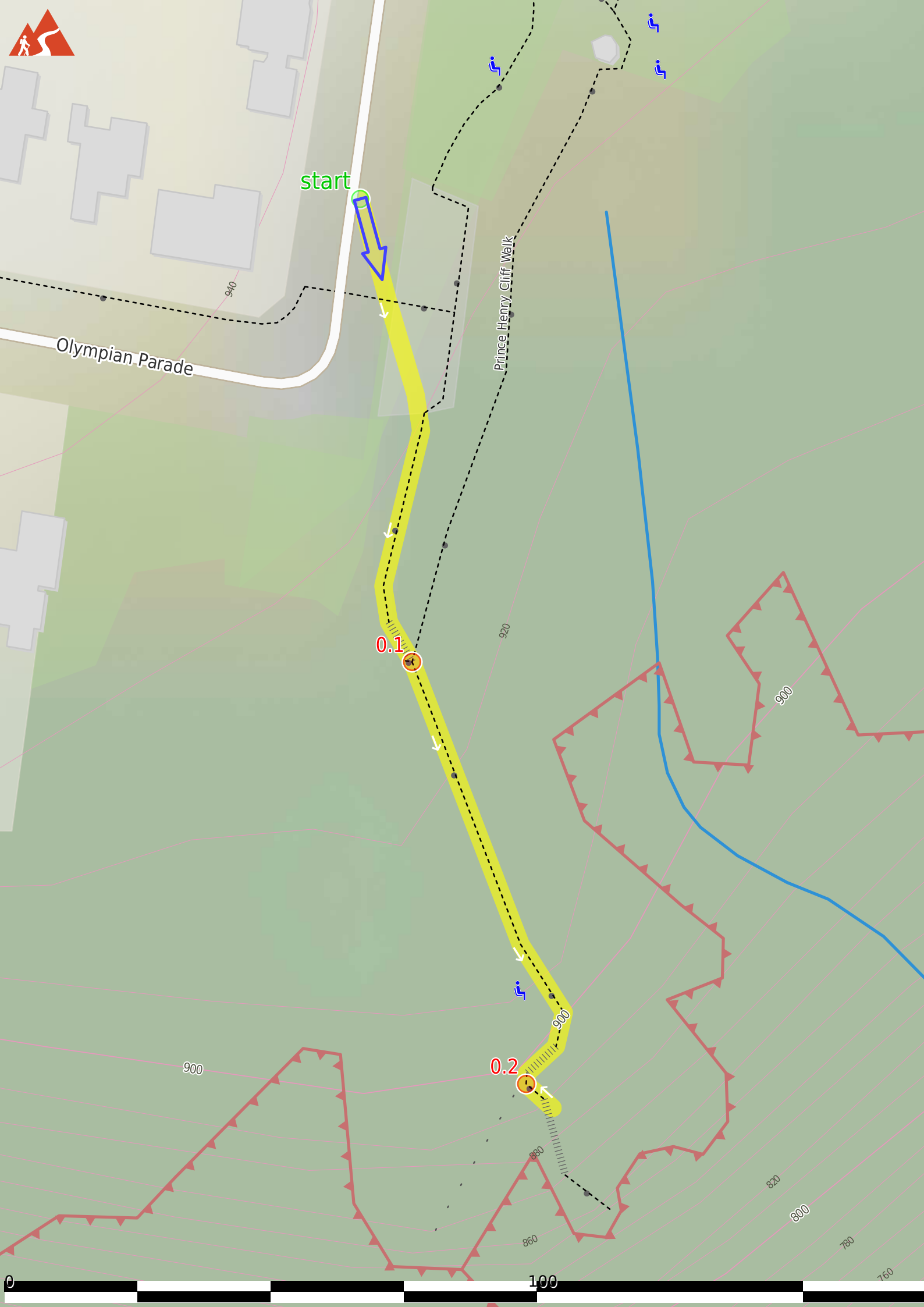
Before you start any journey ensure you;

- Tell someone you trust where you are going and what to do if you are late returning
- Have adequate equipment, supplies, skills & knowledge to undertake this journey safely
- Consider weather forecasts, park/track closures & fire dangers
- Can respond to emergencies & call for help at any point
- Are healthy and fit enough for this journey

If not, change plans and stay safe. It is okay to delay and ask people for help.

Share
[Bushwalk.com](https://bushwalk.com/j/5B5FQQ)
[j/5B5FQQ](https://bushwalk.com/j/5B5FQQ)





start

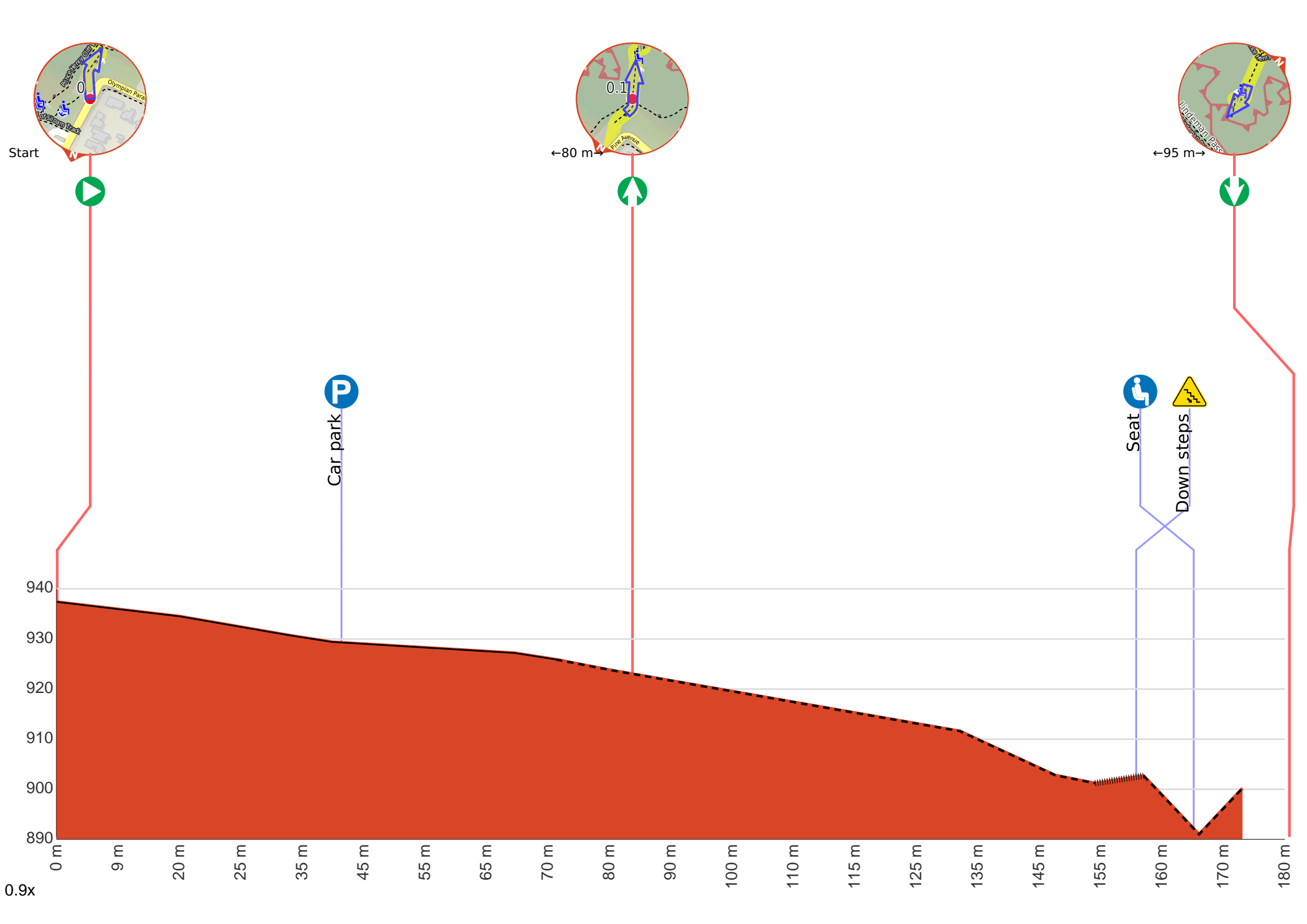
Olympian Parade

Prince Henry Cliff Walk

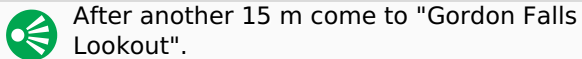
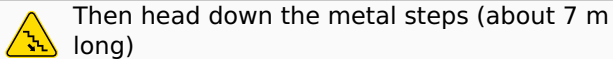
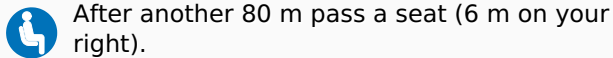
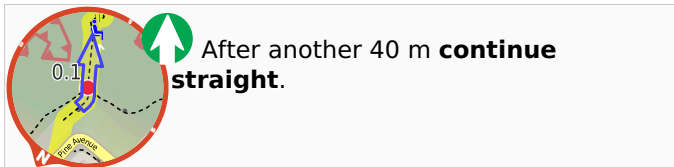
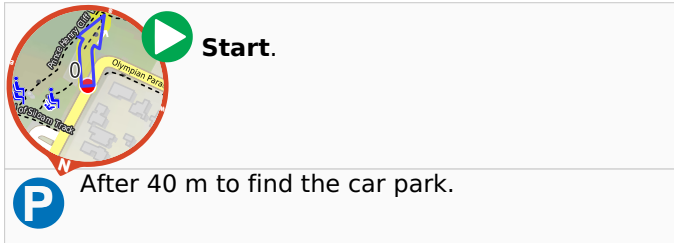
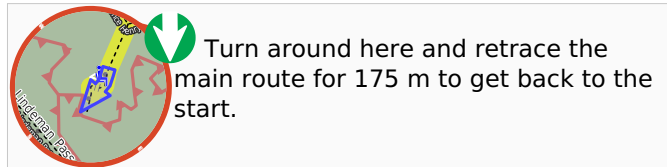
0.1

0.2





Getting started: From the corner of Olympian Pde and Lone Pine Ave, this walk heads south through the park and, at the information sign, connects to a small bush track. Heading down just a few steps, the track comes to an intersection with a bush track.



Gordon Falls Lookout is a fenced lookout near the end of Lone Pine Rd, Leura. As the name suggests, there is a good view of Gordon Falls to the left. There is also a wonderful view along the escarpment to Sublime Point. The lookout is right at the edge of the cliff and also has a great view across the Jamison Valley, out to Mount Solitary. Narrow Neck and the 'back' of the Three Sisters are visible on the right-hand side.