



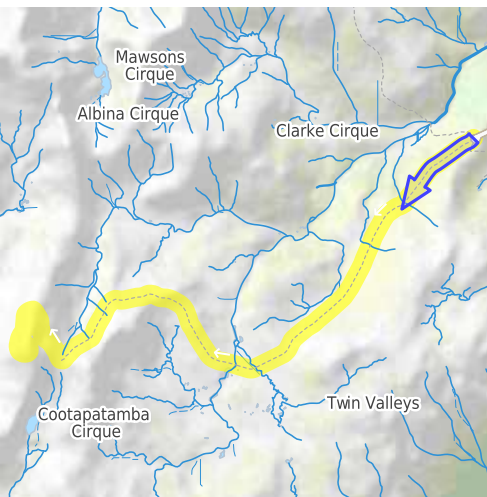
Charlotte Pass to Mount Kosciuszko - Summit Trail (Ngarigo Country)

 6 h to 7 h 30 min

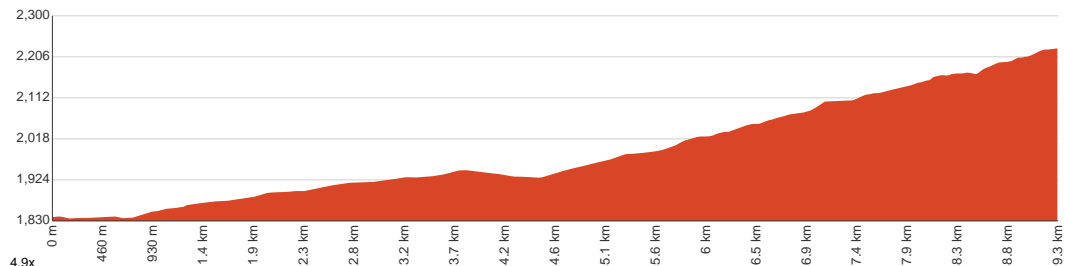

18.5 km
Return


↑ 448 m
↓ 448 m


Hard track



This popular walk starts at Charlotte Pass and follows the Old Kosciuszko Road, as it winds through the mountains, to Rawsons Pass, then continues to the top of Kosciuszko. The walk passes the well known Snowy River and Seamans Hut. From Rawsons Pass it is a fairly short walk up the footpath to Mt Kosciuszko's peak. On a clear day the views span all the way to the horizon in every direction from the highest spot in Australia. Let us begin by acknowledging the Ngarigo people, Traditional Custodians of the land on which we travel today, and pay our respects to their Elders past and present.



Class 4 of 6

Rough track, where fallen trees and other obstacles are likely

Quality of track	Clear and well formed track or trail (2/6)
Gradient	Short steep hills (3/6)
Signage	Clearly signposted (1/6)
Infrastructure	Generally useful facilities (such as fenced cliffs and seats) (1/6)
Experience Required	No experience required (1/6)
Weather	Foretasted & unexpected storms and severe weather may impact on navigation and safety (4/6)

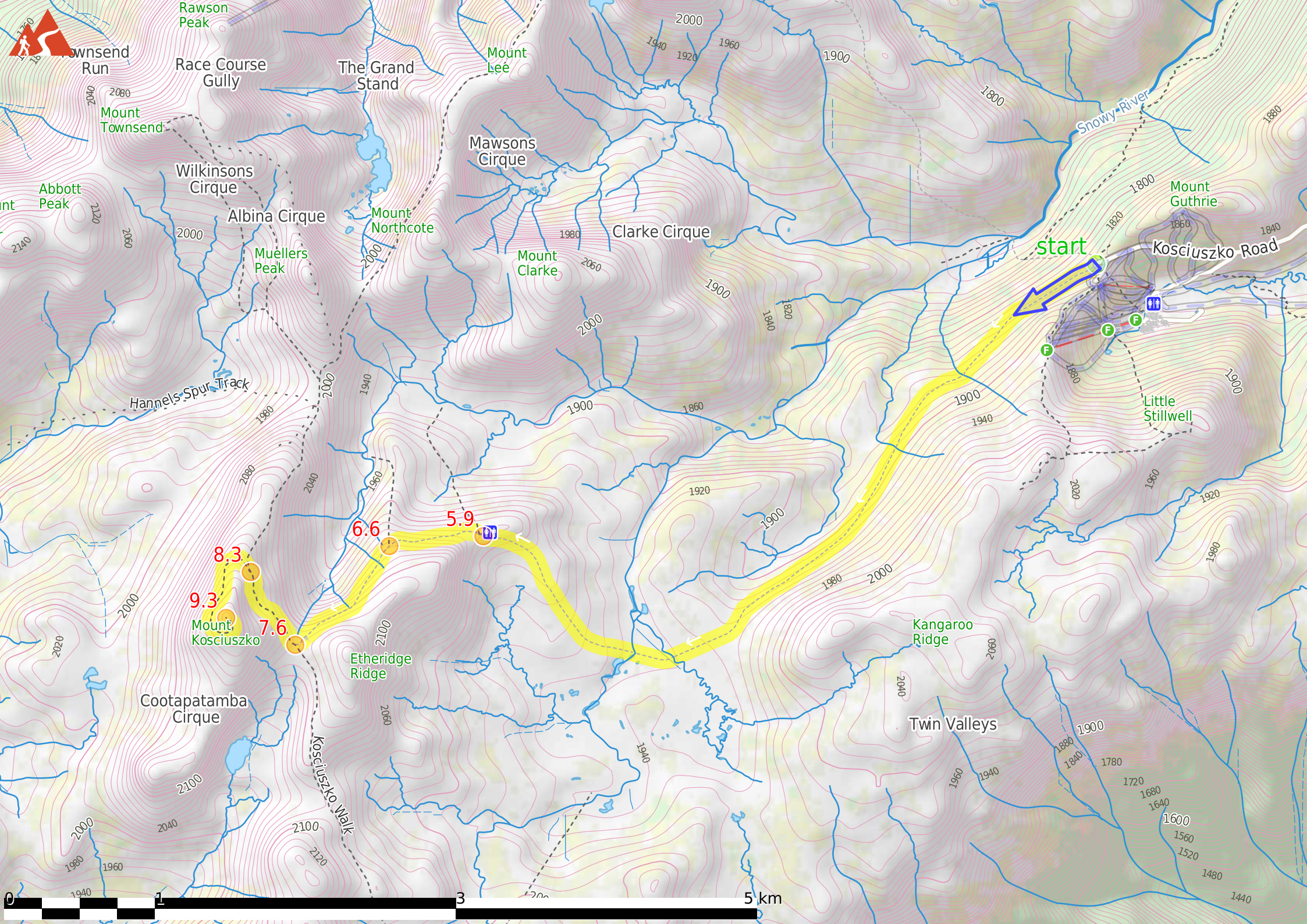
Before you start any journey ensure you;

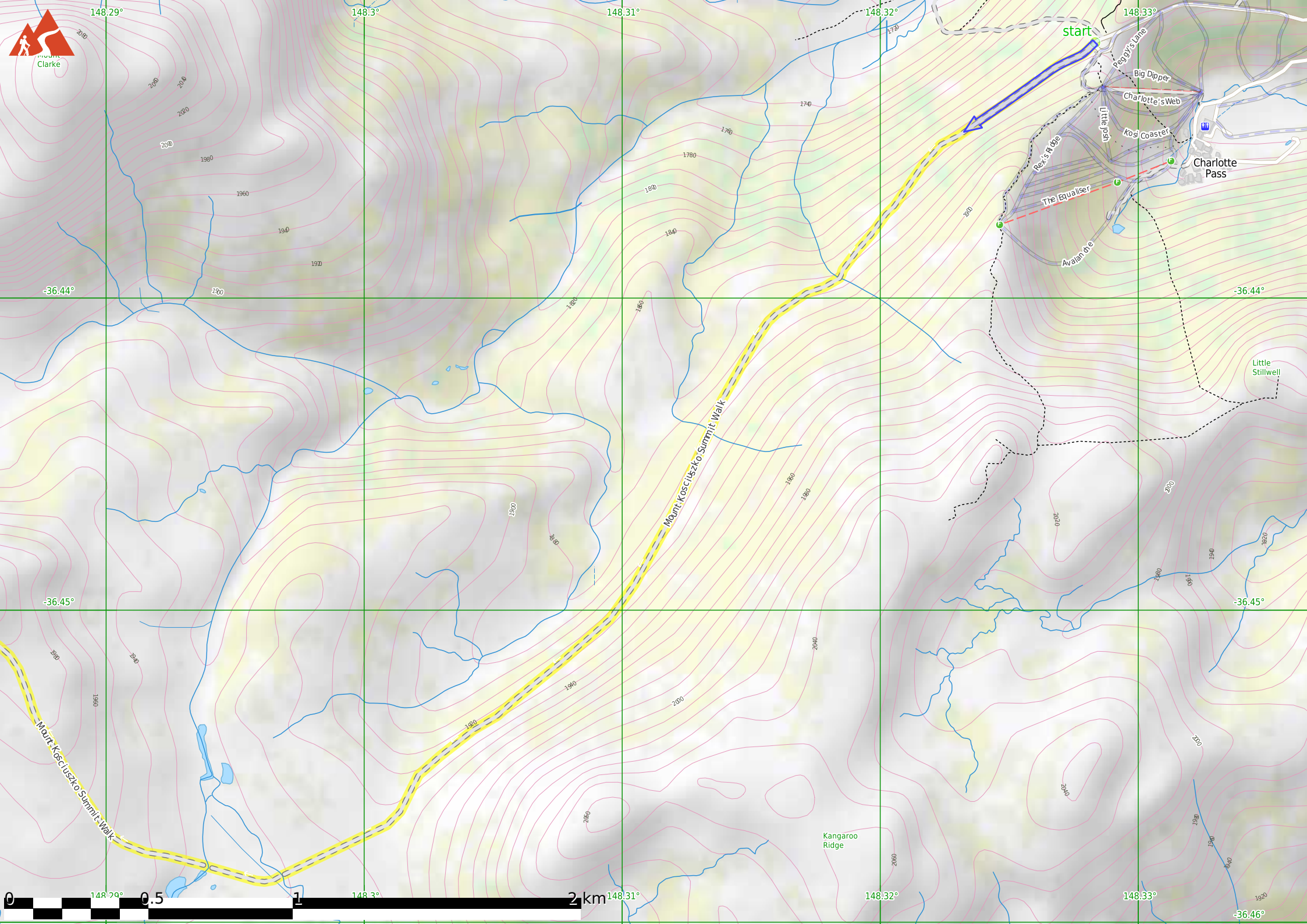
- Tell someone you trust where you are going and what to do if you are late returning
- Have adequate equipment, supplies, skills & knowledge to undertake this journey safely
- Consider weather forecasts, park/track closures & fire dangers
- Can respond to emergencies & call for help at any point
- Are healthy and fit enough for this journey

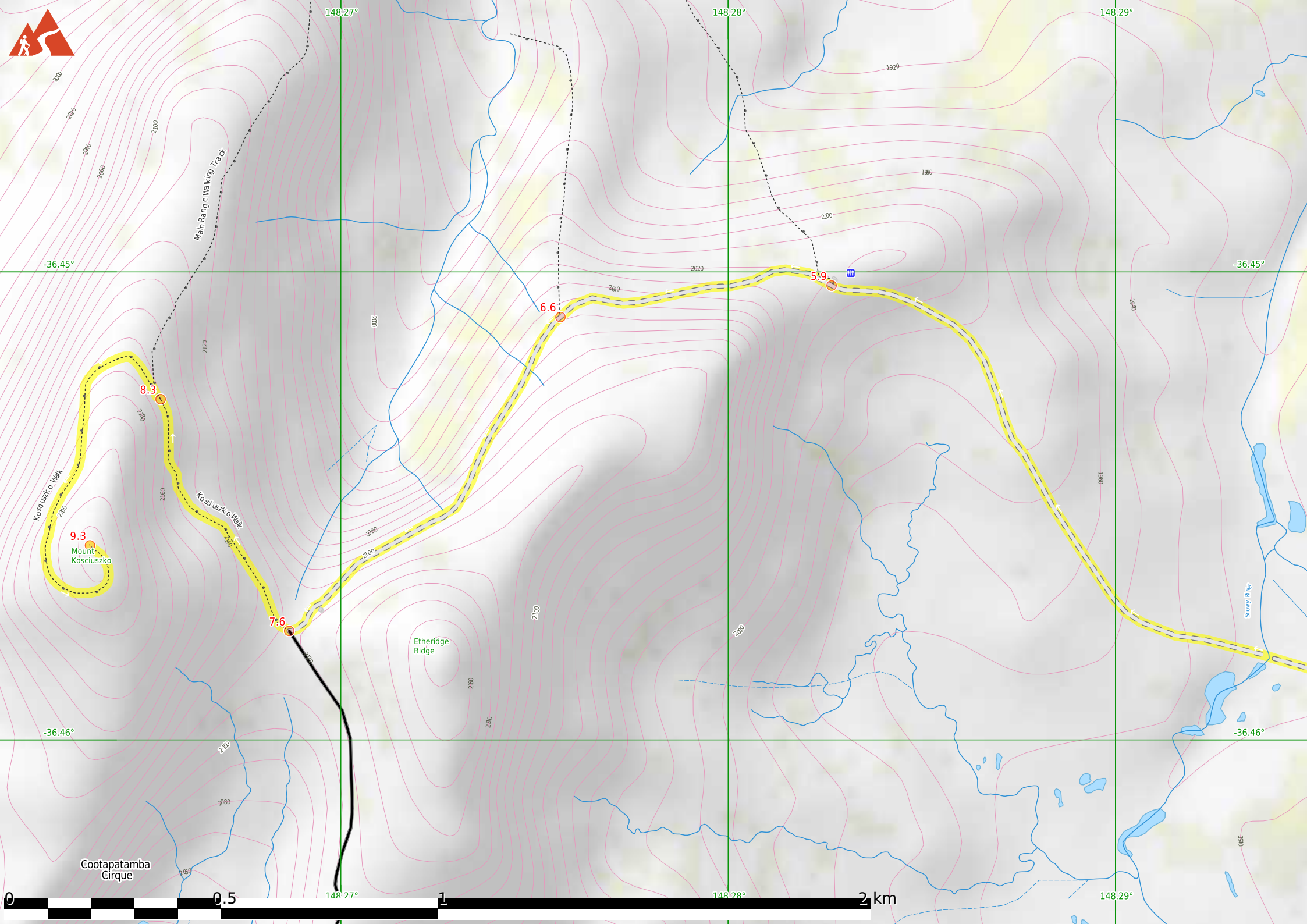
If not, change plans and stay safe. It is okay to delay and ask people for help.

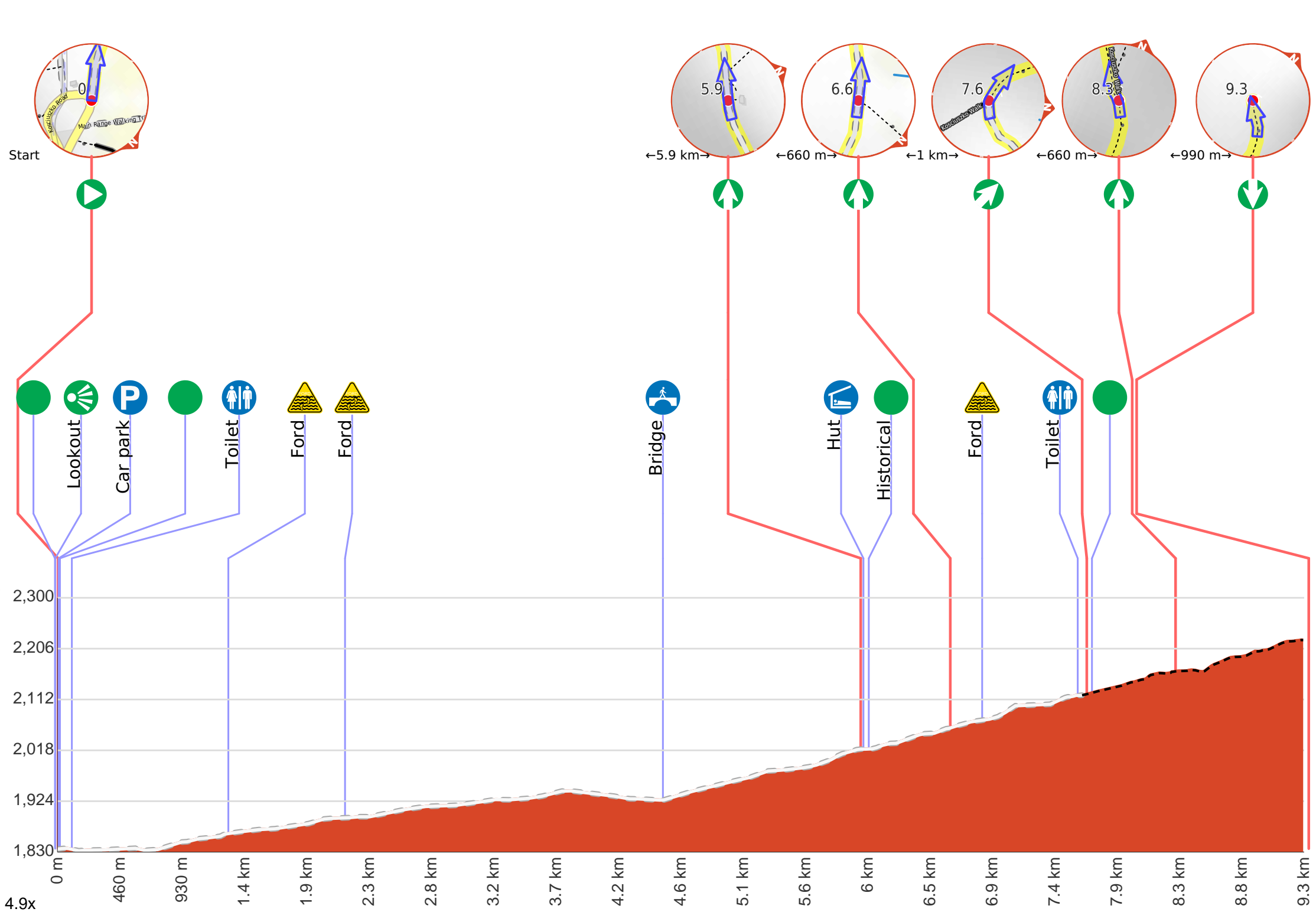
Share
[Bushwalk.com](https://bushwalk.com/j/EYDXVO)
[/j/EYDXVO](https://bushwalk.com/j/EYDXVO)





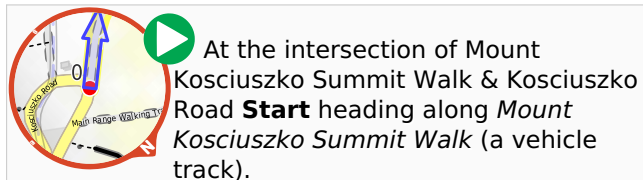







Getting started: From the end of Kosciuszko Rd at Charlotte Pass (just near the toilet block), this walk heads along a wide management trail, following the large 'Summit walk' sign. The walk initially dips down a bit and heads through a grove of snow gums. This walk soon leaves the snow gums and the landscape opens to a fantastic view of the Snowy River and the valley (on your right). After about 1km, the walk passes a yellow 'MT K 8' sign on a snow pole. This walk continues along the management trail and gently undulates up along the side of the long ridge, passing several more 'Mt K' milestone signs counting down. After a while, the old road heads up and over a ridge, passing the 'MT K 5' and the original 'K 3' milestone (on your left) to find the un-signposted concrete bridge over Merritts Creek.


From the bridge, this walk follows the management trail west through the valley, where the trail soon bends right and passes a 'Snowy River' sign, coming to the bridge crossing the river.



 Snow Gums and the Alpine Tree Line (about 70 m back from the start).





Snow gums (*Eucalyptus pauciflora*) are the dominant tree found in Kosciuszko National Park. These slow-growing, distinctive plants have a light grey trunk with smooth red-brown bark, which peels unevenly with a mottled effect. They can be found south along the tablelands into Victoria, and also in Tasmania. Trees are covered with beautiful white flowers from October through to January, which attract lots of bird life. The alpine tree line is the highest altitude at which trees can survive, due to the cold temperatures. However, you will notice that, in some areas, there are no trees in the valleys, while they thrive on the surrounding hills. This is because cool air settles in the alpine valleys, making them colder and less hospitable than slightly higher altitudes.

 Charlotte Pass lookout (about 65 m back from the start).




The Charlotte Pass lookout is a partially fenced lookout, north of the turning circle at the end of Kosciuszko Rd. The view is great, looking up the headwaters of the Snowy River up to the Main Range. To the left is Charlotte Pass (the actual pass only - there is no view of the village from here). There are also a few information signs explaining the local flora and geology.


 There is a car park (about 40 m back from the start).


 Covered in snow part of the year (about 30 m back from the start).




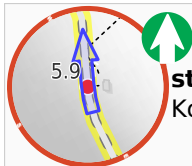
This walk leads through an extreme alpine environment and all walkers must be well prepared. During summer, be prepared for both very hot and cold weather, high winds, rain, snow, extreme UV levels and some sections of snow or ice on the ground. Before starting this walk, check advice with [Snowy Region Visitor Information Centre](http://www.snowyregionvisitors.com.au) (02) 6450 5600, the [weather forecast](#) and the [snow conditions](#) then change your plans as needed. These notes, grades and walking times have been written for use in the summer months only. Between May and the end of October, this walk is likely to be covered in snow/ice, visitors should carry and be prepared to use snowshoes or cross country skis. When there is a chance of significant snow on the ground, visitors will need particularly strong navigation and snowcraft skills - tracks and signage may not be visible. For most visitors, it is best to consider this walk closed during the colder months. Between the long weekend in June and October, the road between Perisher Village and Charlotte Pass is closed by the [RTA](#). It is possible to organise [oversnow transport](#).

 After another 90 m pass the toilet (25 m on your left).

 After another 1.2 km cross the ford.

 After another 860 m cross the ford.

 After another 2.4 km cross the bridge (about 30 m long)



After another 1.4 km **continue straight**, to head along Mount Kosciuszko Summit Walk.



After another 20 m come to the "Seamans Hut" (20 m on your right).

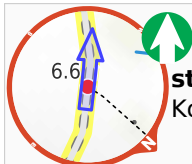
W:khuts.org



After another 40 m find the "Seamans Hut" (8 m on your right).



This hut was erected in 1929, after a young skier named Laurie Seaman perished in a blizzard when he was separated from his group. The hut was built using money donated by Seaman's parents, for the use of those who might need emergency shelter in the mountains. It was renovated in 1938 due to fire. Seamans Hut is a 7m x3m granite stone building with a wood stove, although there is little wood in the area.



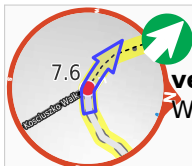
After another 600 m **continue straight**, to head along Mount Kosciuszko Summit Walk.



After another 235 m cross the ford.



After another 710 m pass the "Rawson Pass Toilets" (9 m on your left).



After another 65 m (Rawson Pass) **veer right**, to head along Kosciuszko Walk (a walking track).



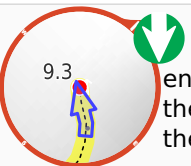
After another 40 m find the "Rawson Pass" (15 m on your right).



Rawson Pass is where the old Kosciuszko Road, from Charlotte Pass, meets the metal walkway from Thredbo. It is home to the highest public toilet in Australia, this recently-added facility is perfectly positioned for those taking the walk up to the top of Kosciuszko. Rawson Pass is well signposted and 500m southeast of Mt Kosciuszko (by a straight line). There is also a place to park mountain bikes for those cycling along the old road from Charlotte Pass.



After another 620 m (at the intersection of Kosciuszko Walk & Main Range Walking Track) **continue straight**, to head along Kosciuszko Walk.



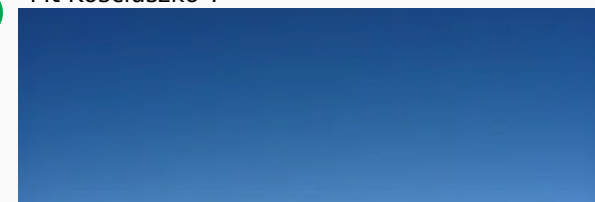
Continue another 990 m to find the end. Then turn around here and retrace the main route for 9.3 km to get back to the start.



A sign.



"Mt Kosciuszko".



Mt Kosciuszko is the highest peak on the Australian continent, at 2228m above sea level. It was named by the Polish explorer Count Paul Edmund Strzelecki and named in honour of the Polish national hero General Tadeusz Kościuszko. Now a popular tourist attraction, thousands of people walk up to the summit each year. On a clear day, the 360-degree views from the summit across the roof of Australia are fantastic. There are higher mountains elsewhere on Australian territory. 'The highest mountains in Australian Antarctic Territory are Mt McClintock (3490 meters) and Mt Menzies (3355 meters).'



About 45 m past the end is "Wragges Observatory Hut".

Wragges Observatory Hut which the remains of a barely visible was built upon the top of Mt Kosciuszko by a government meteorologist named Clement Lindley Wragge, to help take weather readings from the high summit.