



Wheatley Circuit

(Ngarigo Country)

 2 h 30 min to 3 h

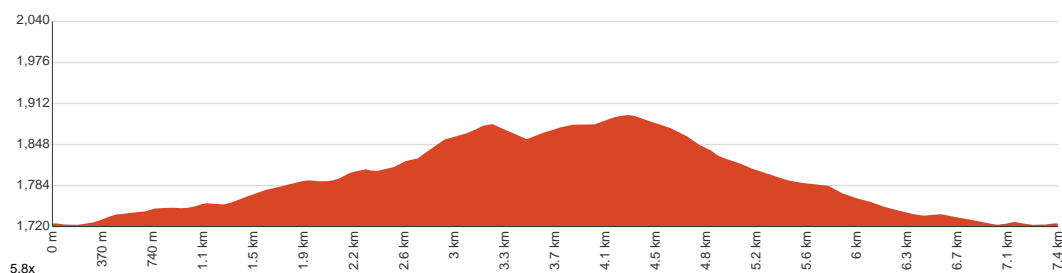
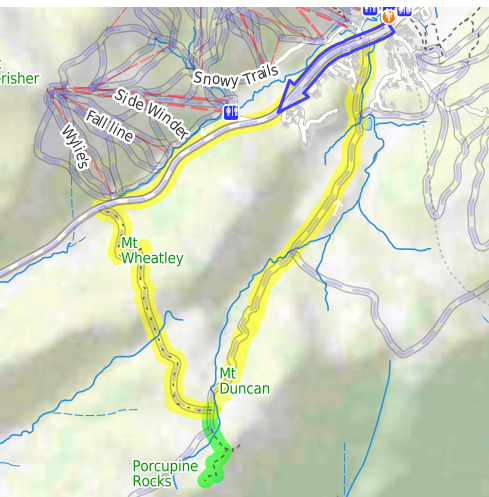

7.4 km
Circuit


↑ 210 m
↓ 210 m


Hard track



This snowshoe walk follows a winter-only route. From Perisher Valley, you walk up along the Kosciuszko Rd to a gap, just past the last ski lift. Here you leave the road to follow the snow pole line up along the Wheatley Link among the snow gums and crossing some open plains. This link leads up to a valley below Porcupine Rocks, where you follow the snow poles and valley back down towards Perisher. A great walk for people comfortable on snowshoes and wanting to explore a more remote area near Perisher Valley. Let us begin by acknowledging the Ngarigo people, Traditional Custodians of the land on which we travel today, and pay our respects to their Elders past and present.



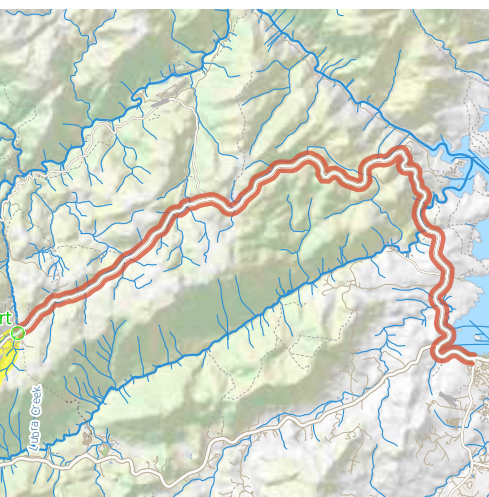
Class 4 of 6

Rough track, where fallen trees and other obstacles are likely

Quality of track	Formed track, with some branches and other obstacles (3/6)
Gradient	Short steep hills (3/6)
Signage	Directional signs along the way (3/6)
Infrastructure	Limited facilities, not all cliffs are fenced (3/6)
Experience Required	Moderate level of bushwalking experience recommended (4/6)
Weather	Foretasted & unexpected storms and severe weather may impact on navigation and safety (4/6)

Getting to the start: From Barry Way

- Turn on to Kosciuszko Road then drive for 12.4 km
- Keep left and drive for another 255 m
- Turn slight left onto Kosciuszko Road and drive for another 18.5 km



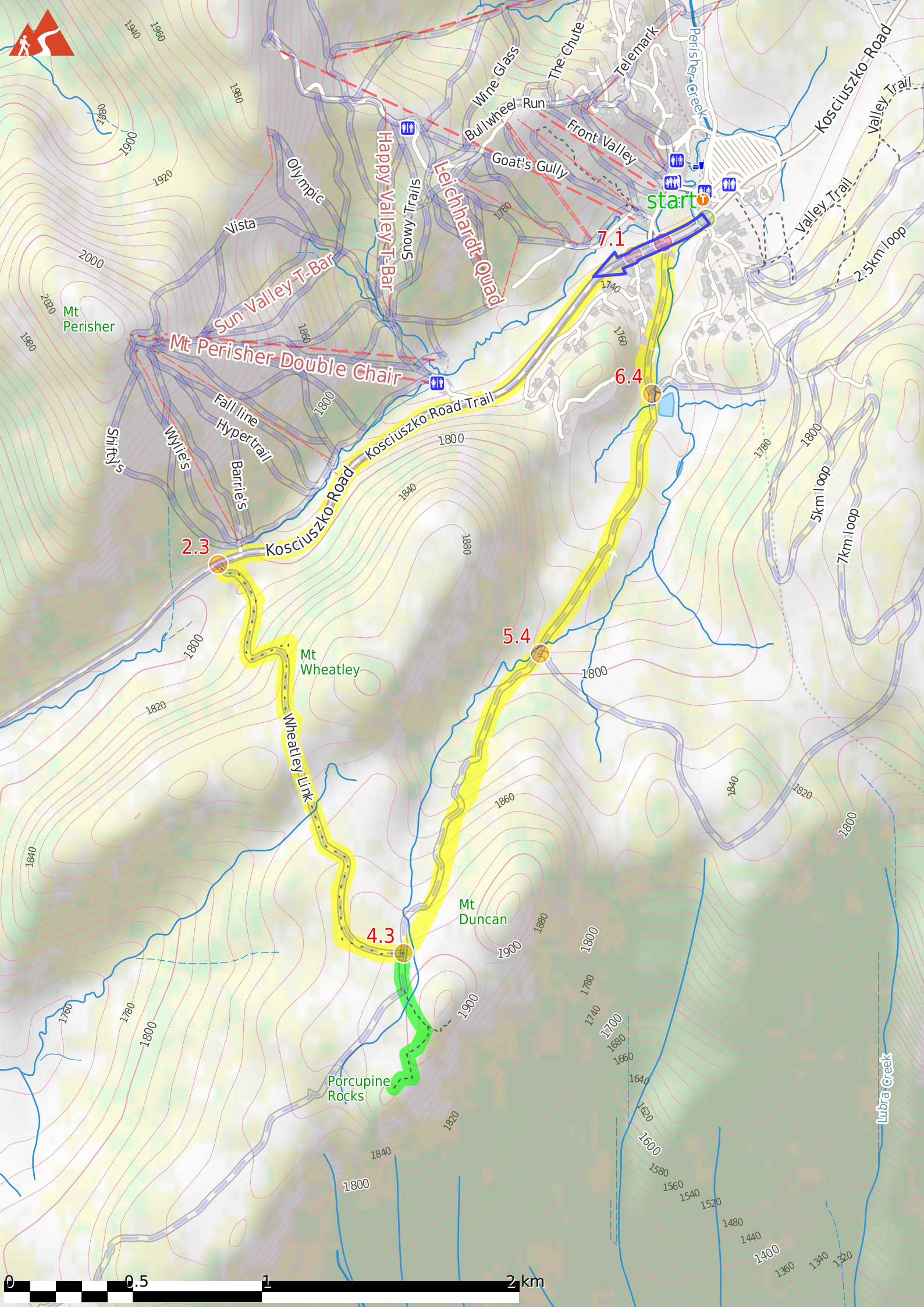
Before you start any journey ensure you;

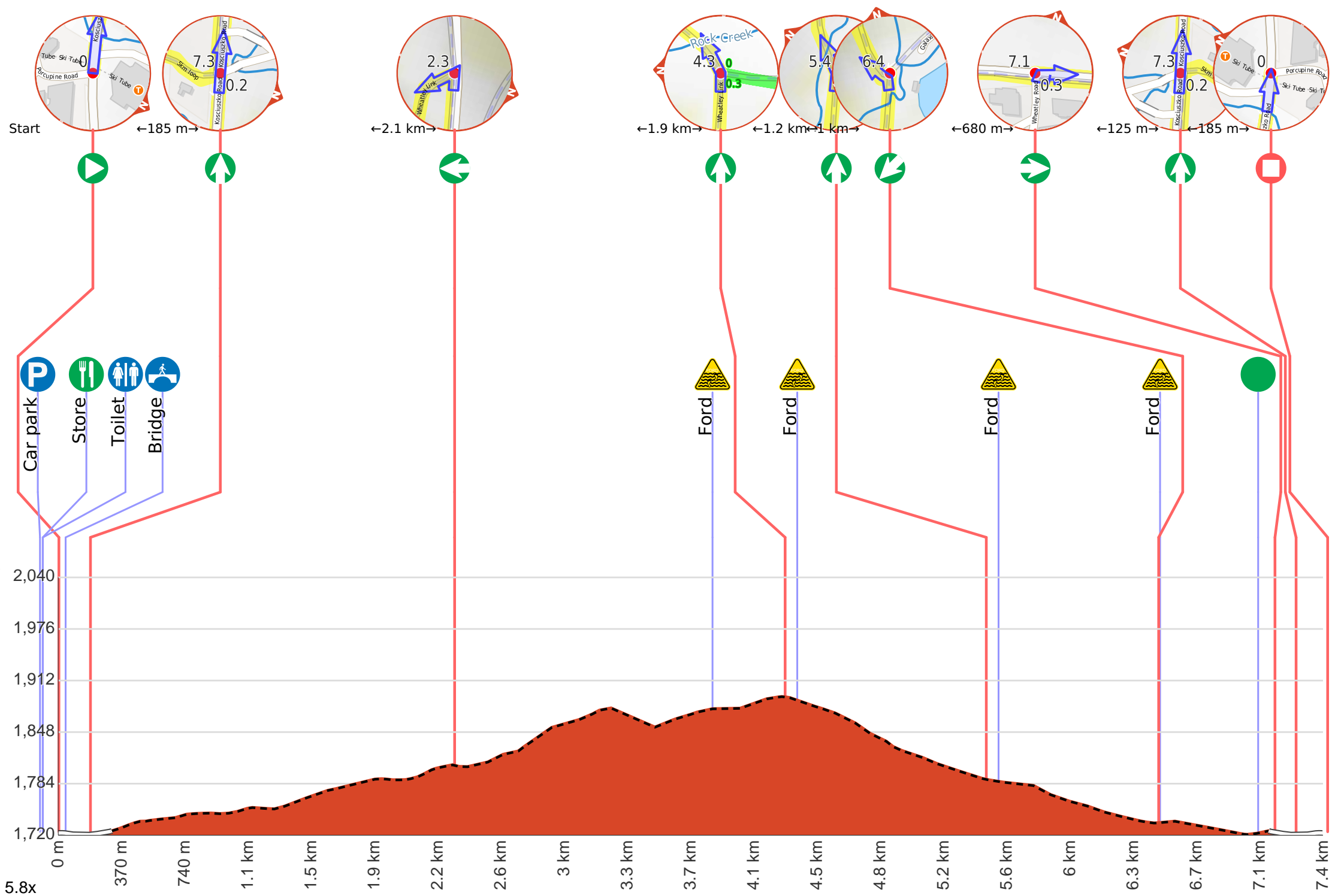
- Tell someone you trust where you are going and what to do if you are late returning
- Have adequate equipment, supplies, skills & knowledge to undertake this journey safely
- Consider weather forecasts, park/track closures & fire dangers
- Can respond to emergencies & call for help at any point
- Are healthy and fit enough for this journey

If not, change plans and stay safe. It is okay to delay and ask people for help.

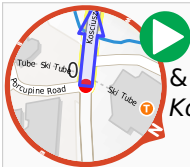
Share
[Bushwalk.com](https://bushwalk.com/ij/C3CVQ4)
[/ij/C3CVQ4](https://bushwalk.com/ij/C3CVQ4)







Getting started: From the intersection, this walk heads west along the main Kosciuszko Rd, away from the 'The Man from Snowy River Hotel' and keeping the main valley to your right. The walk soon crosses Rock Creek, then continues beside the road to an intersection marked with a 'Rock Creek Snowshoe Track' sign just after the 'Rock Creek Ski Club' hut(both on your left).



At the intersection of Kosciuszko Road & Porcupine Road **Start** heading along *Kosciuszko Road* (a road).



After another 20 m **continue straight**, to head along Kosciuszko Road.



There is a car park (about 130 m back from the start).



Perisher Valley Village (about 115 m back from the start).



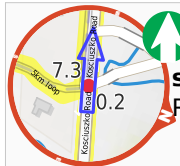
Perisher Valley village is centred about the Skitube building, Perisher Centre and the National Park Visitor Centre. Just outside the Skitube is the shelter for the shuttle bus service to Smiggins. Perisher Centre is accessed by the long metal bridge - inside, you will find food shops, toilets and skiing-related shops. Inside the Skitube building is the train station, kiosk, medical centre and some other services. The National Park Visitor Centre provides a warm shelter, toilets, seats and information about the park. Most of these services only operate during the ski season, but the NPWS visitor centre is open most of the year and a food outlet is generally open for lunch Monday-Friday.



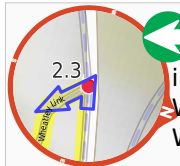
There is a toilet (about 115 m back from the start).



After another 135 m cross the bridge (about 20 m long)



After another 125 m **continue straight**, to head along Kosciuszko Road.

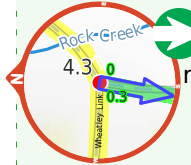


After another 2.1 km (at the intersection of Kosciuszko Road Trail & Wheatley Link) **turn left**, to head along Wheatley Link.



After another 1.5 km cross the ford.

Start of an optional side trip: An optional side trip to Porcupine Saddle.



To start this optional side trip turn right here. **Start.**



After another 380 m **continue straight**.



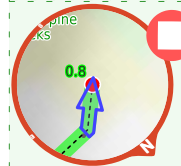
After another 90 m cross the ford.



After another 190 m find the "Porcupine Rocks" (85 m on your left).



The Porcupine Rocks are a large granite outcrop on the ridge, south of Perisher Valley. There are two main peaks, and a rock scramble leads to the top of the southern peak, providing fantastic views of Perisher Valley, Mt Duncan, Thredbo River Valley and Bullocks Flat. The gap between the two summits provides some shade and protection from the wind. An amazing place to visit - allow time to just relax and enjoy this place. The summit can be slippery and icy, and there is a shear drop and other hazards. Much care is required.



After another 160 m come to the end.



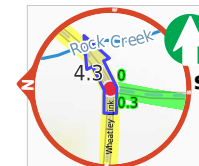
About 60 m past the end is "Porcupine Rocks".



Turn around and retrace your steps back the 830 m to the main route.



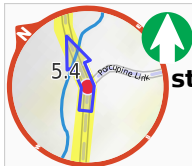
Back at the main route turn right and follow on from the 4.3 km waypoint.



After another 430 m **continue straight**.



After another 70 m cross the ford.



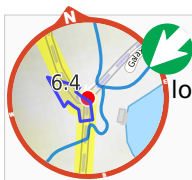
After another 1.1 km **continue straight**.



After another 70 m cross the ford.



After another 950 m cross the ford.



Turn sharp left, to head along 5km loop.



After another 580 m find the "Rock Creek Ski Club" (10 m on your right).



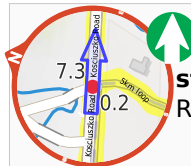
This building was first opened for use in 1948 then destroyed by a lightning strike in January the next year. In 1959, a few men drove down from Sydney most weekends over a few years to build the current lodge. Still owned by the builders' families, the lodge is available to the public for hire. The lodge has two bedrooms and sleeps 6 people. The lodge can be hired in winter or in summer and makes for a great base with its central location in Perisher Valley.
rockcreek.org.au info@rockcreek.org.au



After another 100 m (at the intersection of Kosciuszko Road & Wheatley Road) **turn right**, to head along Kosciuszko Road (a road).



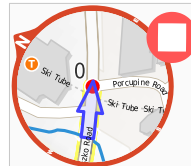
After another 75 m **continue straight**, to head along Kosciuszko Road.



After another 45 m **continue straight**, to head along Kosciuszko Road.



After another 165 m **continue straight**, to head along Kosciuszko Road.



After another 20 m come to the end.