



# Carrington Park to Marguerite Cascades

(Dharug & Gundungurra Country)

 1 h 15 min to 2 h 30 min

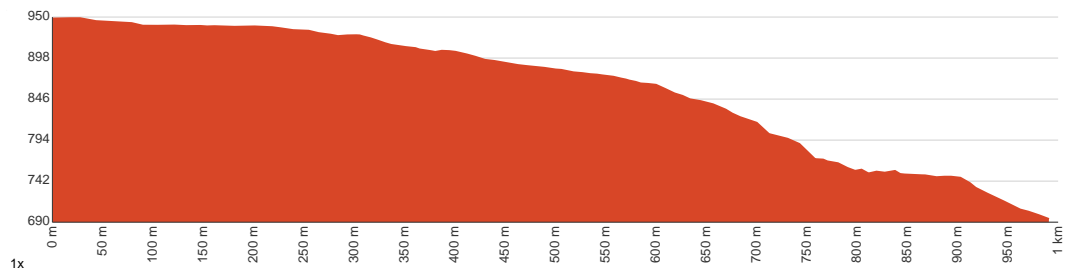
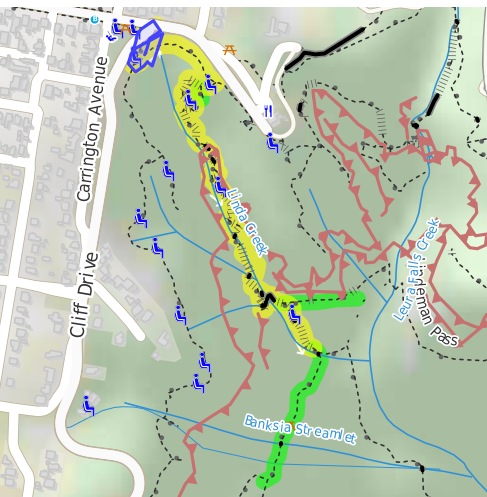
  
2 km  
Return

  
↑ 276 m  
↓ 276 m

  
Hard track



This walk explores the eastern end of Federal Pass track. Starting near Carrington Park, on Cliff Drive, the walk descends steeply, passing the Jamieson Lookout, Fern Bower and Lila and Linda falls. A couple more stair cases and the track comes to Marguerite Cascades. A side trip down to Laura Forest is also described, this is a nice spot to rest. Let us begin by acknowledging the Dharug & Gundungurra people, Traditional Custodians of the land on which we travel today, and pay our respects to their Elders past and present.



Class 4 of 6 Rough track, where fallen trees and other obstacles are likely	
Quality of track	Rough track, where fallen trees and other obstacles are likely (4/6)
Gradient	Very steep (4/6)
Signage	Directional signs along the way (3/6)
Infrastructure	Limited facilities, not all cliffs are fenced (3/6)
Experience Required	No experience required (1/6)
Weather	Weather generally has little impact on safety (1/6)

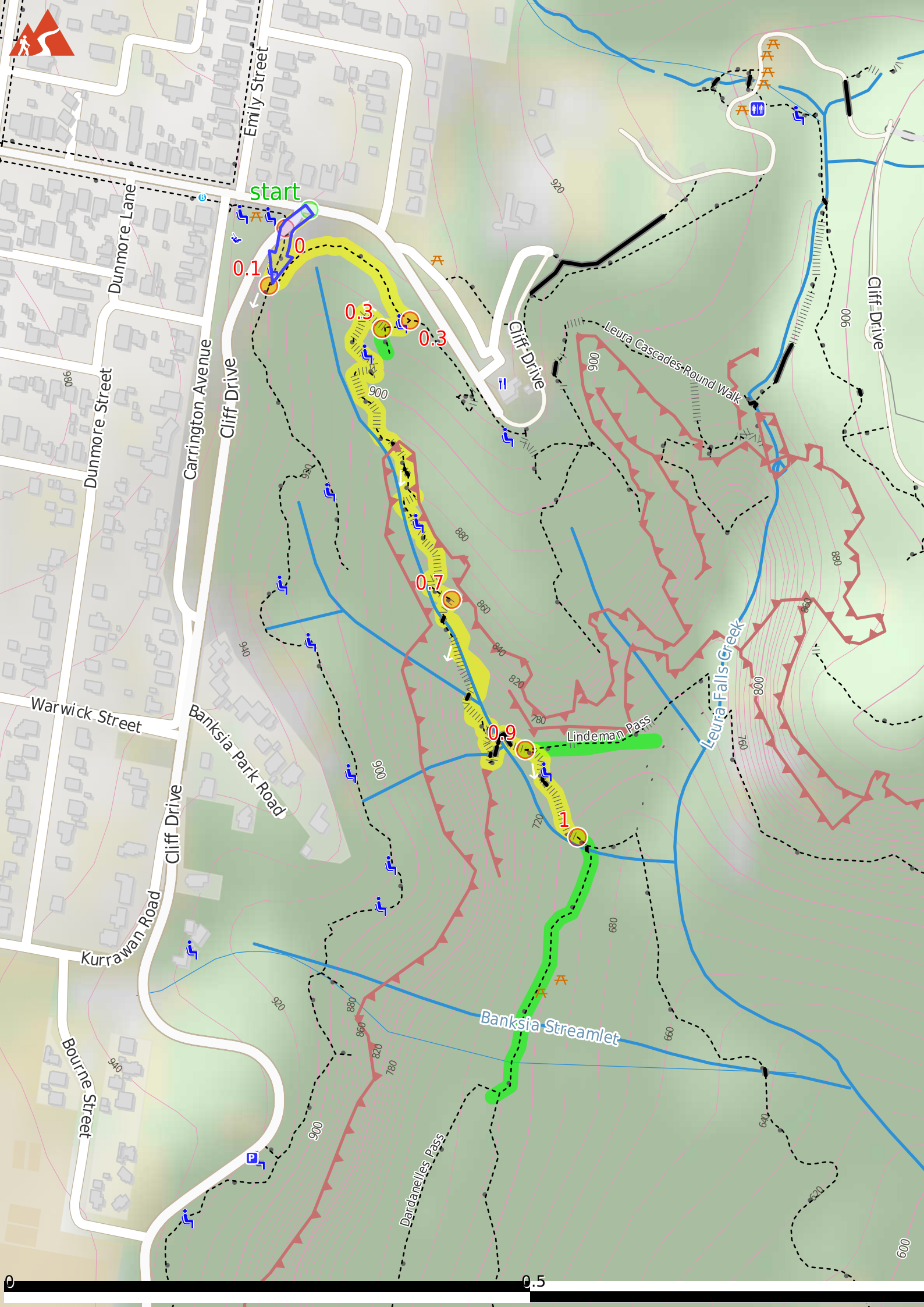
## Before you start any journey ensure you;

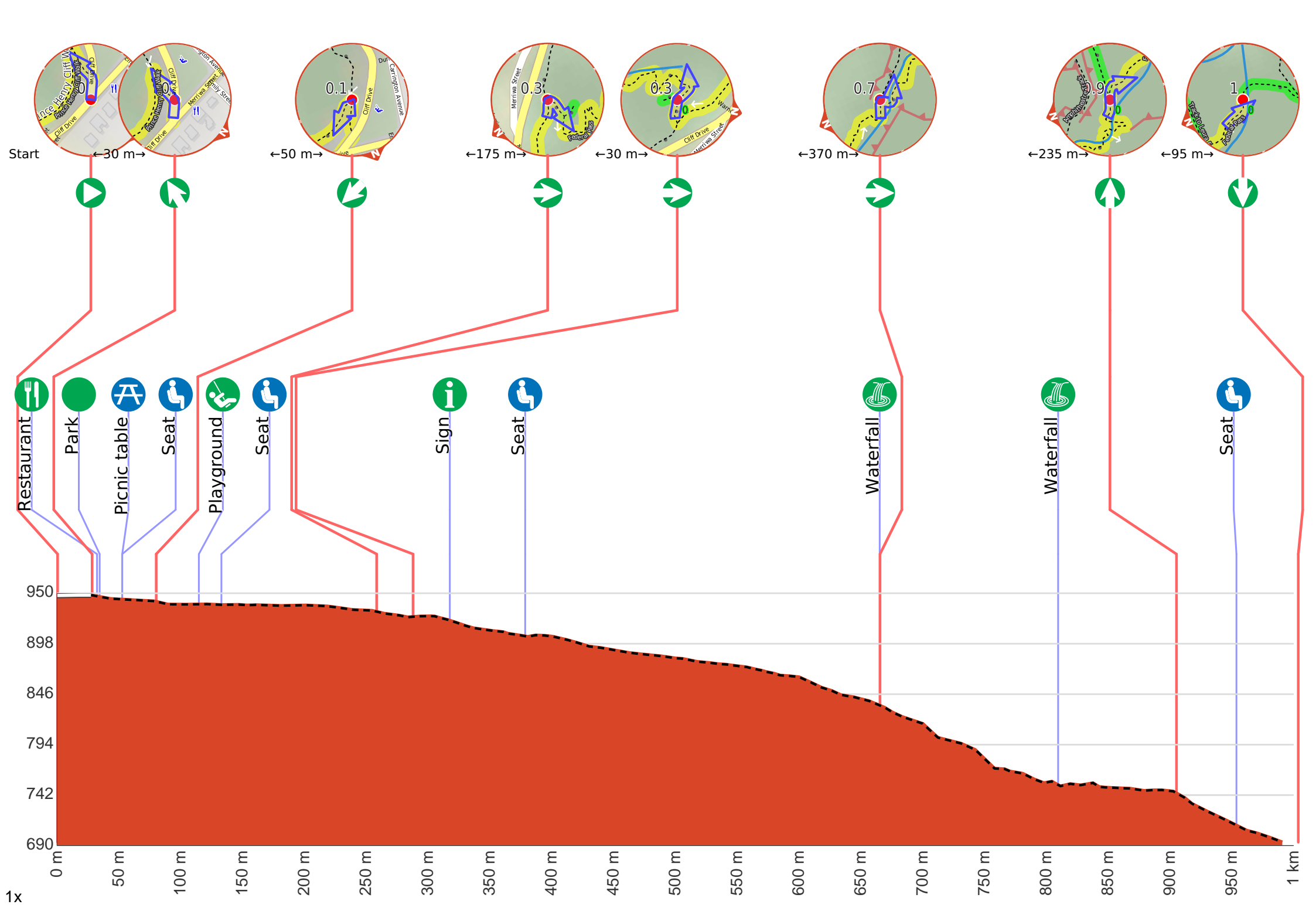
- Tell someone you trust where you are going and what to do if you are late returning
- Have adequate equipment, supplies, skills & knowledge to undertake this journey safely
- Consider weather forecasts, park/track closures & fire dangers
- Can respond to emergencies & call for help at any point
- Are healthy and fit enough for this journey

If not, change plans and stay safe. It is okay to delay and ask people for help.

Share  
[Bushwalk.com](https://bushwalk.com.au/j/SOBNHR)  
[/j/SOBNHR](https://bushwalk.com.au/j/SOBNHR)

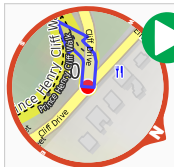








**Getting started:** From Carrington Park, the walk crosses Cliff Drive and goes down the stairs and past the sign for 'Blue Mountains National Park'. The walk continues down the stairs until reaching an intersection signposted with the way to 'Echo Point' or 'Leura Cascades'.



**Start.**



After 30 m pass the "The Rooster French Restaurant" (40 m on your right).



**Veer left.**



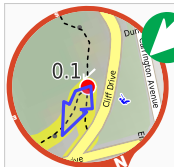
After another 6 m pass the "Carrington Park" (6 m on your right).



After another 20 m pass the picnic table (25 m on your right).



Then pass a seat (20 m on your right).



After another 25 m **turn sharp left.**



After another 35 m pass the playground (45 m on your right).



After another 20 m pass a seat (on your right).



After another 125 m **turn right.**

**Start of an optional side trip:** An optional side trip to Jamieson Lookout.



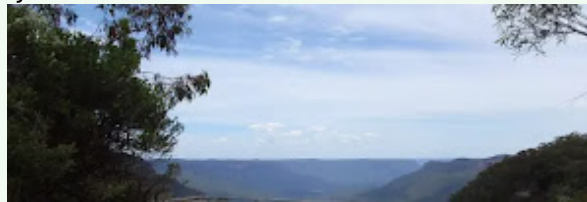
To start this optional side trip turn left here. **Start.**



About 25 m past the end is a seat.



"Jamieson Lookout".



Jamieson Lookout is a fenced lookout at the east end of the Federal Pass track, and just off Prince Henry Cliff Walk. The lookout has a bench seat and provides great views up the Jamieson Valley, along Kings Tableland escarpment and past Mount Solitary. The lookout is perched up on a large rock buttress, giving views unobscured by trees.



Turn around and retrace your steps back the 20 m to the main route.



Back at the main route veer left and follow on from the 285 m waypoint.



After another 30 m **turn right.**



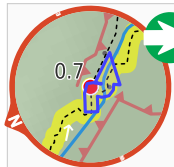
After another 30 m pass the "Federal Pass" (on your right).



After another 60 m pass a seat (on your left).



After another 285 m pass the "Lila Falls" (9 m on your right).



**Turn right.**

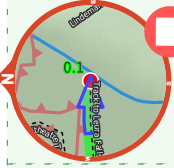


After another 140 m pass the "Linda Falls" (on your left).

**Start of an optional side trip:** Side trip to Leura Falls.



To start this optional side trip continue straight here. **Start.**



After another 125 m come to the end.



About 35 m past the end is "Leura Falls".



Turn around and retrace your steps back the 125 m to the main route.



Back at the main route turn sharp left and follow on from the 890 m waypoint.



After another 95 m **continue straight.**



After another 50 m pass a seat (6 m on your left).

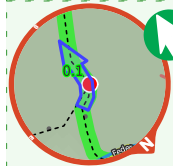


After another 50 m come to "Marguerite Cascades".

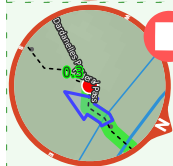
**Start of an optional side trip:** An optional side trip to Leura Forest.



To start this optional side trip continue straight here. **Start.**



After another 95 m **veer left.**



After another 160 m come to the end.



About 10 m past the end is a shelter.



About 60 m past the end is "Leura Forest".



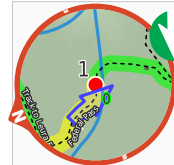
Leura Forest is a great picnic area in the Jamison Valley at the junction of the Federal Pass and Dardenelles Tracks. This place was home to a popular tea house (also known as 'Lady Carrington Dining Hall') from the late 1800's. Today walkers can still enjoy the historic rotunda and the foundations of the original tea house. The picnic area provides a great rest spot under the shade of the lilli pilli and coachwood forest.



Turn around and retrace your steps back the 255 m to the main route.



Back at the main route turn right and follow on from the 990 m waypoint.



Turn around here and retrace the main route for 990 m to get back to the start.