



Serpentine Falls via the Kitty's Gorge Trail

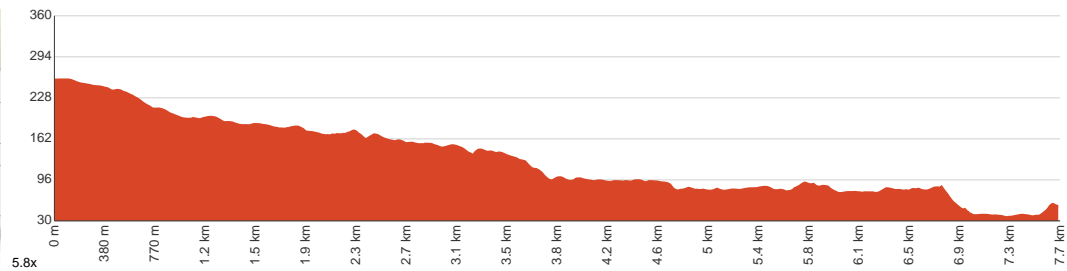
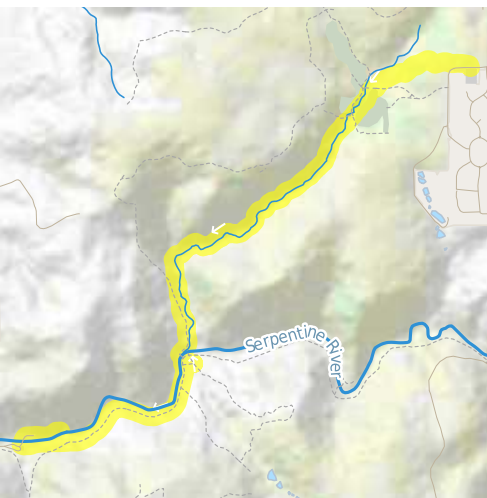
3 h to 5 h

15.3 km
Return

↑ 457 m
↓ 457 m

3
Moderate track

Starting from the car park opposite the Jarrahdale Cemetery on Atkins Street, Jarrahdale, this walk leads to Serpentine Falls and back via Kitty's Gorge Trail. This stunning return walk in the Jarrah Woodlands takes you along Gooralong Brook. There is a lot of variety in the scenery and terrain, and splendid views from the hills above the gorge reward some steady climbs. At Serpentine Falls, a waterfall cascades over a sheer water-polished granite rock face, forming a pool at its base that is perfect for a lovely dip on a warm day. Near the falls, walkers have access to a family-friendly picnic area with tables, barbeques and toilets. Let us begin by acknowledging the Traditional Custodians of the land on which we travel today, and pay our respects to their Elders past and present.



Class 3 of 6 Formed track, with some branches and other obstacles	
Quality of track	Formed track, with some branches and other obstacles (3/6)
Gradient	Gentle hills with occasional steps (2/6)
Signage	Directional signs along the way (3/6)
Infrastructure	Generally useful facilities (such as fenced cliffs and seats) (2/6)
Experience Required	Some bushwalking experience recommended (3/6)
Weather	Storms may impact on navigation and safety (3/6)

Getting to the start: From South Western Highway, 22, 206

- Turn on to Jarrahdale Road, 22, 206 then drive for 6.3 km
- Turn right onto Oak Way and drive for another 155 m
- Turn right onto Atkins Street and drive for another 440 m

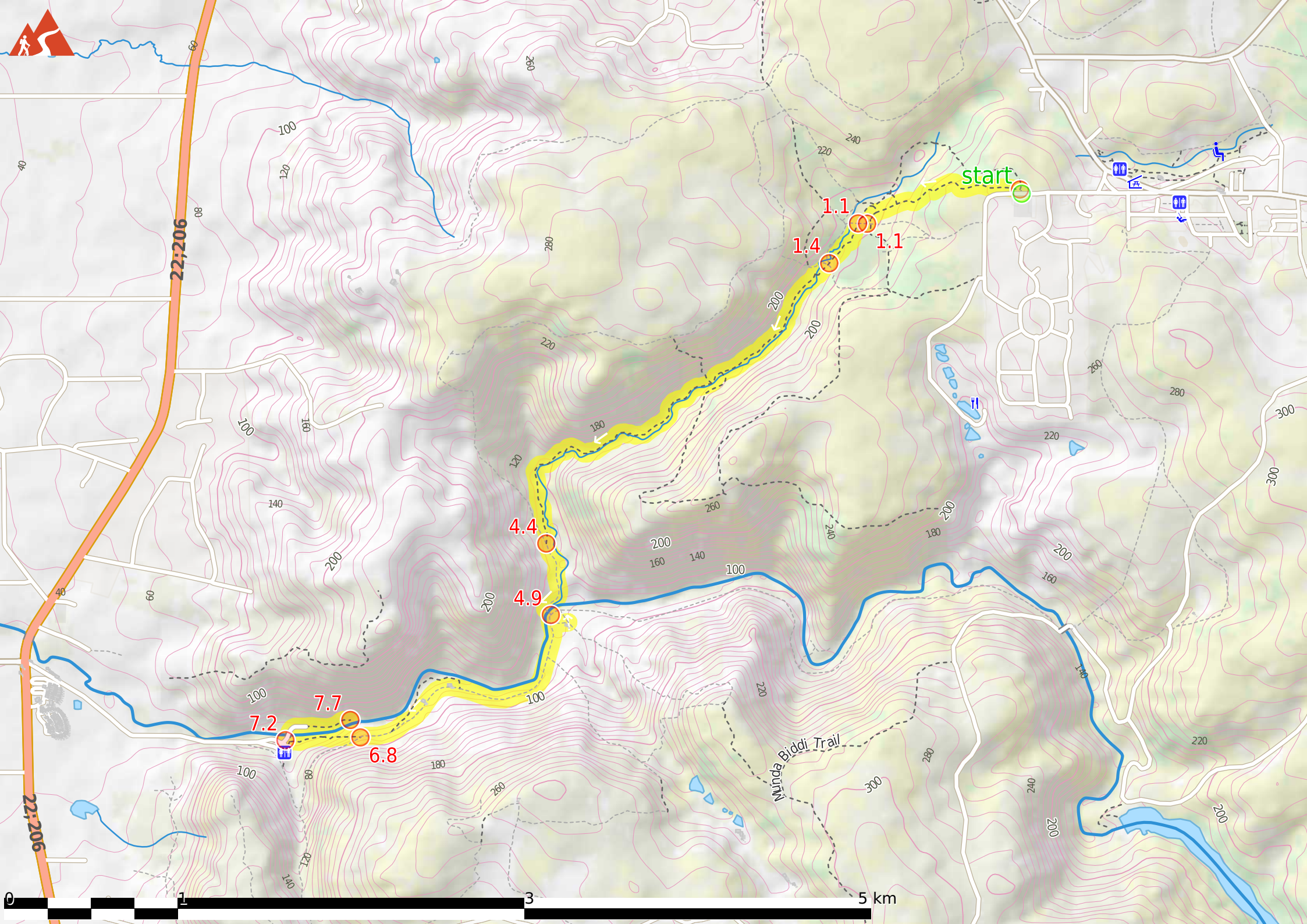
Before you start any journey ensure you;

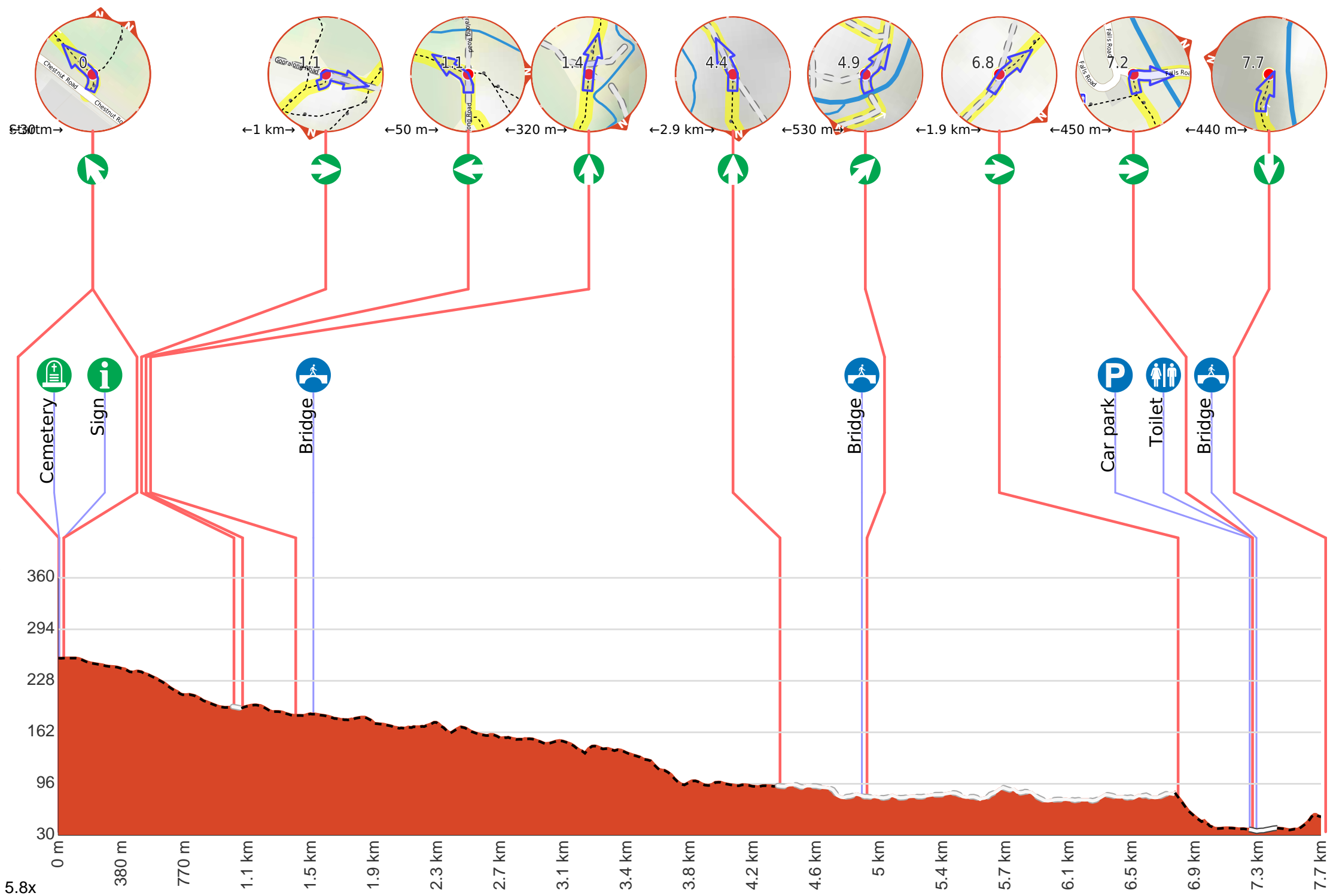
- Tell someone you trust where you are going and what to do if you are late returning
- Have adequate equipment, supplies, skills & knowledge to undertake this journey safely
- Consider weather forecasts, park/track closures & fire dangers
- Can respond to emergencies & call for help at any point
- Are healthy and fit enough for this journey

If not, change plans and stay safe. It is okay to delay and ask people for help.

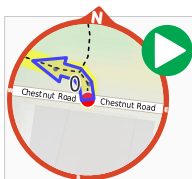
Share
Bushwalk.com
[/ij/SKHQA0](https://bushwalk.com/ij/SKHQA0)







Getting started: From the carpark opposite the Jarrahdale Cemetery on Atkins Street, Jarrahdale, head along the dirt track through the bushes, marked with a red 'Serpentine Trails' sign at the carpark. Take a left turn shortly after passing a sheltered informative display, and continue ahead for about 1km. After passing the remaining buildings of Gooralong Park and a clear open space, continue past a strand of pine trees to reach the start of the Kitty's Gorge Trail, marked with some informative signage. Head along the Kitty's Gorge Trail to continue the hike to Serpentine Falls.



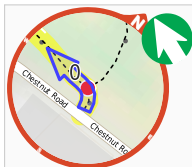
Start.



Jarrahdale Cemetery (about 15 m back from the start).



After 30 m pass the sign (on your left).



Veer left.



After another 800 m **continue straight.**



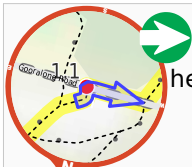
After another 130 m **continue straight.**



After another 15 m **continue straight.**
Keep left.



After another 45 m **continue straight.**
Keep right.



After another 35 m **turn right**, to head along Gooralong Road.



After another 50 m **turn left.**



After another 320 m **continue straight.**



After another 105 m cross the bridge (about 15 m long)



After another 890 m **continue straight.**



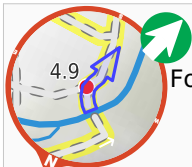
After another 100 m **continue straight.**



After another 1.8 km **continue straight.**



After another 500 m cross the bridge (about 10 m long)



After another 20 m **veer right.**
Follow the river.



After another 490 m **continue straight.**



After another 680 m **continue straight.**



After another 710 m **turn right.**



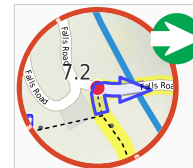
After another 430 m **continue straight.**



After another 8 m pass the car park (8 m on your left).



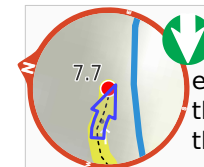
After another 15 m pass the toilet (85 m on your left).



Turn right, to head along Falls Road.



After another 25 m cross the bridge (about 25 m long)



Continue another 400 m to find the end. Then turn around here and retrace the main route for 7.7 km to get back to the start.



"Serpentine Falls".



About 25 m past the end is "Serpentine Falls".