



# Wallaby Walking Track

(Wiradjuri Country)

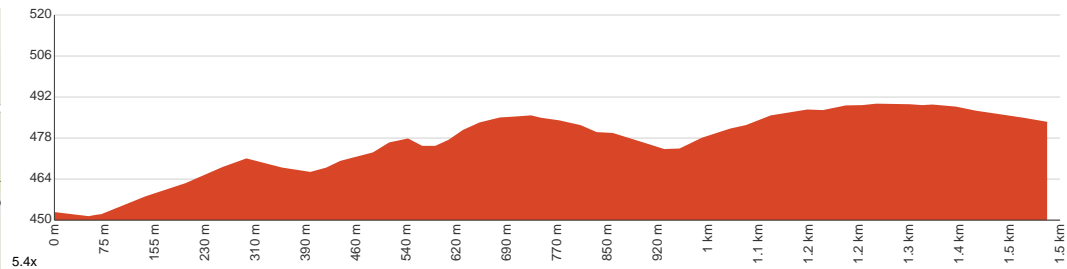
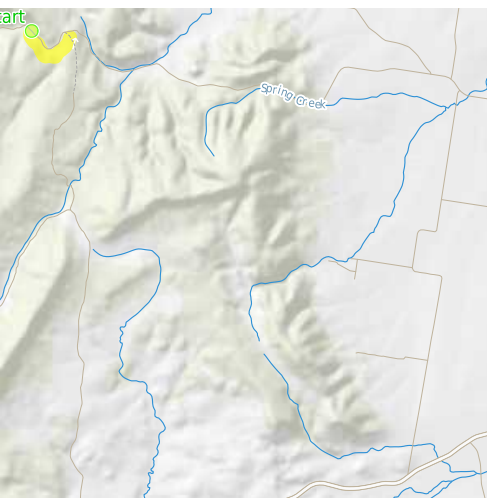
 1 h to 1 h 30 min

  
3 km  
Return

  
↑ 84 m  
↓ 84 m

  
Hard track

Starting from Wallaby picnic area this walk guides you through ironbark and scribbly gum forests to reach the Ironbark picnic area. You can make it as a one-way walk or retrace your steps. Look out for wallabies which the track is called after. Let us begin by acknowledging the Wiradjuri people, Traditional Custodians of the land on which we travel today, and pay our respects to their Elders past and present.



Class 4 of 6 Rough track, where fallen trees and other obstacles are likely	
Quality of track	Rough track, where fallen trees and other obstacles are likely (4/6)
Gradient	Short steep hills (3/6)
Signage	Minimal directional signs (4/6)
Infrastructure	Limited facilities (such as cliffs not fenced, significant creeks not bridged) (4/6)
Experience Required	No experience required (2/6)
Weather	Foretasted & unexpected storms and severe weather may impact on navigation and safety (4/6)

**Getting to the start:** From Mid Western Highway, B64

- Turn on to Tallarook Road then drive for 9.4 km
- Turn left onto Barryrennie Road and drive for another 11 km

## Before you start any journey ensure you;

- Tell someone you trust where you are going and what to do if you are late returning
- Have adequate equipment, supplies, skills & knowledge to undertake this journey safely
- Consider weather forecasts, park/track closures & fire dangers
- Can respond to emergencies & call for help at any point
- Are healthy and fit enough for this journey

If not, change plans and stay safe. It is okay to delay and ask people for help.

Share  
[Bushwalk.com](https://bushwalk.com/j/PK1M7C)  
[/j/PK1M7C](https://bushwalk.com/j/PK1M7C)





start



Wallaby Track

Kangaroo Road

Wallaby Track

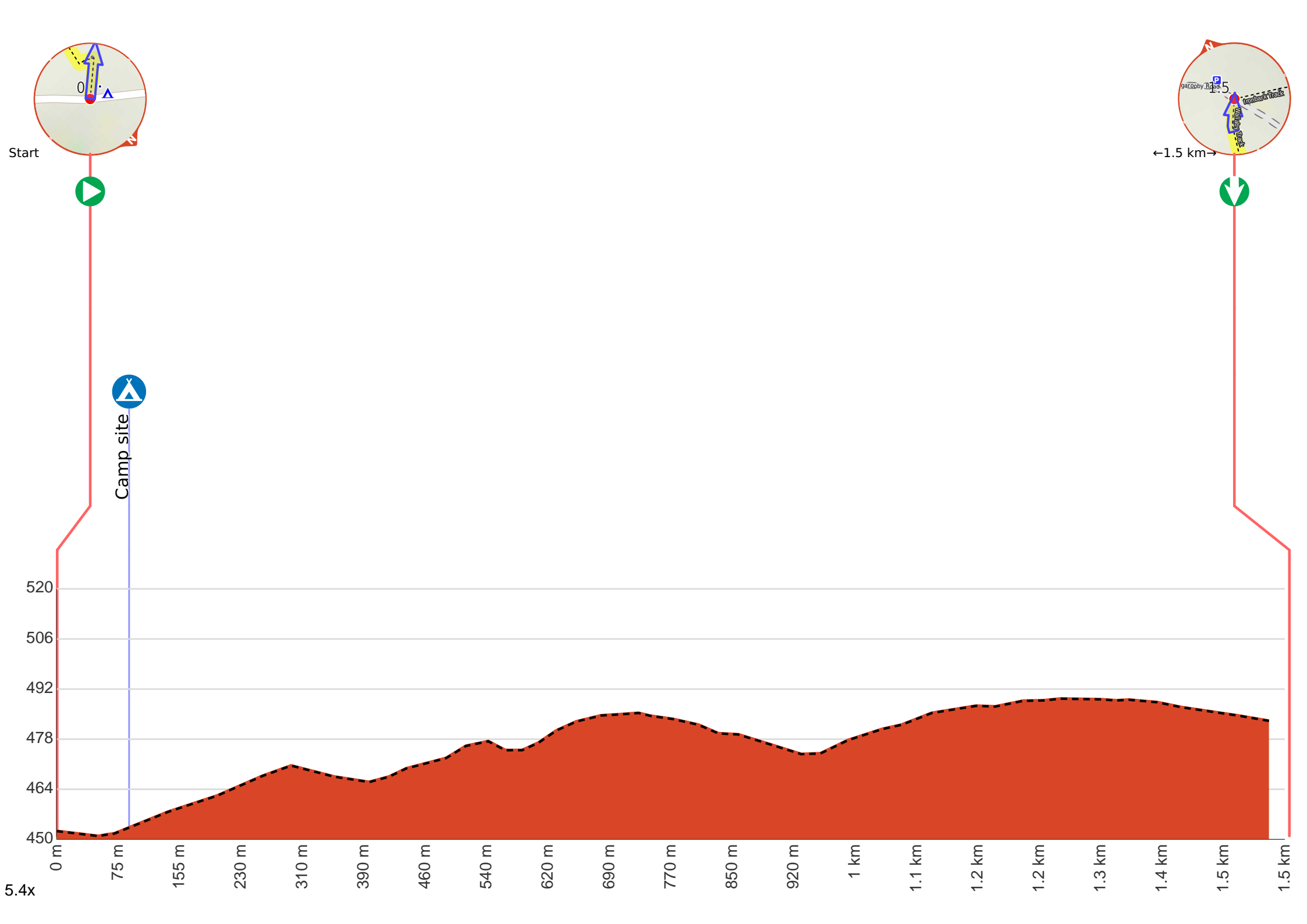
Wallaby Track

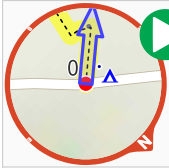
Kangaroo Road

Ironbark Track

1.5







**Start.**



After 90 m come to the "Wallaby Camp" (15 m on your right).



Continue another 1.4 km to find the end. Then turn around here and retrace the main route for 1.5 km to get back to the start.



About 45 m past the end is "Ironbark Car Park".