



# Turret Falls Walk

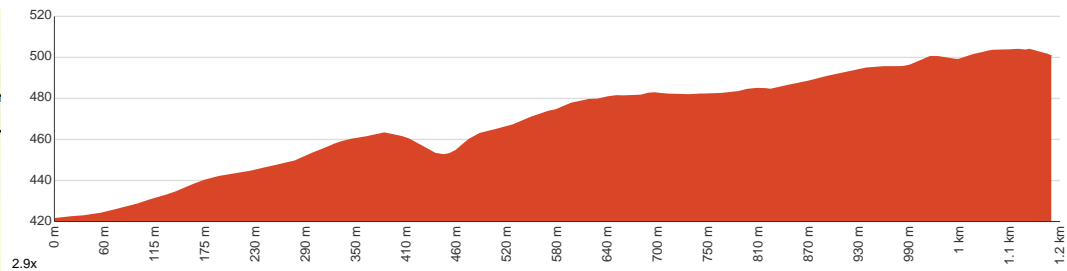
 45 min to 1 h 15 min

  
2.3 km  
Return

  
↑ 113 m  
↓ 113 m

  
Moderate track

Starting from Wonderland Car Park, Halls Gap, this return walk takes you to Turret Falls and back. The area, Wonderland Range, is host to 430 years old sandstones thrust up and shaped by heat and movement through the years. It is a relatively short walk with occasional steps and a formed dirt track. There are also wildflowers in abundance for the enthusiasts that want to observe them. If you're going to get the best experience out of this walk, a visit during the wet season can be helpful as the flow increases. Let us begin by acknowledging the Traditional Custodians of the land on which we travel today, and pay our respects to their Elders past and present.



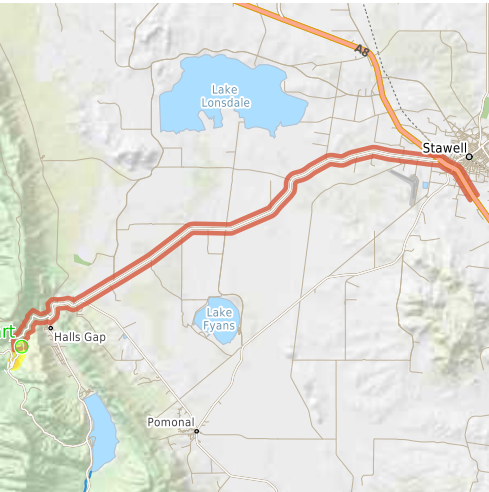
## Class 3 of 6

Formed track, with some branches and other obstacles

Quality of track	Clear and well formed track or trail (2/6)
Gradient	Gentle hills with occasional steps (2/6)
Signage	Clearly signposted (2/6)
Infrastructure	Limited facilities, not all cliffs are fenced (3/6)
Experience Required	No experience required (2/6)
Weather	Weather generally has little impact on safety (2/6)

**Getting to the start:** From Western Highway, A8, Stawell.

- Turn on to Grampians Road, C216 then drive for 24.6 km
- Turn right onto Mount Victory Road, C222 and drive for another 2.3 km
- At roundabout, take exit 1 onto Wonderland Road and drive for another 1.1 km



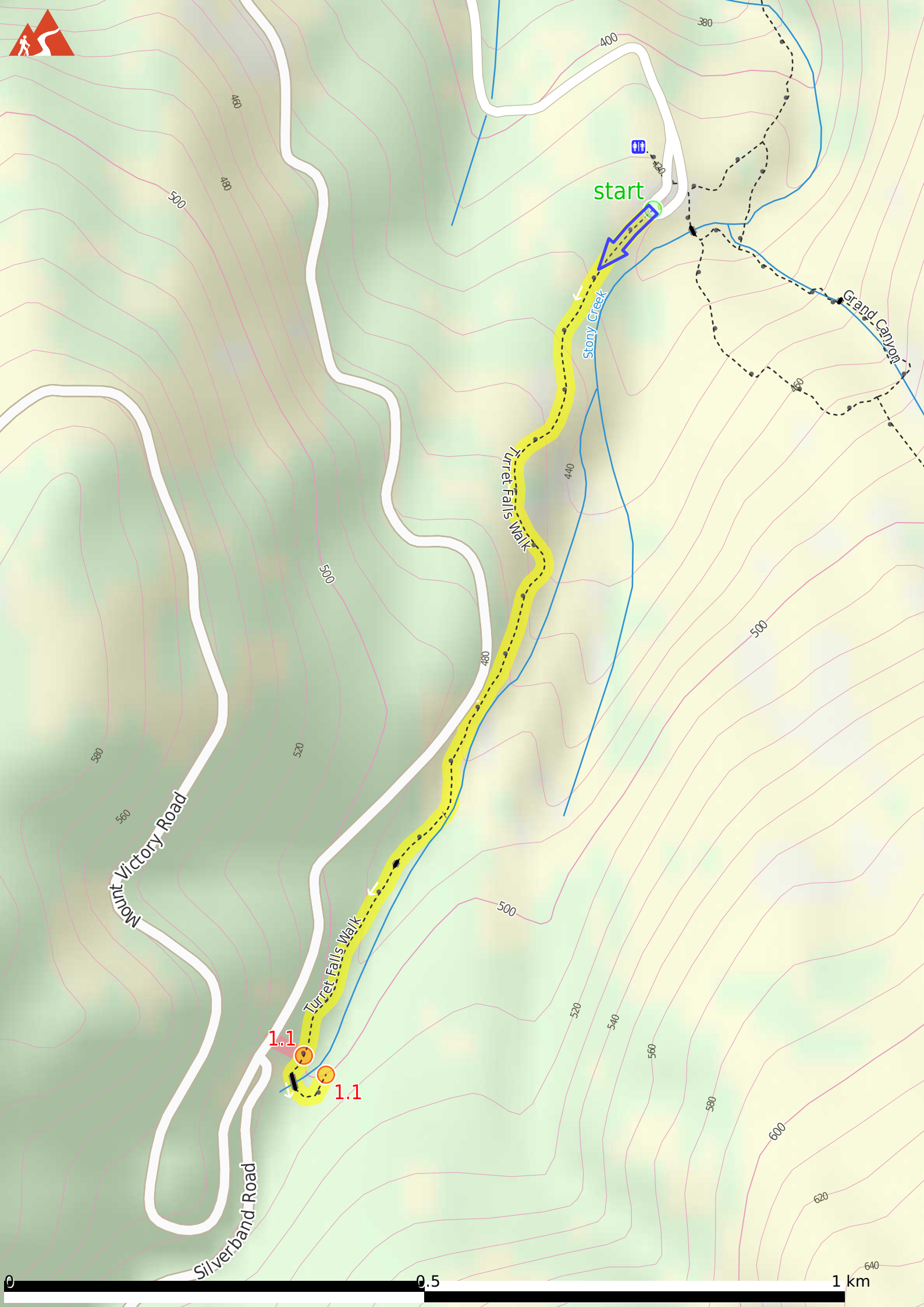
## Before you start any journey ensure you;

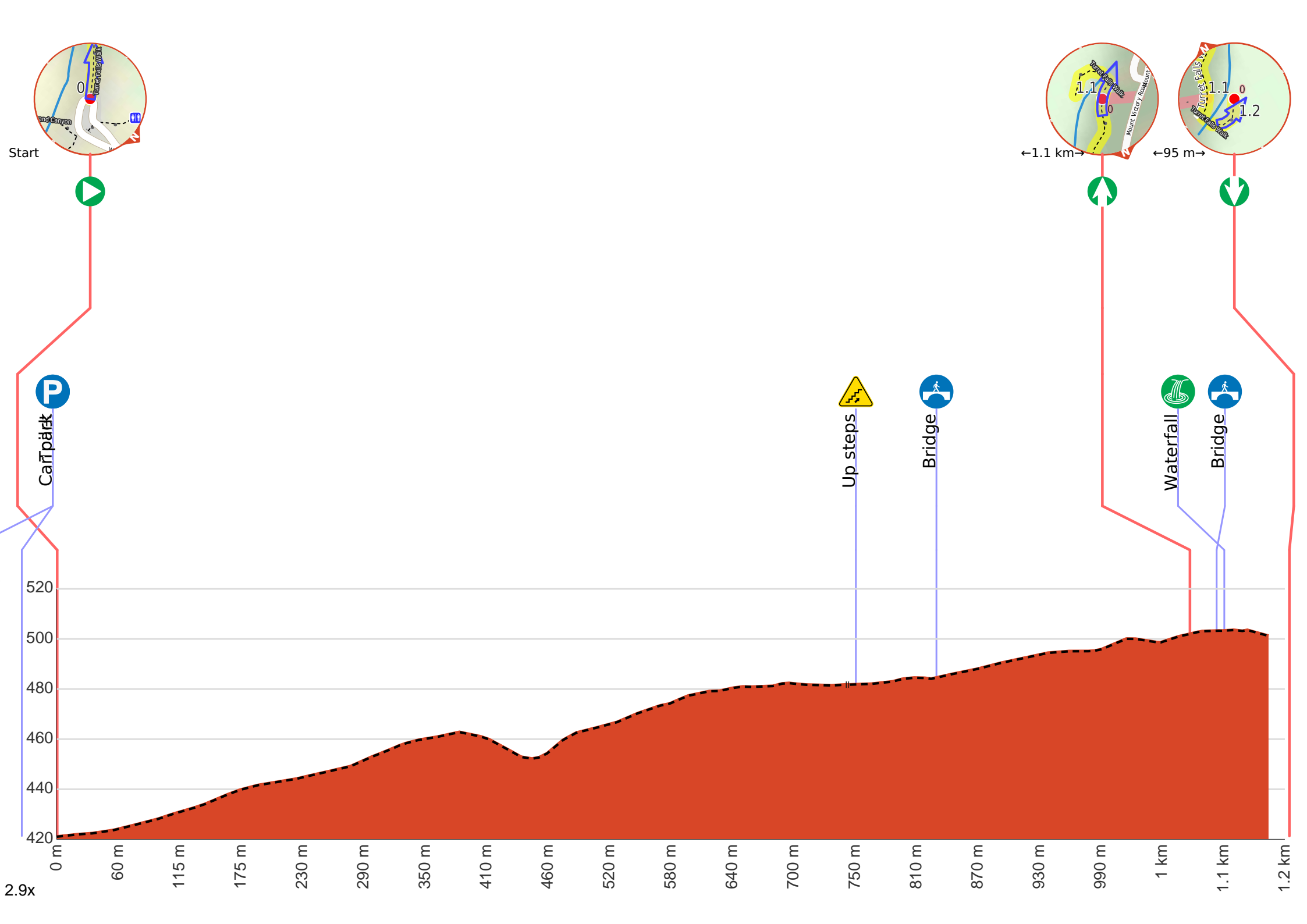
- Tell someone you trust where you are going and what to do if you are late returning
- Have adequate equipment, supplies, skills & knowledge to undertake this journey safely
- Consider weather forecasts, park/track closures & fire dangers
- Can respond to emergencies & call for help at any point
- Are healthy and fit enough for this journey

If not, change plans and stay safe. It is okay to delay and ask people for help.

Share  
Bushwalk.com  
[/j/FWT7AG](https://bushwalk.com/j/FWT7AG)







**Getting started:** From Wonderland Car Park (approximately 600 metres of the south of the intersection with Mount Victory Road), walk towards the wooden picnic bench on your left. Find the dark green "Turret Falls 1.2km" sign and take the dirt track on its left to continue along the Turret Falls.



**Start.**



There is a toilet (about 85 m back from the start).



Wonderland Carpark (about 35 m back from the start).



After another 780 m head up the 3 metal steps (about 4 m long)



After another 70 m cross the bridge (about 6 m long)



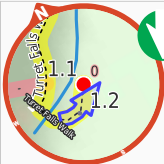
After another 30 m pass the "Turret Falls" (20 m on your left).



Then cross the bridge (about 15 m long)



After another 50 m come to a viewpoint.

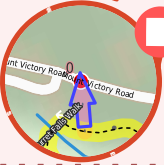


Turn around here and retrace the main route for 1.1 km to get back to the start.

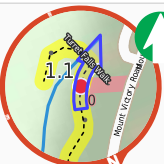
**Start of an alternate access route:** An alternate access point from/to Mount Victory Road.



**Start.**



After another 45 m come to the end.



After another 230 m **continue straight**, to head along Turret Falls Walk.