



# Pulpit Rock Car Park to Lower Lookout

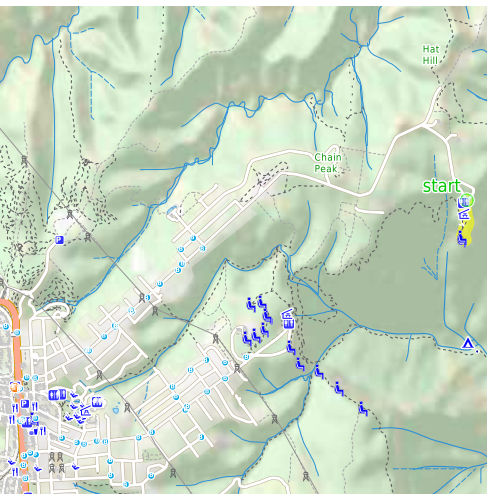
(Dharug & Gundungurra Country)

 40 min to 45 min

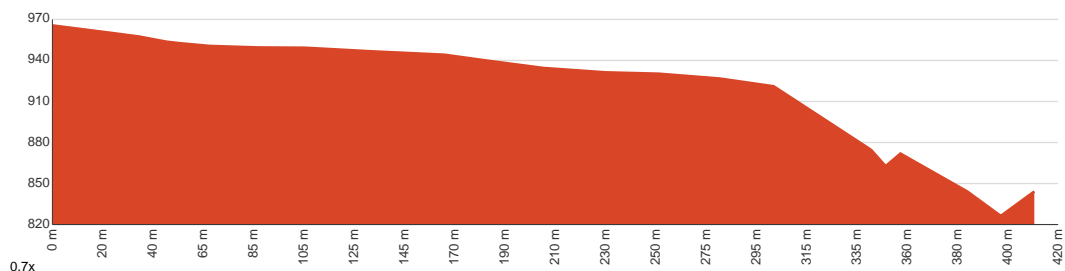
  
820 m  
Return

  
↑ 176 m  
↓ 176 m

  
Hard track



This walk takes in the fabulous views across the Grose Valley. It covers the combination of the upper lookout, providing the easiest access, the middle lookout, and the lower lookout, which involves many more stairs. The upper lookout gives the best views across the valley, while the middle lookout gives similar scenic views. The lower lookout, however, has great views of the cliffs around the Grose Valley from a unique perspective. Let us begin by acknowledging the Dharug & Gundungurra people, Traditional Custodians of the land on which we travel today, and pay our respects to their Elders past and present.



Class 4 of 6

Rough track, where fallen trees and other obstacles are likely

**Quality of track**

Rough track, where fallen trees and other obstacles are likely (4/6)

**Gradient**

Very steep (4/6)

**Signage**

Minimal directional signs (4/6)

**Infrastructure**

Limited facilities (such as cliffs not fenced, significant creeks not bridged) (4/6)

**Experience Required**

Some bushwalking experience recommended (3/6)

**Weather**

Weather generally has little impact on safety (1/6)

**Getting to the start:** From Great Western Highway, A32

- Turn on to Hat Hill Road then drive for 4.7 km
- Turn right onto Pulpit Rock Road and drive for another 610 m
- Turn left onto Pulpit Rock Road and drive for another 320 m

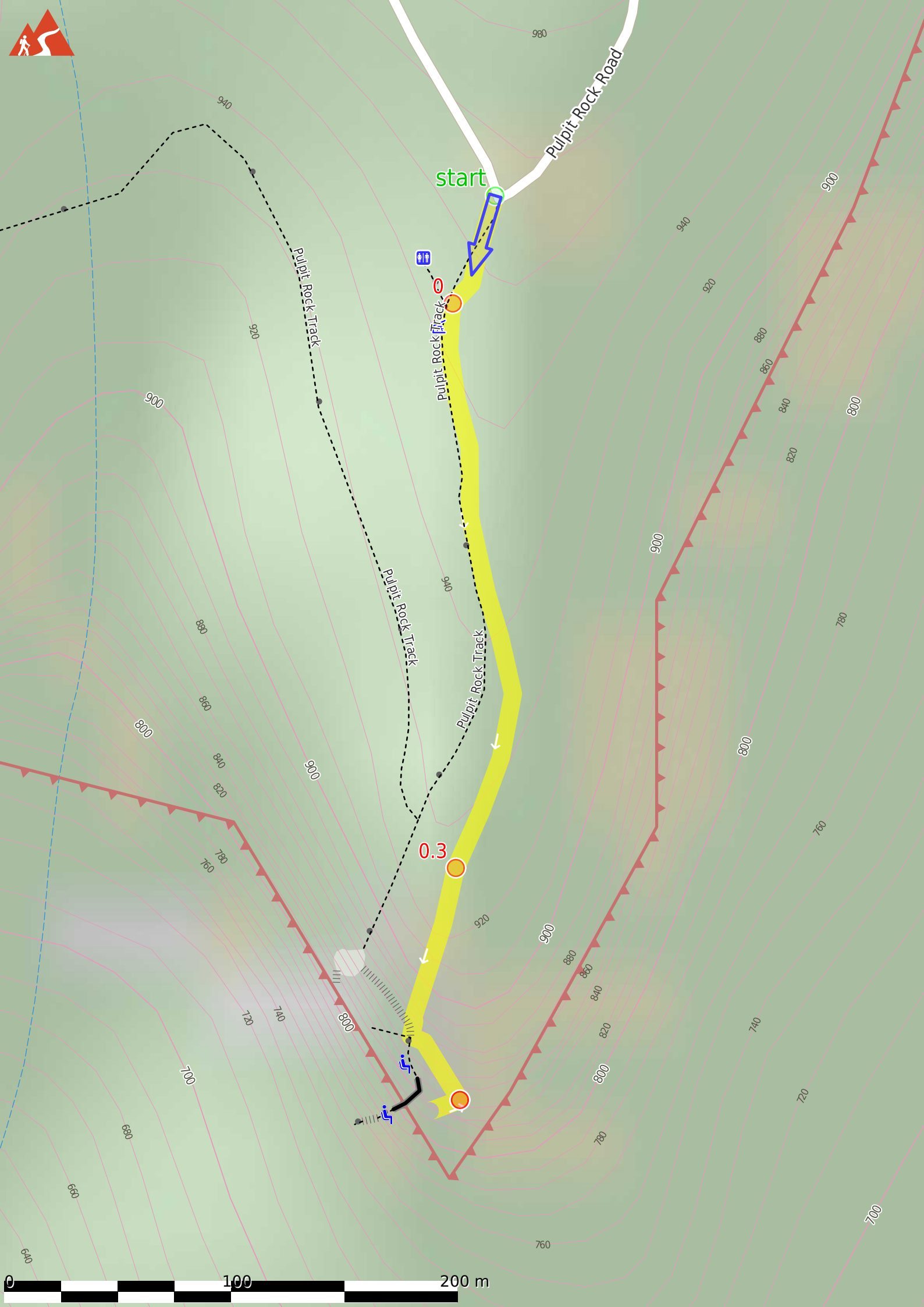
## Before you start any journey ensure you;

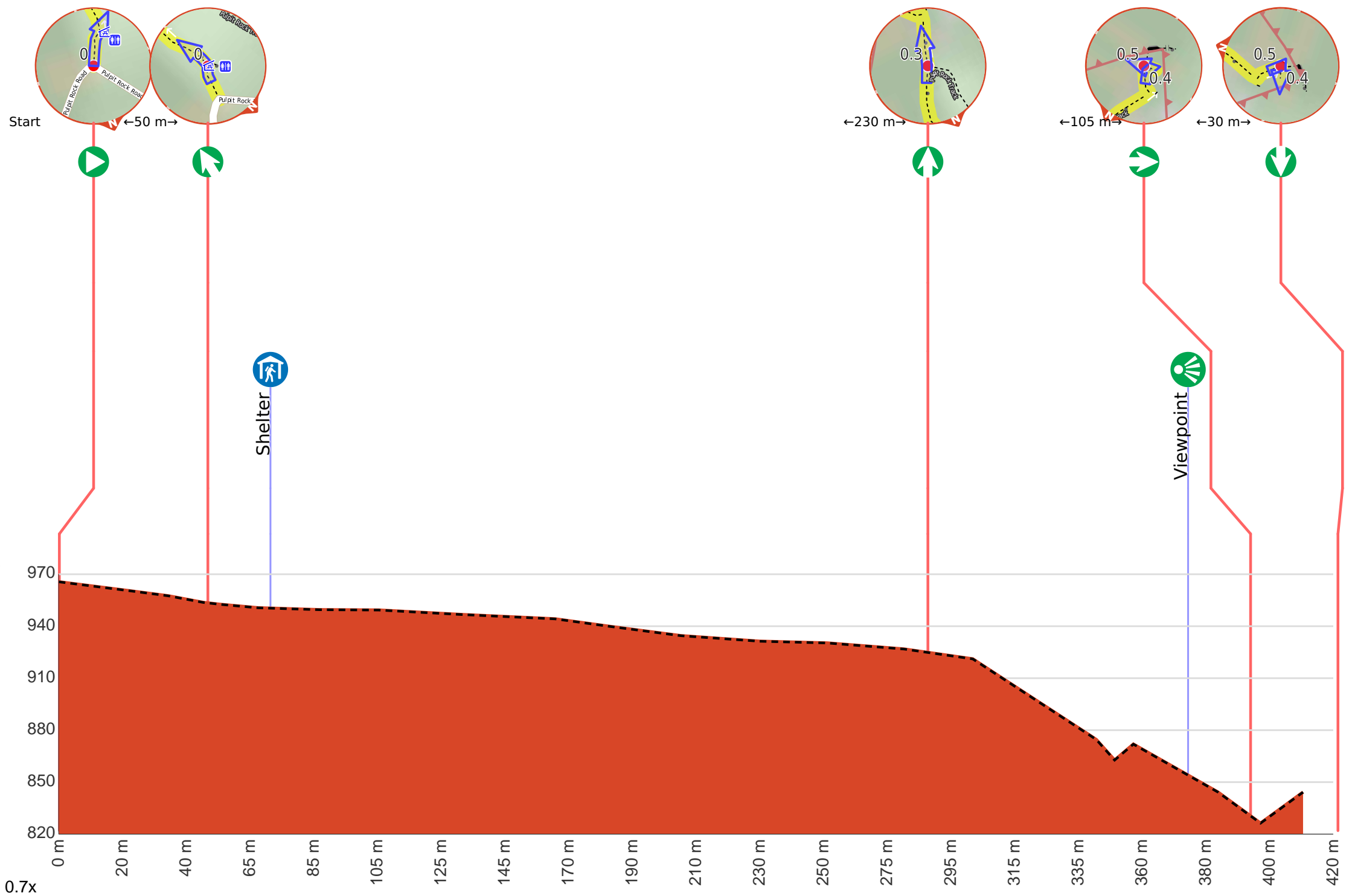
- Tell someone you trust where you are going and what to do if you are late returning
- Have adequate equipment, supplies, skills & knowledge to undertake this journey safely
- Consider weather forecasts, park/track closures & fire dangers
- Can respond to emergencies & call for help at any point
- Are healthy and fit enough for this journey

If not, change plans and stay safe. It is okay to delay and ask people for help.

Share  
[Bushwalk.com](https://bushwalk.com/j/EH95FQ)  
[/j/EH95FQ](https://bushwalk.com/j/EH95FQ)







**Getting started:** From the car park, the walk follows the sign to 'Pulpit Rock Lookout', down the stairs from the car park. The track continues down to a shelter and toilet, and then steeply heads down another flight of stairs, before flattening out and then descending more stairs to the signposted intersection.

From the intersection, this walk goes down the stairs, following the sign to 'Pulpit Rock'. The track heads down the hill to a flat area with awesome views over the Grose Valley.



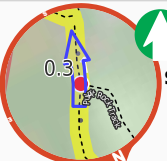
**Start.**



After another 50 m **veer left.**



After another 20 m pass the shelter (7 m on your right).



After another 210 m **continue straight.**



After another 85 m come to the "Pulpit Rock Upper Lookout" (15 m on your right).



After another 20 m **turn right.**



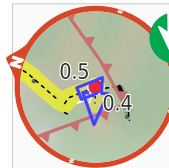
After another 30 m come to "Pulpit Rock Lookout".



Pulpit Rock Lookout, Blue Mountains National Park, looks over the Grose Valley and back towards Blackheath, with Bridal Veil Falls and the Govetts Leap cliff edge in view. The lookout has many levels with the uppermost lookout having the easiest access.



A seat.



Turn around here and retrace the main route for 410 m to get back to the start.