



Saltwater Creek to Bittangabee Bay

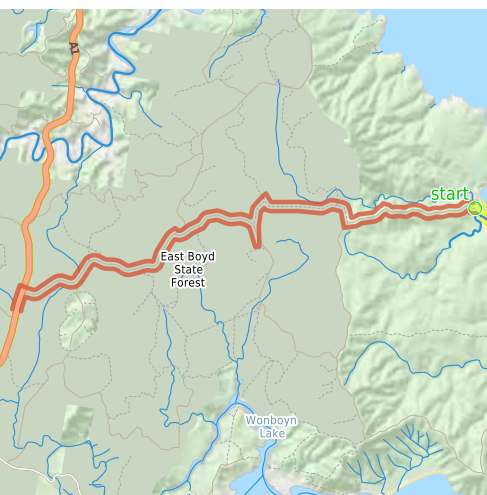
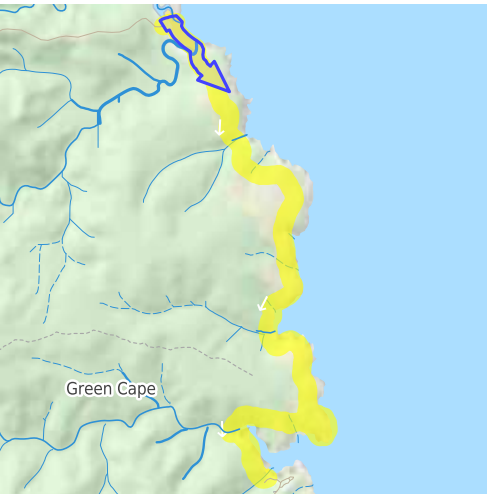
(Yuin Country)

3 h to 3 h 30 min

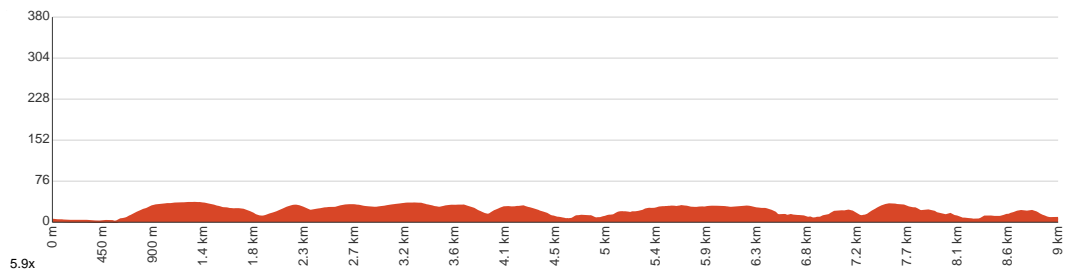
9 km
One way

↑ 194 m
↓ 191 m

4
Hard track



This walk follows the second main section of the Light to Light walk. The walk joins the two main camping areas of Ben Boyd National Park, by walking along the coast from Saltwater Creek to Bittangabee Bay. The walk explores a few bays, beaches and stunning rock formations on its journey. About half this walk is through open heath or grass lands, allowing plenty of great views out to sea and down the coast. Parts of the walk pass through the taller melaleuca forests providing some shade and interest in the diverse flora of the coast environment. Let us begin by acknowledging the Yuin people, Traditional Custodians of the land on which we travel today, and pay our respects to their Elders past and present.



Class 4 of 6
Rough track, where fallen trees and other obstacles are likely

Quality of track	Rough track, where fallen trees and other obstacles are likely (4/6)
Gradient	Very steep (4/6)
Signage	Minimal directional signs (4/6)
Infrastructure	Limited facilities (such as cliffs not fenced, significant creeks not bridged) (4/6)
Experience Required	No experience required (1/6)
Weather	Storms may impact on navigation and safety (3/6)

Getting to the start: From Princes Highway, A1

- Turn on to Edrom Road then drive for 5.7 km
- Turn right onto Green Cape Road and drive for another 2.7 km
- Turn sharp left and drive for another 910 m
- Turn right onto Duck Hole Road and drive for another 2.9 km
- Turn left onto Saltwater Road and drive for another 4.1 km

Before you start any journey ensure you;

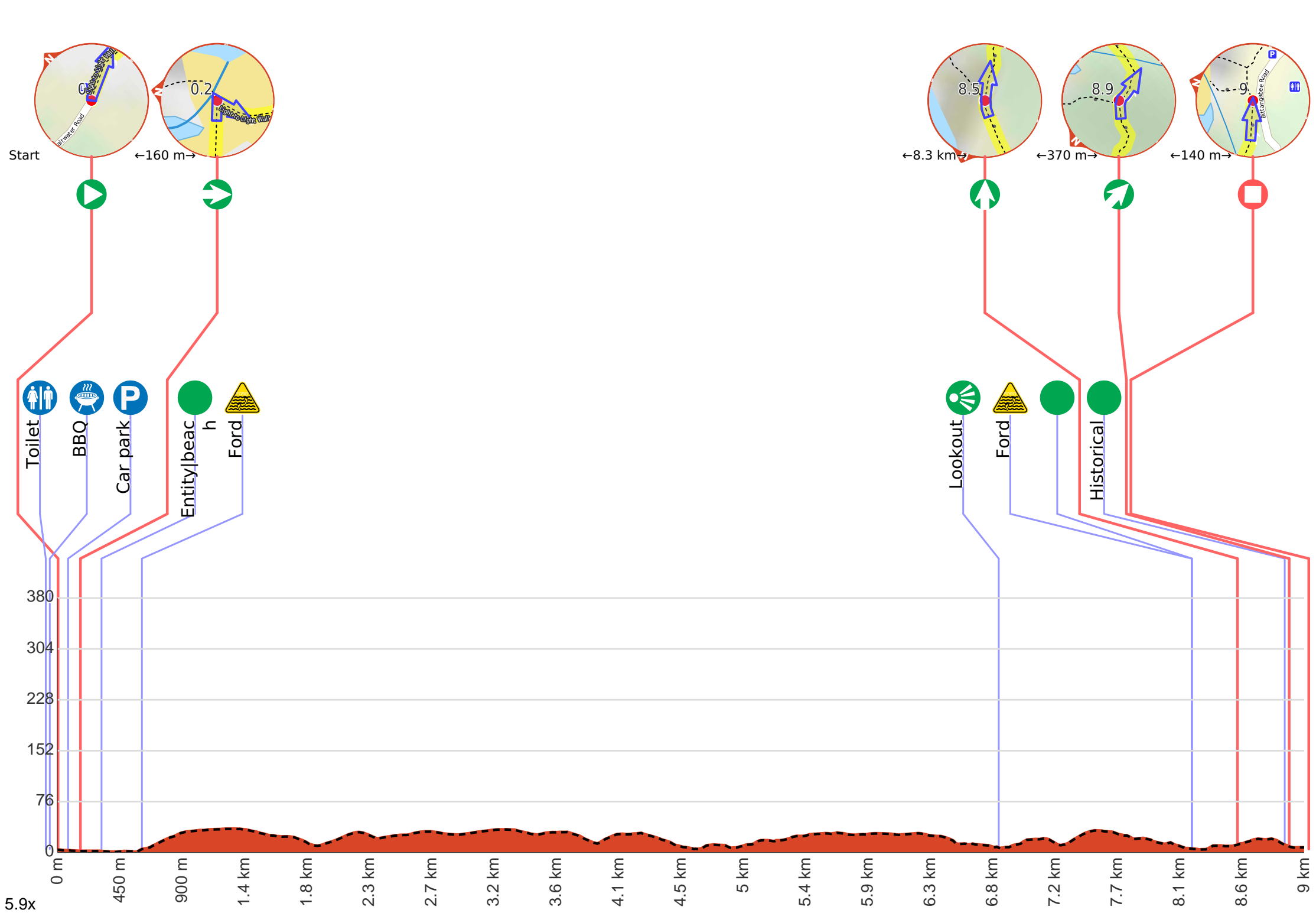
- Tell someone you trust where you are going and what to do if you are late returning
- Have adequate equipment, supplies, skills & knowledge to undertake this journey safely
- Consider weather forecasts, park/track closures & fire dangers
- Can respond to emergencies & call for help at any point
- Are healthy and fit enough for this journey

If not, change plans and stay safe. It is okay to delay and ask people for help.

Share
[Bushwalk.com
/DJTRNL](https://bushwalk.com.au/DJTRNL)







Getting started: From the information signs at Saltwater Creek camping area, the walk heads through the 'Day use' parking area to the far left corner. The track then follows the track-marker through the fenced area and onto the beach between the creek and ocean. The track continues towards the bush on the other side, where there is a signposted intersection.



Start.



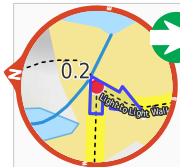
There is a toilet (about 95 m back from the start).



There is a BBQ (about 65 m back from the start).



After 130 m pass the car park (20 m on your left).



After another 90 m **turn right**, to head along Light to Light Walk.



After another 150 m find the "Saltwater Creek Beach" (on your left).



Saltwater Creek meets the South Pacific Ocean at a beautiful white sand beach in Ben Boyd National park. The beach looks north-east and has a rock shelf at either end. The wide Saltwater Creek forms a lagoon at the northern end, popular for swimming. Woodburn Creek also forms a lagoon on the southern end of the beach. Both creeks have a brown colouration from the tea tree, that forms a beautiful contrast with the white sand and blue ocean. The back of the beach is heavily wooded, providing some shade, and is home to the Saltwater Creek campsite. The beach can be accessed from the Saltwater Creek campsite at the end of the access road from Duck Hole Road.



After another 290 m cross the ford.



After another 6.2 km find the "Black cliffs" (20 m on your left).



The black cliffs of Ben Boyd National Park provide a great vantage point. The headland on the north side of Bittangabee Bay has a fairly large clearing on a rock platform, high above the ocean. There are great views out to sea and into the mouth of Bittangabee Bay. There are no fences or facilities at this informal lookout. Being dark in colour, this rock platform can get very uncomfortable on hot days - trees on the south side provide some respite with shade. The rock slopes into the sea on the south side, but would be too dangerous for swimming.



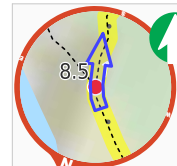
After another 1.4 km cross the ford.



Then find the "Bittangabee Creek" (8 m on your left).



Bittangabee Creek is a small creek feeding Bittangabee Bay in Ben Boyd National Park. The creek enters the bay and is crossed by the Light to Light track about 800m north-west of Bittangabee Campsite. The creek provides a quiet place for people to paddle and relax.



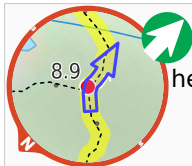
After another 325 m **continue straight**.



After another 340 m find the "Imlay House" (on your left).



Imlay House ruins still show the foundations of a house built by the Imlay brothers in 1844. The ruins are found in Bittangabee Bay in Ben Boyd National Park, along the Light to Light track. The house was to be a station for the Imlay family to further their grazing and whaling in the area. It appears the stone house was never completed, with the brothers dying in 1846 (George) and 1847 (Alexander). Soon after the Imlay brothers died, Benjamin Boyd began using the bay for his own whaling company in 1848.



After another 30 m **veer right**, to head along Light to Light Walk.



After another 140 m come to the end.



About 15 m past the end is "Bittangabee Bay Picnic Area".



Bittangabee Bay Picnic Area is near Bittangabee Bay and camp area in Ben Boyd National Park. The picnic area is a day-use only area with a few picnic tables, an electric BBQ and a pit toilet. There is a reasonable amount of natural shade, and is close to a car park. There is short walk to the beach and ruins at Bittangabee Bay. The picnic area is well signposted on the loop road near the Bittangabee camping area.



About 70 m past the end is a car park.



About 70 m past the end is a toilet.



About 120 m past the end is "Bittangabee Bay Beach".



Bittangabee Bay Beach, Ben Boyd National Park, is a small beach at the south-western corner of the bay. The beach can be accessed by a short walk from Bittangabee picnic area in Ben Boyd National Park. The yellow sand beach has a small creek and lagoon behind. The beach also has rock platforms at each end and is fairly well-protected from swells, being tucked away in the bay. The historic storehouse is visible on the shore to the right.