




Euroka to Red Hands Cave

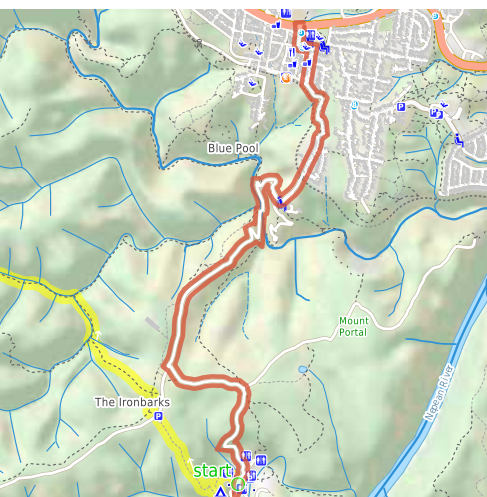
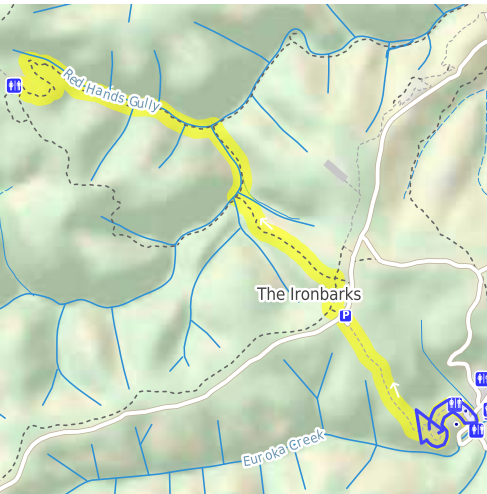
(Dharug & Gundungurra Country)

 1 h 45 min to 3 h 30 min

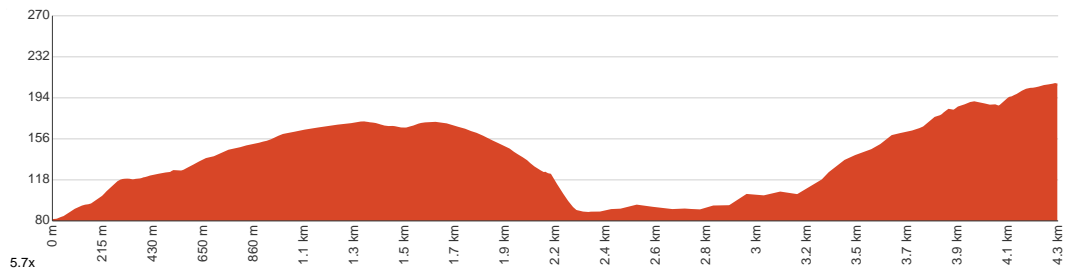

4.3 km
One way


↑ 231 m
↓ 105 m


Very challenging



The walk to Red Hands Caves is quite a heritage walk, with both Indigenous art and grinding grooves to see. The walk leaves Euroka camping area and heads down through the valleys, passing the heritage areas. The walk finishes at Red Hands Cave picnic area, a perfect spot for lunch. As an alternative, you could retrace your footsteps back to Euroka Camping area to make this a return walk. Let us begin by acknowledging the Dharug & Gundungurra people, Traditional Custodians of the land on which we travel today, and pay our respects to their Elders past and present.



Class 5 of 6
Rough unclear track

Quality of track	Rough track, where fallen trees and other obstacles are likely (4/6)
Gradient	Very steep (4/6)
Signage	No directional signs (5/6)
Infrastructure	No facilities provided (5/6)
Experience Required	Moderate level of bushwalking experience recommended (4/6)
Weather	Storms may impact on navigation and safety (3/6)

Getting to the start: From Great Western Highway, A32

- Turn on to Ross Street then drive for 275 m
- Turn right onto Euroka Road and drive for another 2.5 km
- Turn left onto The Oaks Trail and drive for another 1.5 km
- Turn left onto Euroka Road and drive for another 1.6 km
- Turn right onto Bennetts Ridge Trail and drive for another 105 m
- Turn sharp right and drive for another 15 m

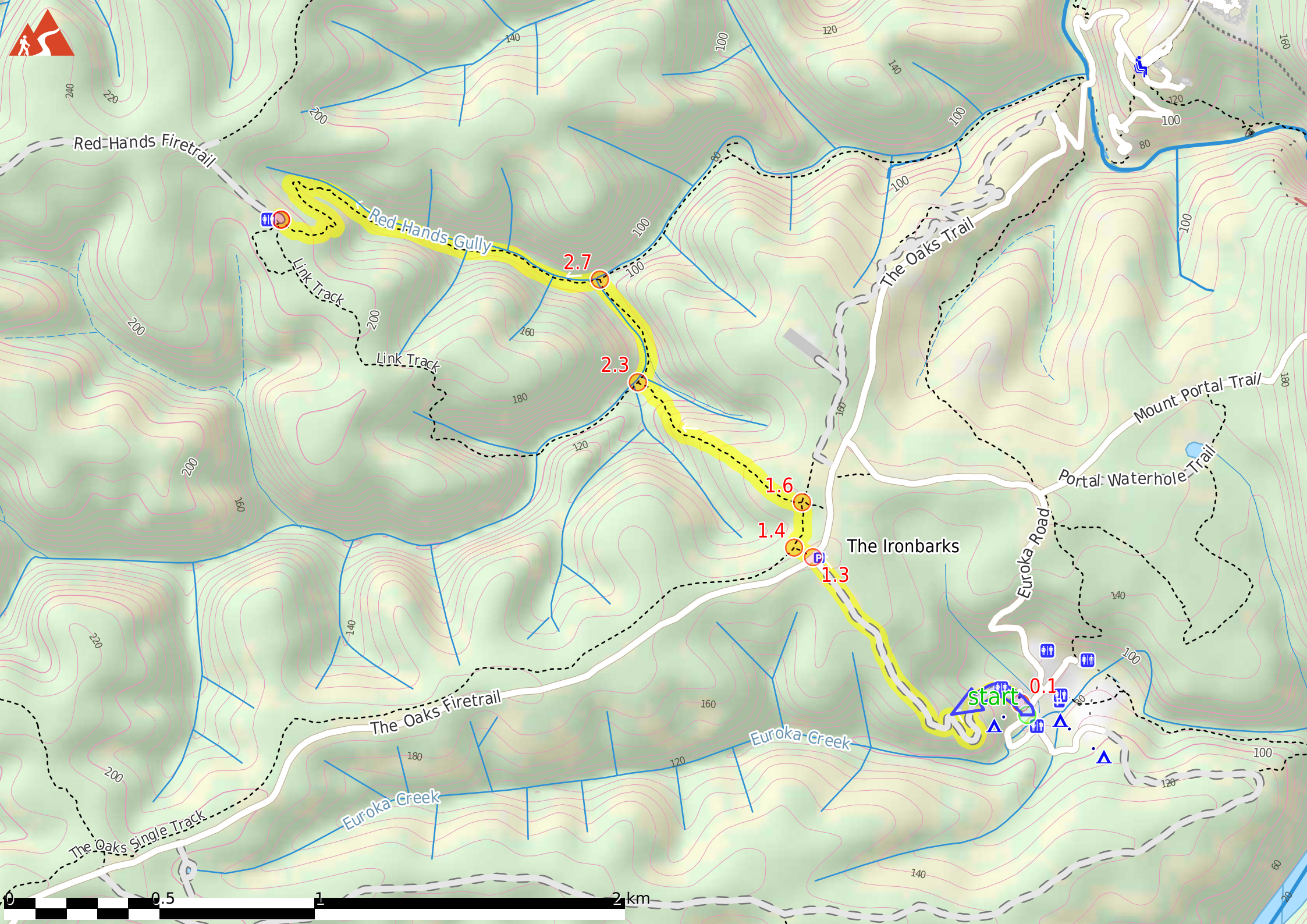
Before you start any journey ensure you;

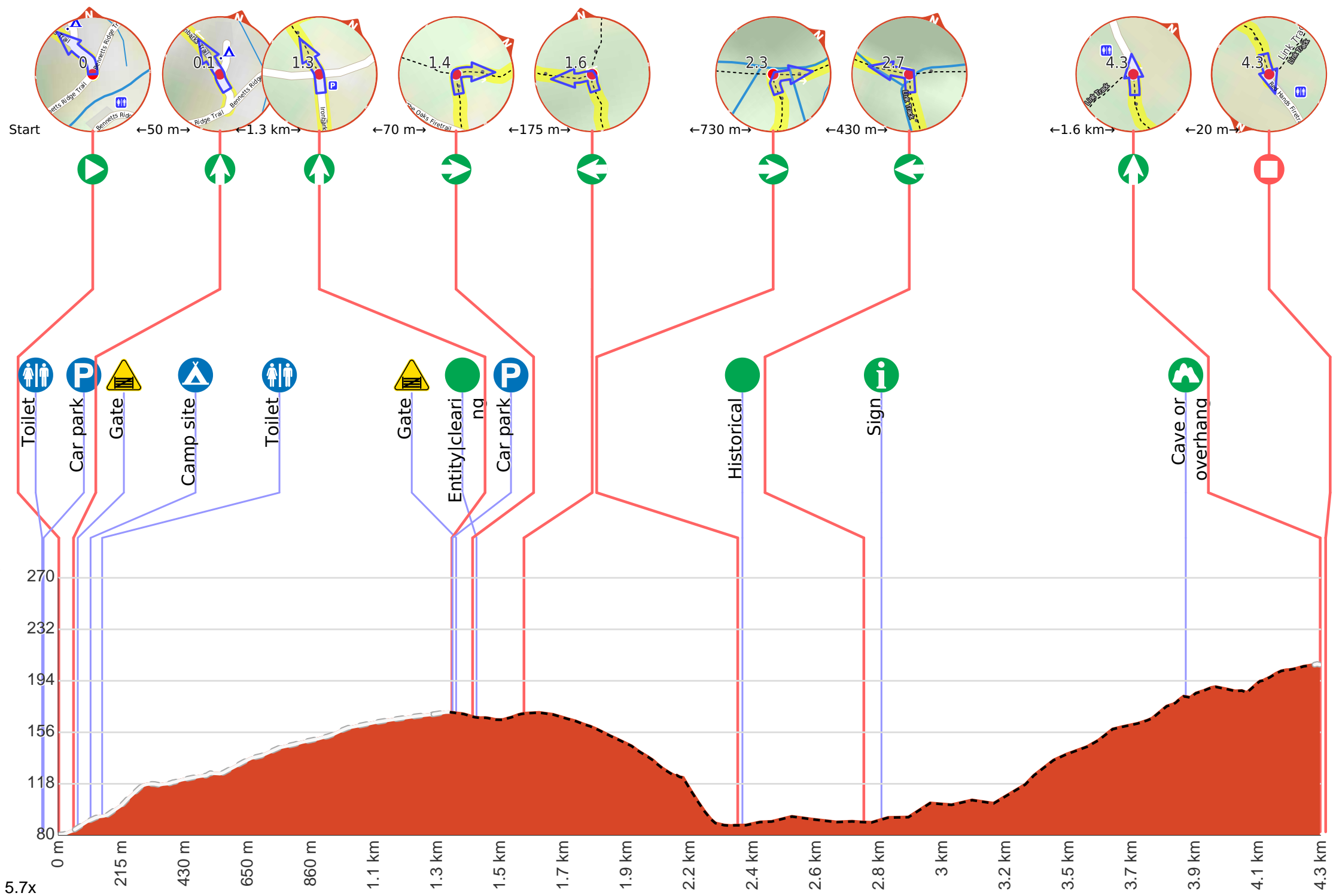
- Tell someone you trust where you are going and what to do if you are late returning
- Have adequate equipment, supplies, skills & knowledge to undertake this journey safely
- Consider weather forecasts, park/track closures & fire dangers
- Can respond to emergencies & call for help at any point
- Are healthy and fit enough for this journey

If not, change plans and stay safe. It is okay to delay and ask people for help.

Share
[Bushwalk.com](https://bushwalk.com/j/C393XH)
[/j/C393XH](https://bushwalk.com/j/C393XH)







Getting started: From the intersection below Nioka, this walk heads up the hill and around the locked gate. The track then passes the toilet and the 'no exit' sign. The walk then continues to follow this clear track as it heads uphill, away from the campsites. The management trail takes a few sharp bends and before long, the hill flattens out a little. As the track meanders up the hill, it widens into a clearer management trail. Just before the Oaks Fire Trail, this walk steps over the locked gate into the Ironbark Picnic Area.



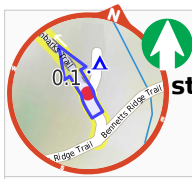
Start.



There is a toilet (about 60 m back from the start).



There is a car park (about 55 m back from the start).



After another 100 m **continue straight**, to head along Ironbarks Trail.



After another 15 m head through/around the gate.



After another 45 m come to the "Redgum Campsite" (15 m on your right).

W: www.nationalparks.nsw.gov.au

There is a fee to use this campsite.



After another 40 m pass the toilet (8 m on your right).



After another 1.2 km head through/around the gate.



After another 70 m find the "Ironbark Picnic Area" (15 m on your right).



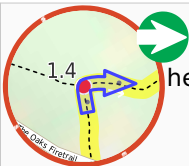
Ironbark Picnic Area is a basic picnic area on the Oaks Fire Trail, about 450m south of Euroka Rd. The picnic area has a low bench that acts as both a table and seat, and there is also a wood-fired barbecue provided. The picnic area is at the top of a gated management trail, which leads down to campsites at Euroka. There are plenty of car parking spaces provided and it is a fairly popular starting point for people cycling the Oaks Cycleway.



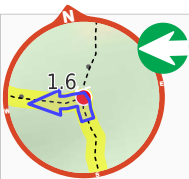
At the intersection of The Oaks Firetrail & Ironbarks Trail **continue straight** (a walking track).



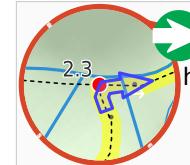
Then pass the car park (20 m on your right).



After another 70 m **turn right**, to head along The Oaks Single Track.



After another 175 m **turn left**.



After another 730 m **turn right**, to head along Link Track.



After another 15 m find the "Axe Grinding Grooves" (6 m on your left).



These well-defined axe grinding grooves are found on the sandstone bed of Camp Fire Creek. The grooves were formed by Aboriginal people when sharpening axes (or forming axe blanks). Rubbing the axe blanks would sharpen the stone into a more useful tool, and the process would also wear the sandstone, leaving these markings. These sites are typically found near water, as the water was added to make the stone more abrasive. Sites like this will fade in time due to erosion of the sandstone - please help them last as long as possible by not walking on, or close to the grooves.



After another 410 m (at the intersection of Campfire Creek Track & Link Track) **turn left**, to head along Campfire Creek Track.



After another 60 m pass the sign (on your left).



After another 1 km find the "Red Hands Cave" (on your left).



Red Hands Cave, in the Glenbrook area of the Blue Mountains National Park, is found near the end of Red Hands Cave fire trail. The cave has quite a few hand stencils and prints of various colours (including red). The cave is well protected, with a perspex and steel cage. There are some information signs and some artifacts to help visitors learn more about the people who made these prints over 1600 years ago. In 1913, when searching for a lost child, this cave was found by Europeans and is now protected.



About 45 m past the end is a toilet.



The end.



After another 460 m (at the intersection of Red Hands Firetrail & Red Hands Cave Walking Track) **continue straight**, to head along Red Hands Firetrail (a vehicle track).



After another 20 m come to "Red Hands Cave Picnic Area".



Red Hands Cave Picnic Area is found at the end of the Red Hands Cave Fire Trail in the Glenbrook area of the Blue Mountains National Park. The small picnic area is next to the car park and has a couple of platforms (to act as both a table and seat) as well as a fire place and toilet. The toilet itself is wheelchair accessible, but access to the toilet is over moderately rough terrain. A good spot to rest when exploring Red Hands Cave.