



Braeside Walk

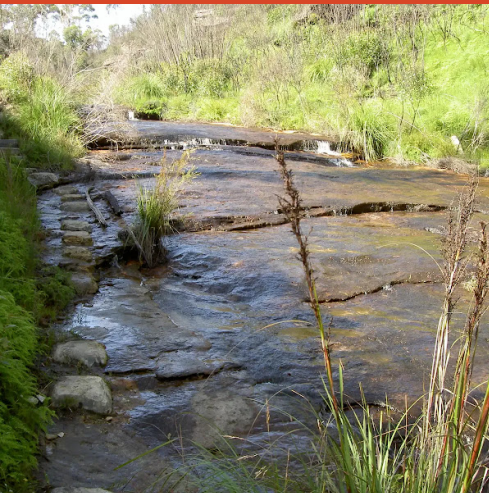
(Dharug & Gundungurra Country)

 50 min to 1 h

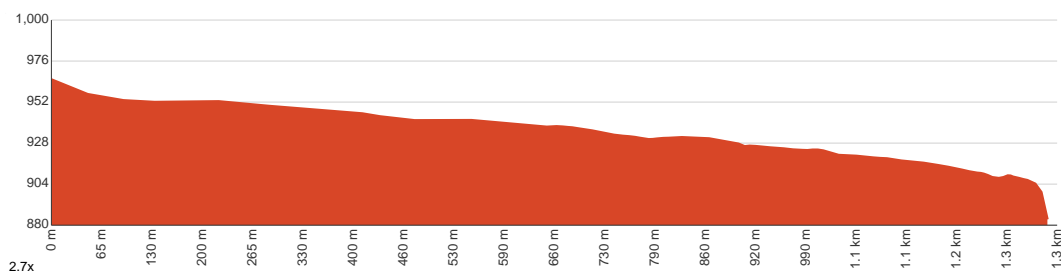

2.6 km
Return


↑ 90 m
↓ 90 m


Hard track



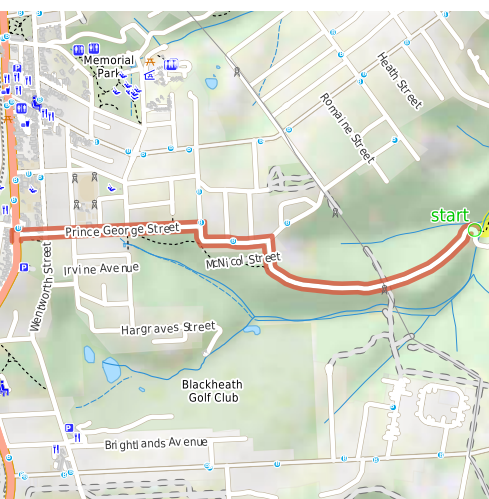
The Braeside Walk is an excellent connecting trail to the Cliff Top walk, between Evans and Govetts Lookouts. The track has its own quiet picnic area, which could make a nice spot for lunch along this creekside walk. The track builds up to its climax at Barrows Lookout, overlooking the Grose Valley and Bridal Veil Falls, before returning along the same track. Let us begin by acknowledging the Dharug & Gundungurra people, Traditional Custodians of the land on which we travel today, and pay our respects to their Elders past and present.



Class 4 of 6 Rough track, where fallen trees and other obstacles are likely	
Quality of track	Rough track, where fallen trees and other obstacles are likely (4/6)
Gradient	Very steep (4/6)
Signage	Directional signs along the way (3/6)
Infrastructure	Limited facilities, not all cliffs are fenced (3/6)
Experience Required	No experience required (1/6)
Weather	Weather generally has little impact on safety (1/6)

Getting to the start: From Great Western Highway, A32

- Turn on to Prince George Street then drive for 780 m
- Turn right onto Boreas Street and drive for another 340 m
- Turn right onto Braeside Road and drive for another 1.1 km



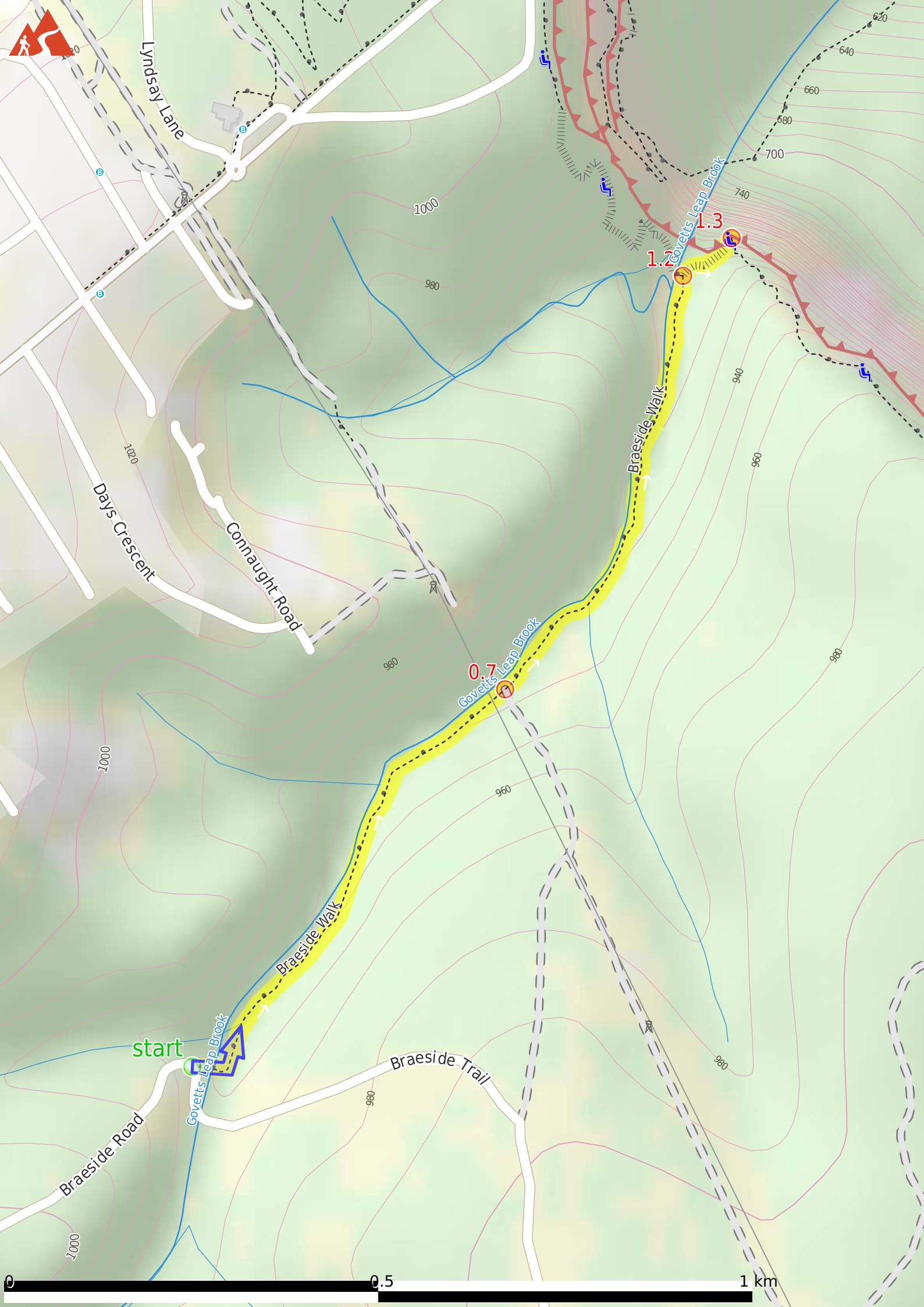
Before you start any journey ensure you;

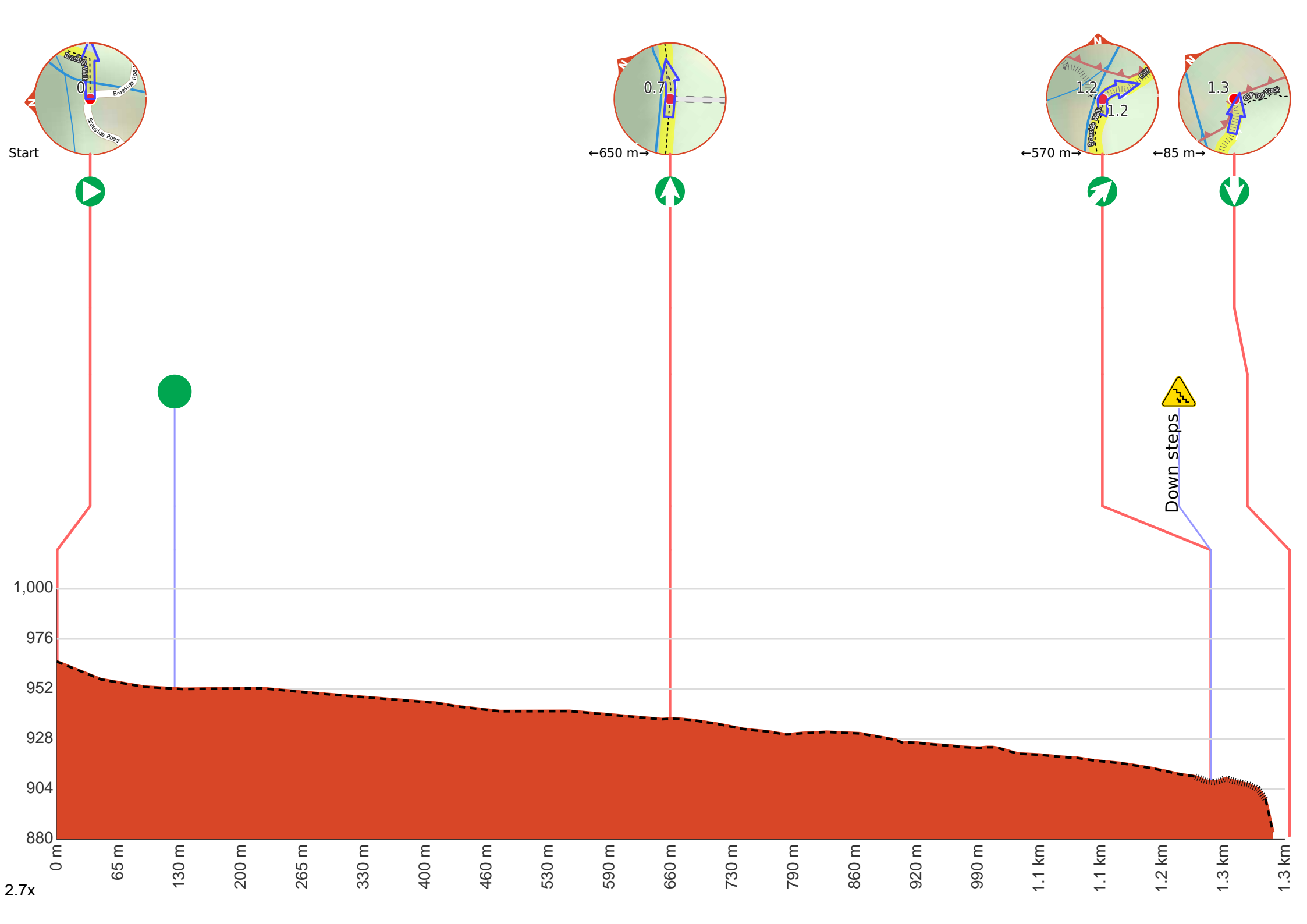
- Tell someone you trust where you are going and what to do if you are late returning
- Have adequate equipment, supplies, skills & knowledge to undertake this journey safely
- Consider weather forecasts, park/track closures & fire dangers
- Can respond to emergencies & call for help at any point
- Are healthy and fit enough for this journey

If not, change plans and stay safe. It is okay to delay and ask people for help.

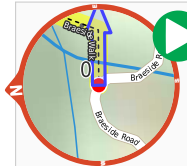
Share
[Bushwalk.com](https://bushwalk.com/j/9KVRZG)
[/j/9KVRZG](https://bushwalk.com/j/9KVRZG)







Getting started: From the signposted intersection, this walk follows the scratched arrow, next to the 'Braeside Walk' sign, down the steps to traverse the stepping stones across the creek. The walk winds left through the ferns, to a picnic table and barbeque above the weir's brick wall, lower down the stream.

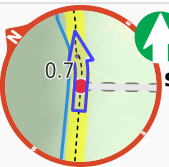


Start.

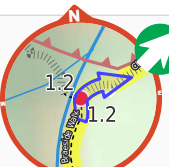
After 125 m find the "Braeside Picnic Area" (10 m on your right).



Braeside Picnic Area, Blue Mountains National Park, is a small picnic area on the southern end of the Braeside walking track. The picnic area has a bench table and stone barbeque. The picnic area is situated next to a small weir and waterfall amongst the ferns.



After another 530 m **continue straight.**



After another 570 m **veer right.**



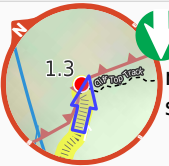
Then head down the earthen steps (about 75 m long)



After another 8 m come to "Barrow Lookout".



Barrow Lookout, Blue Mountains National Park, looks down to Govetts Leap falls and across the Grose Valley. The lookout is fenced and has a bench seat to rest.



Turn around here and retrace the main route for 1.3 km to get back to the start.



A seat., has a backrest.