



Pulpit Rock Car Park to Top Lookout

(Dharug & Gundungurra Country)

 30 min to 40 min

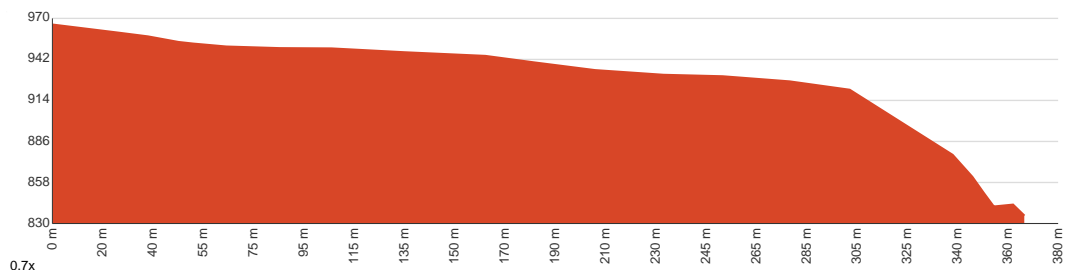
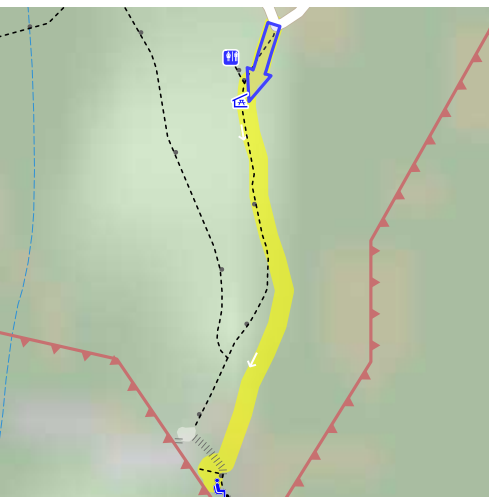

730 m
Return


↑ 133 m
↓ 133 m


Moderate track



This walk follows a distinct track to the top lookout, the easiest of the three lookouts at Pulpit Rocks to visit. The track passes a picnic shelter on the way down from the car park. The lookout has stunning views across the Grose valley, and down onto Pulpit Rock. Let us begin by acknowledging the Dharug & Gundungurra people, Traditional Custodians of the land on which we travel today, and pay our respects to their Elders past and present.



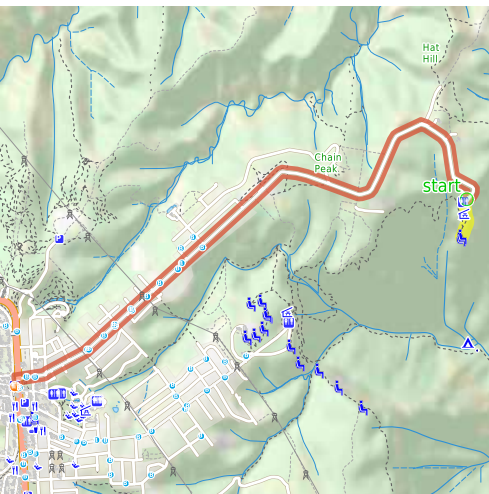
Class 3 of 6

Formed track, with some branches and other obstacles

Quality of track	Formed track, with some branches and other obstacles (3/6)
Gradient	Short steep hills (3/6)
Signage	Directional signs along the way (3/6)
Infrastructure	Limited facilities, not all cliffs are fenced (3/6)
Experience Required	No experience required (1/6)
Weather	Weather generally has little impact on safety (1/6)

Getting to the start: From Great Western Highway, A32

- Turn on to Hat Hill Road then drive for 4.7 km
- Turn right onto Pulpit Rock Road and drive for another 610 m
- Turn left onto Pulpit Rock Road and drive for another 320 m



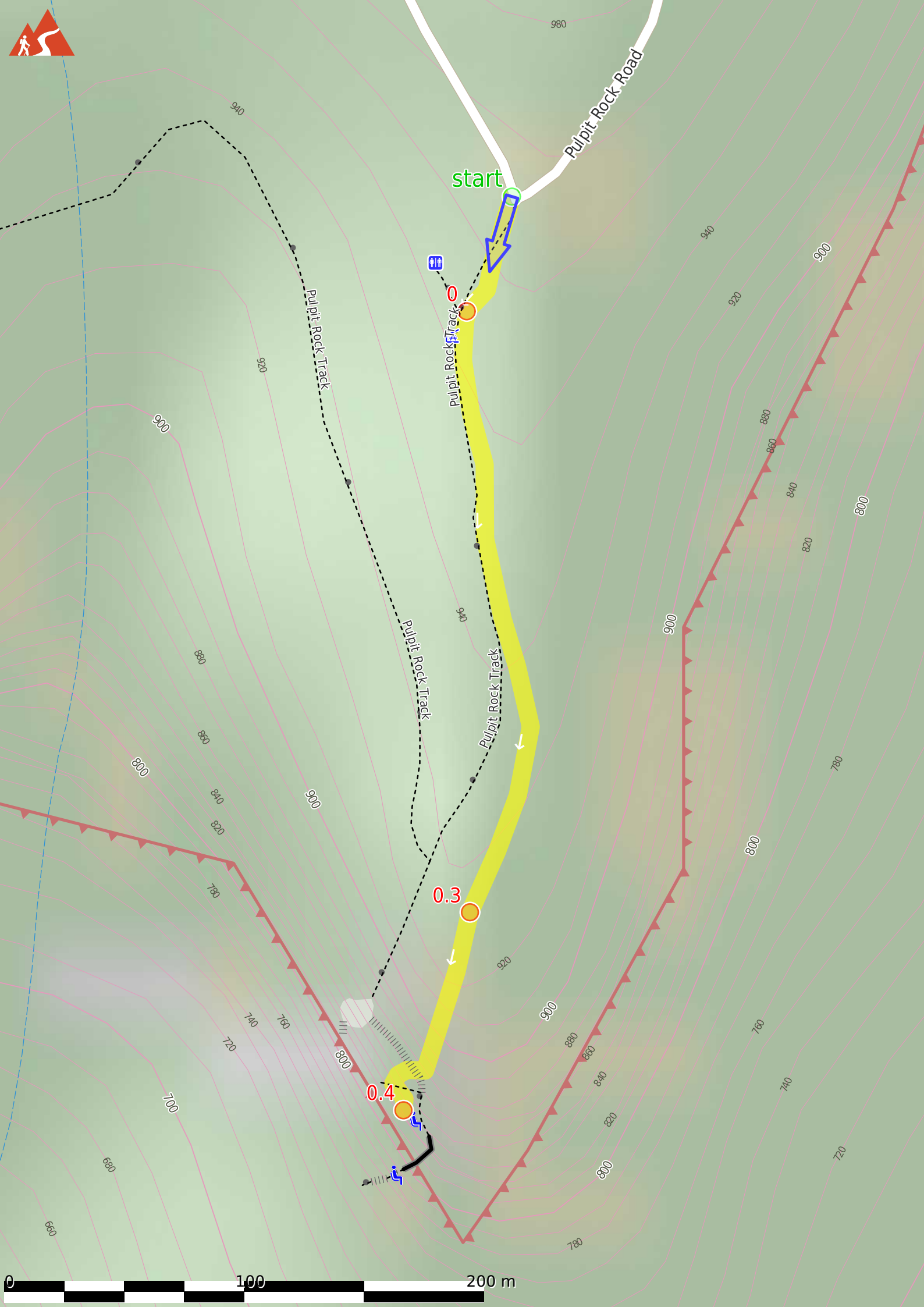
Before you start any journey ensure you;

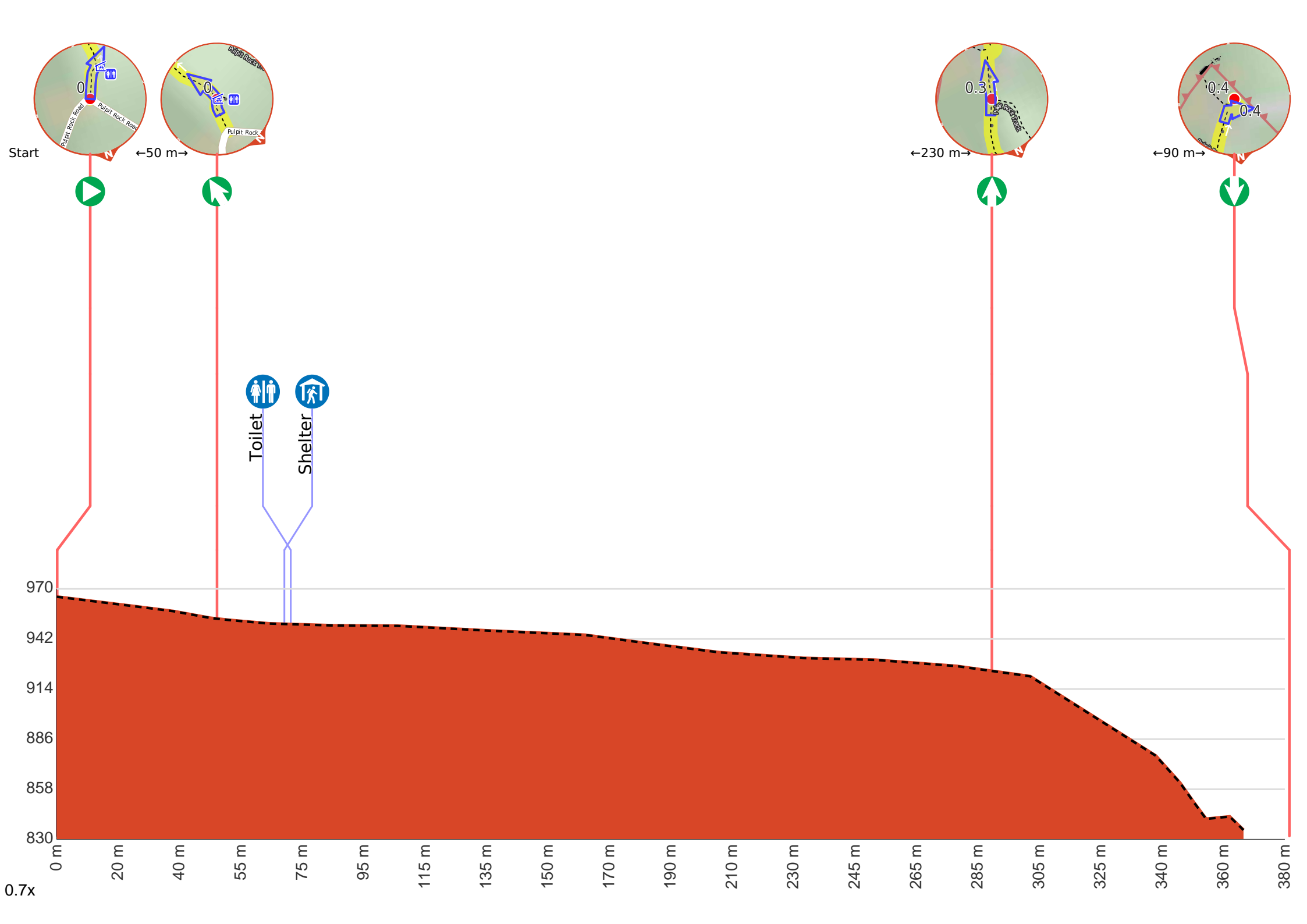
- Tell someone you trust where you are going and what to do if you are late returning
- Have adequate equipment, supplies, skills & knowledge to undertake this journey safely
- Consider weather forecasts, park/track closures & fire dangers
- Can respond to emergencies & call for help at any point
- Are healthy and fit enough for this journey

If not, change plans and stay safe. It is okay to delay and ask people for help.

Share
[Bushwalk.com](https://bushwalk.com/j/88KA5G)
[/j/88KA5G](https://bushwalk.com/j/88KA5G)







Getting started: From the car park, the walk follows the sign to 'Pulpit Rock Lookout', down the stairs from the car park. The track continues down to a shelter and toilet, and then steeply heads down another flight of stairs, before flattening out and then descending more stairs to the signposted intersection.

From the intersection, this walk goes down the stairs, following the sign to 'Pulpit Rock'. The track heads down the hill to a flat area with awesome views over the Grose Valley.



After another 90 m come to "Pulpit Rock Lookout".



Pulpit Rock Lookout, Blue Mountains National Park, looks over the Grose Valley and back towards Blackheath, with Bridal Veil Falls and the Govetts Leap cliff edge in view. The lookout has many levels with the uppermost lookout having the easiest access.



Start.



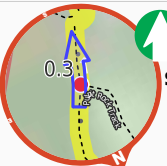
After another 50 m **veer left**.



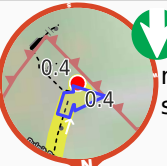
After another 20 m pass the toilet (25 m on your right).



Then pass the shelter (7 m on your right).



After another 210 m **continue straight**.



Turn around here and retrace the main route for 370 m to get back to the start.



"Pulpit Rock Upper Lookout".