



Blue Pool and Glenbrook Sandbar

(Dharug & Gundungurra Country)

1 h 15 min to 2 h 30 min

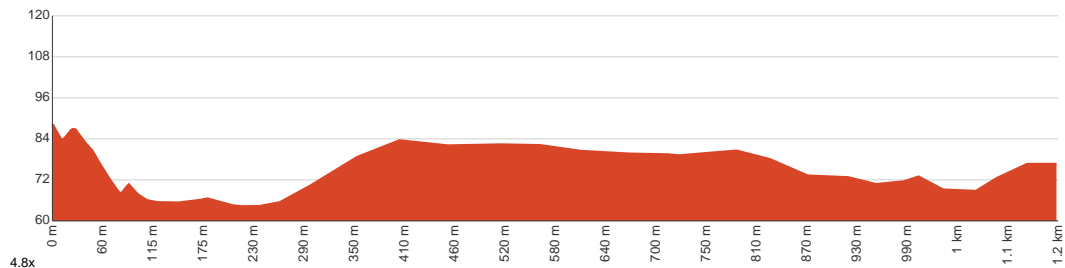
2.3 km
Return

↑ 88 m
↓ 88 m

4
Hard track



This enjoyable walk leads to the beautiful feature that is Blue Pool. This natural pool can appear an amazing colour, and can be quite popular with swimmers. If Blue Pool is too crowded for your liking, there is an optional sidetrip which heads further up the creek to Glenbrook sandbar. The sandbar offers a sandy beach at a nice stretch of creek, also a pleasant spot for a dip. Let us begin by acknowledging the Dharug & Gundungurra people, Traditional Custodians of the land on which we travel today, and pay our respects to their Elders past and present.



Class 4 of 6

Rough track, where fallen trees and other obstacles are likely

Quality of track

Rough track, where fallen trees and other obstacles are likely (4/6)

Gradient

Very steep (4/6)

Signage

Minimal directional signs (4/6)

Infrastructure

Limited facilities (such as cliffs not fenced, significant creeks not bridged) (4/6)

Experience Required

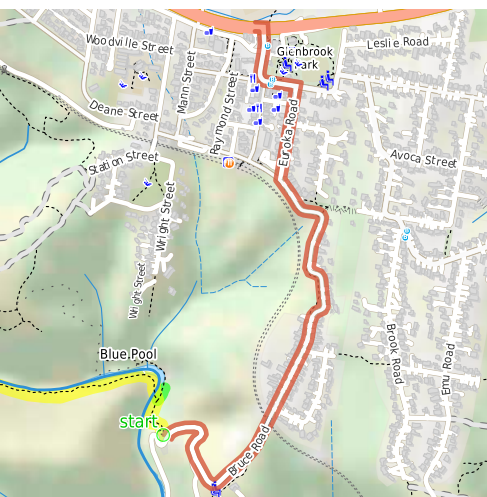
No experience required (1/6)

Weather

Weather generally has little impact on safety (1/6)

Getting to the start: From Great Western Highway, A32

- Turn on to Ross Street then drive for 285 m
- Turn right onto Euroka Road and drive for another 1.9 km



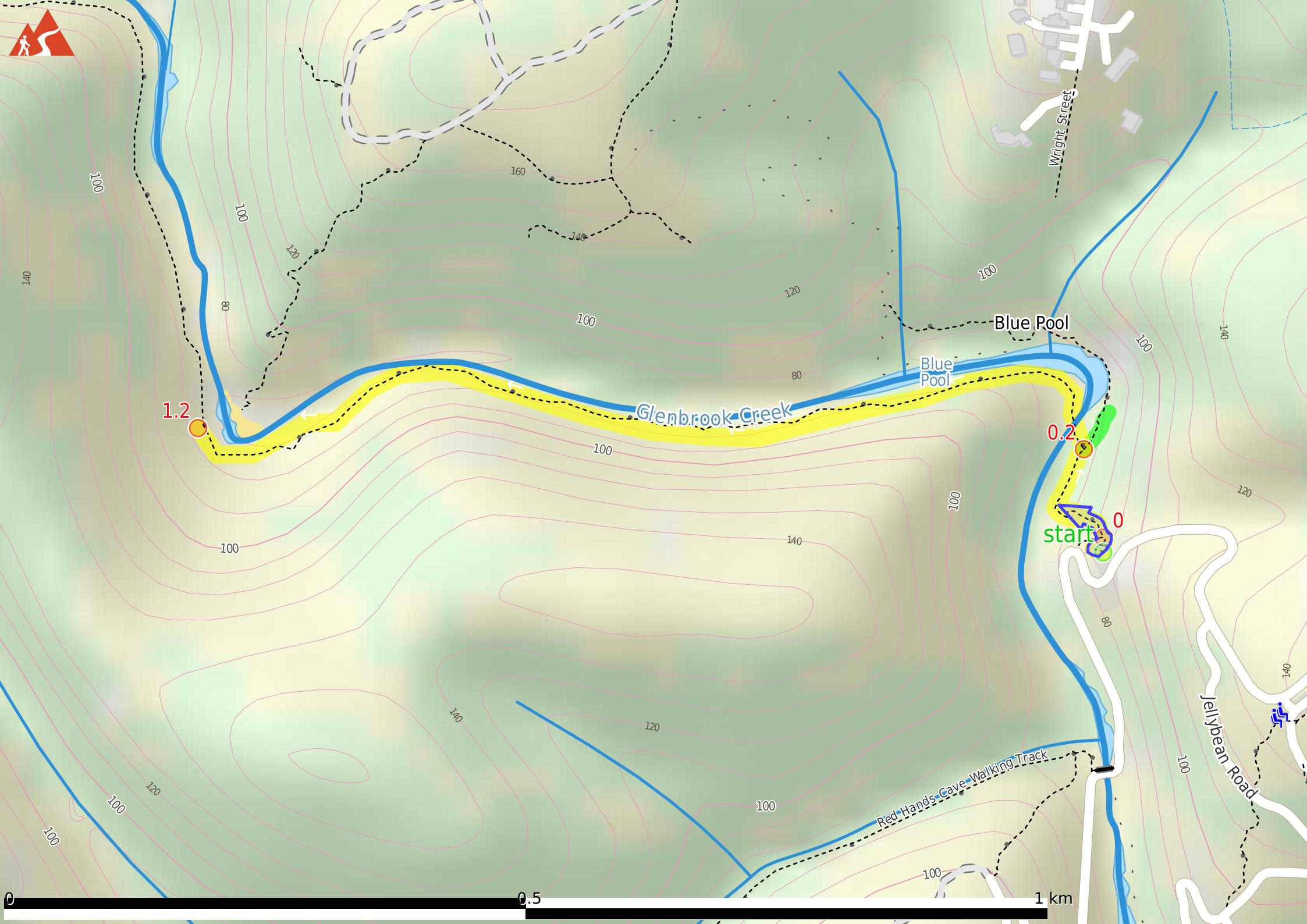
Before you start any journey ensure you;

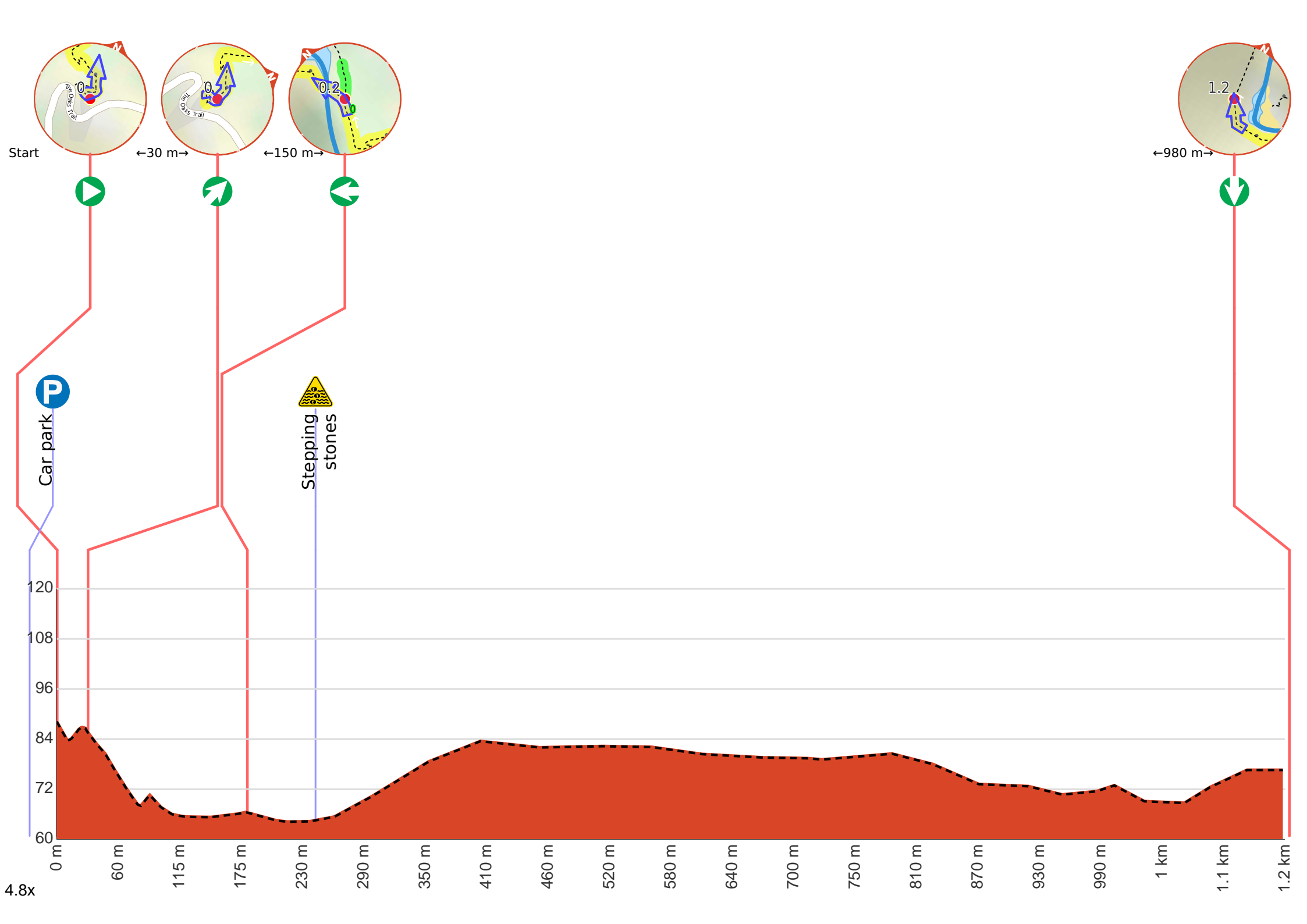
- Tell someone you trust where you are going and what to do if you are late returning
- Have adequate equipment, supplies, skills & knowledge to undertake this journey safely
- Consider weather forecasts, park/track closures & fire dangers
- Can respond to emergencies & call for help at any point
- Are healthy and fit enough for this journey

If not, change plans and stay safe. It is okay to delay and ask people for help.

Share
Bushwalk.com
/i/5V4I5G

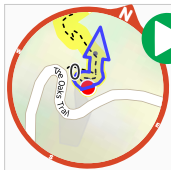






Getting started: From the car park, the walk heads away from the road, following the direction of the 'Blue Pool' sign down the bush track. The track winds down the hill and over a small footbridge, to an un-signposted intersection.

From the intersection, the walk heads down the hill, via many bush steps. The walk then continues, with the creek to the left of the track, to an un-signposted intersection (where another track continues along the base of the cliffs).



Start.

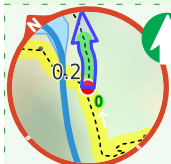


There is a car park (about 25 m back from the start).

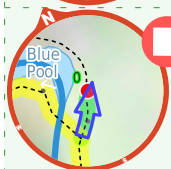


After another 55 m **veer right**.

Start of an optional side trip: An optional side trip to Blue Pool.



To start this optional side trip continue straight here. **Start.**



After another 45 m come to the end.



About 20 m past the end is "Blue Pool".



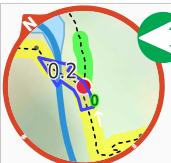
Blue Pool, Blue Mountains National Park, is named after the blue colour of the water. This appearance is caused by clay particles suspended in the water, which refract the light. This part of Glenbrook Creek is a popular swimming hole, but it is not patrolled.



Turn around and retrace your steps back the 45 m to the main route.



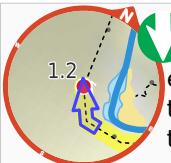
Back at the main route turn right and follow on from the 180 m waypoint.



After another 150 m **turn left**.



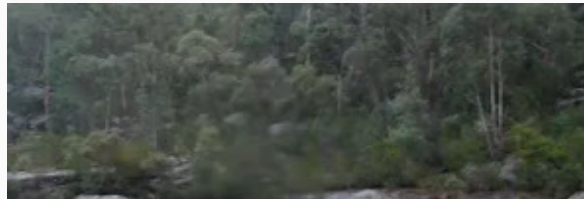
After another 65 m cross the stepping stones.



Continue another 920 m to find the end. Then turn around here and retrace the main route for 1.2 km to get back to the start.



About 30 m past the end is "Glenbrook Creek Sandbar".



The sandbar is an unofficially-named beach on the banks of Glenbrook Creek. The beach has a fantastic white colour and some height above the water - a great spot for to camp or enjoy lunch.