



Weston Creek Pond Circuit

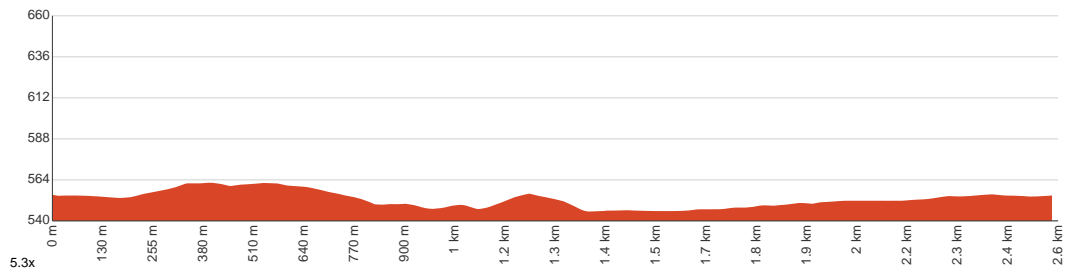
40 min to 1 h
20 min to 30 min

2.5 km
Circuit

↑ 34 m
↓ 34 m

2
Easy track

Starting from the car park at the end of Kirkpatrick Street, Weston, this walk takes you on a circuit around Weston Creek Pond via concrete tracks and dirt fire trails. A not-so-hidden gem in the city, Weston Creek Pond is convenient to reach and offers soothing views and opportunities for birdwatching without demanding much from you. You can take your kids and dogs with you as you stroll around the pond and view the city from different angles. The Telstra Tower will also catch your eyes as its sheer size and height will make it hard to miss. Horse riding is allowed on the track, so be careful and listen for the distinct sound of horseshoes at all times. Let us begin by acknowledging the Traditional Custodians of the land on which we travel today, and pay our respects to their Elders past and present.



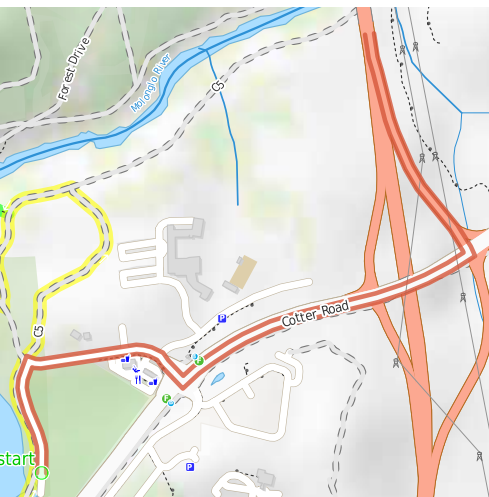
Class 2 of 6

Clear and well formed track or trail

Quality of track	Clear and well formed track or trail (2/6)
Gradient	Flat, no steps (1/6)
Signage	Clearly signposted (2/6)
Infrastructure	Generally useful facilities (such as fenced cliffs and seats) (2/6)
Experience Required	No experience required (2/6)
Weather	Weather generally has little impact on safety (2/6)

Getting to the start: From Tuggeranong Parkway

- Turn on to Cotter Road Offramp then drive for 450 m
- Keep right onto Cotter Road Offramp and drive for another 70 m
- Turn right onto Cotter Road and drive for another 750 m
- Turn right onto Kirkpatrick Street and drive for another 400 m
- Turn left and drive for another 270 m



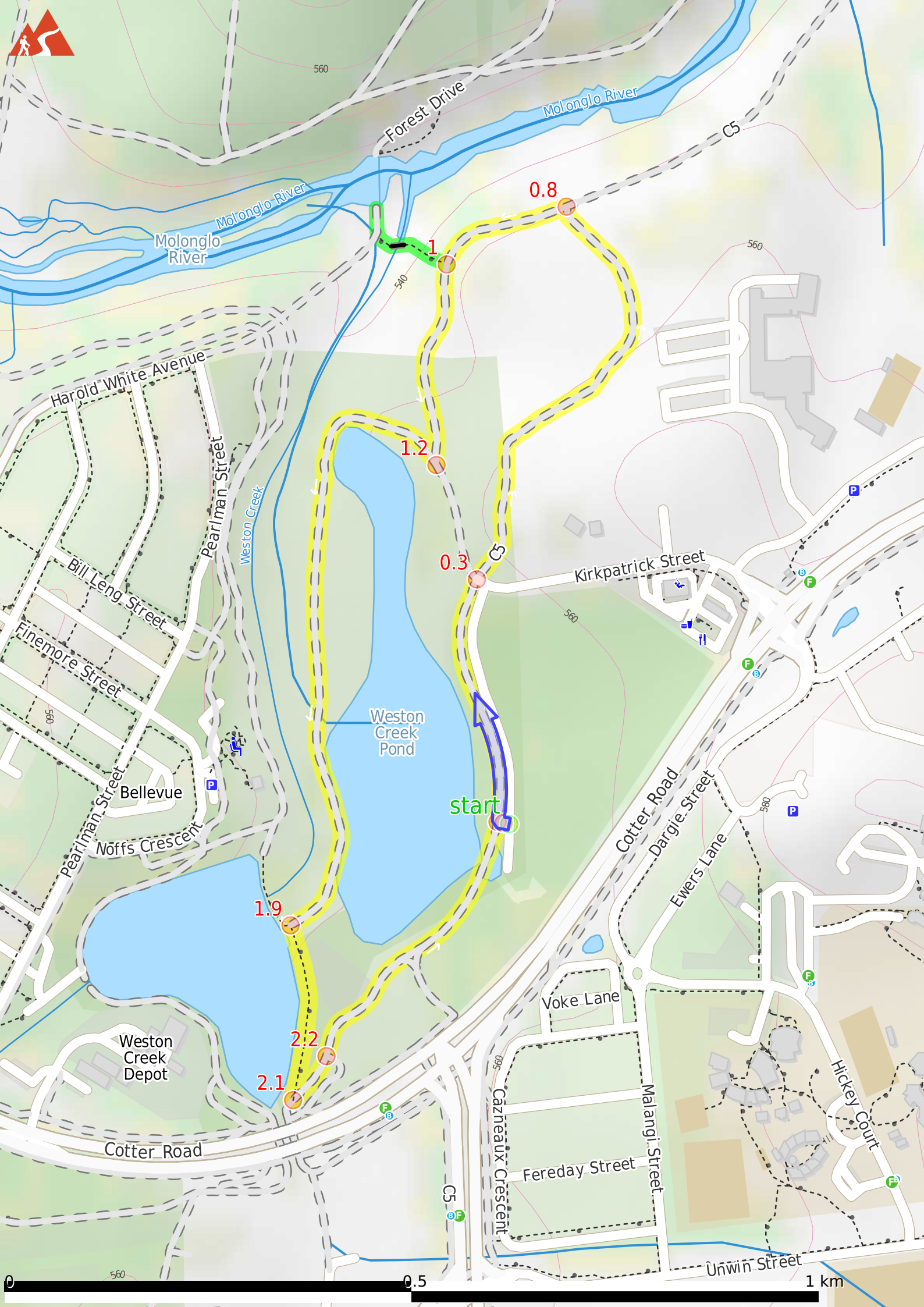
Before you start any journey ensure you;

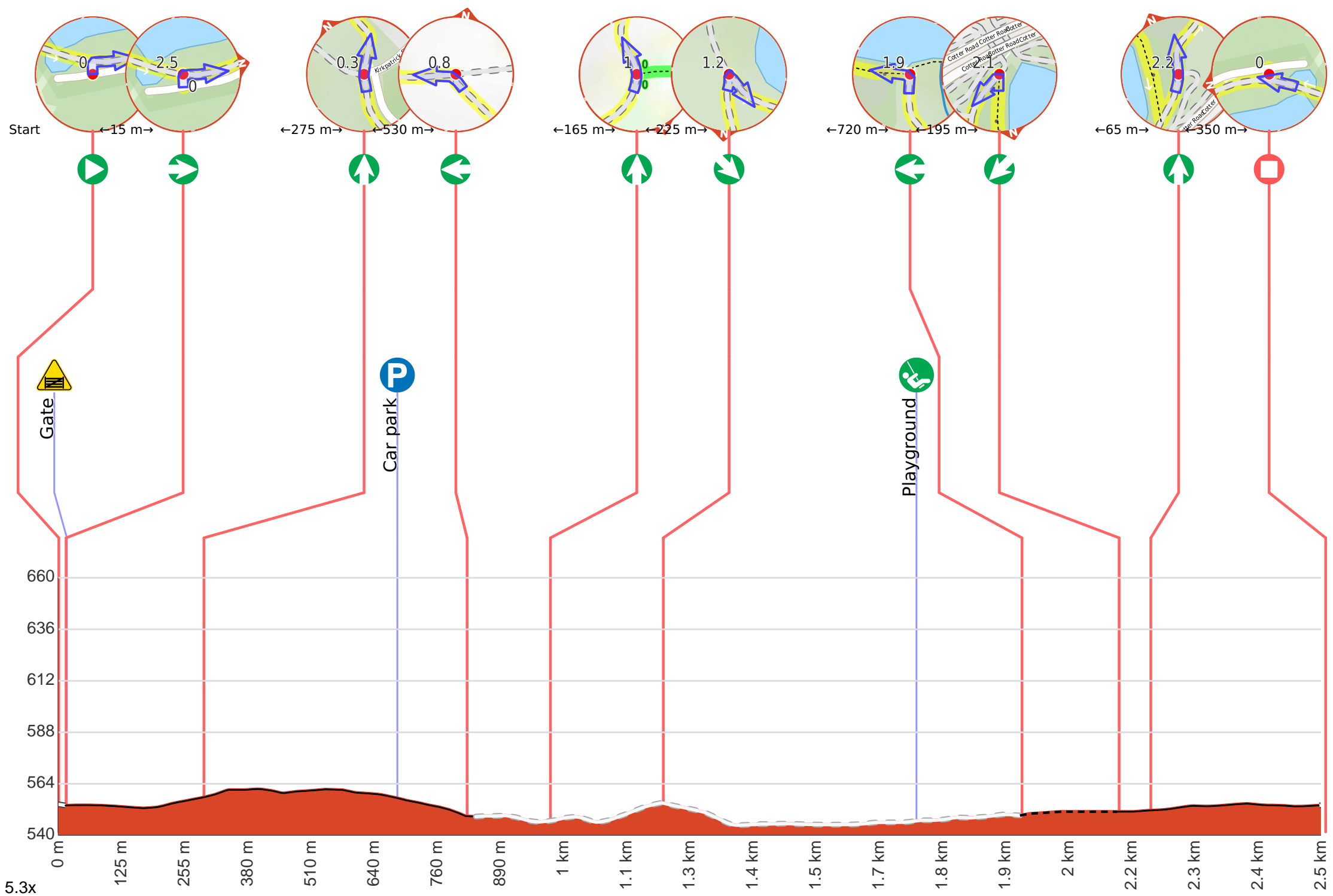
- Tell someone you trust where you are going and what to do if you are late returning
- Have adequate equipment, supplies, skills & knowledge to undertake this journey safely
- Consider weather forecasts, park/track closures & fire dangers
- Can respond to emergencies & call for help at any point
- Are healthy and fit enough for this journey

If not, change plans and stay safe. It is okay to delay and ask people for help.

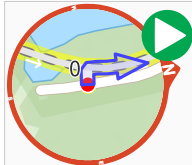
Share
Bushwalk.com
/i/3TJYSD







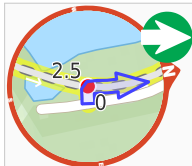
Getting started: From the end of the car park near Weston Creek Pond, head towards the pond and pass through the bollard next to the metal gate. Turn right and follow the formed concrete track, keeping the pond to your left. Stay on the concrete path as you pass by Kirkpatrick Street to your right to continue along Weston Creek Pond Circuit.



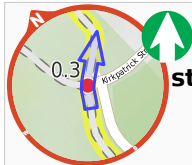
Start.



Find the gate at the start.



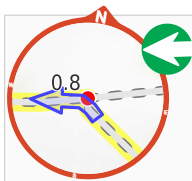
Turn right.



After another 275 m **continue straight.**

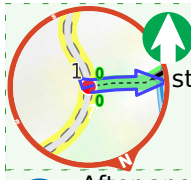


After another 390 m pass the car park (40 m on your right).



After another 140 m **turn left.**

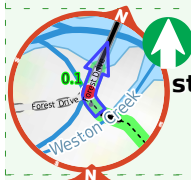
Start of an optional side trip: A little optional side trip taking you to a viewpoint over Molonglo River, if you also want to see it. Keep in mind that this track may not be as accessible and flat as the main track.



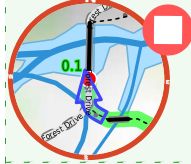
To start this optional side trip continue straight here. **Start.**



After another 60 m cross the bridge (about 15 m long)



After another 25 m **continue straight**, to head along Forest Drive.



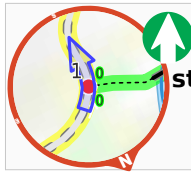
After another 25 m come to the end.



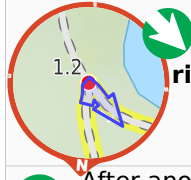
Turn around and retrace your steps back the 125 m to the main route.



Back at the main route turn sharp left and follow on from the 990 m waypoint.



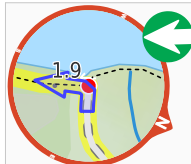
After another 165 m **continue straight.**



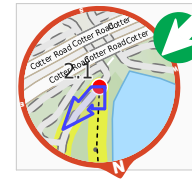
After another 225 m **turn sharp right.**



After another 510 m pass the "North Western Neighbourhood Playground" (120 m on your right).



After another 210 m **turn left.**



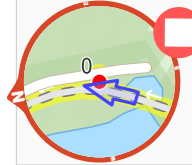
After another 195 m **turn sharp left.**



After another 65 m **continue straight.**



After another 145 m **continue straight.**



After another 205 m come to the end.