



# Culmaran Valley Track

(Bundjalung Country)

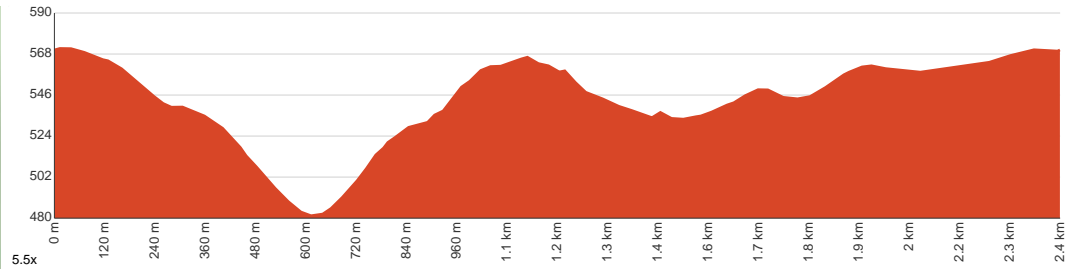
1 h to 1 h 30 min

2.4 km  
Circuit

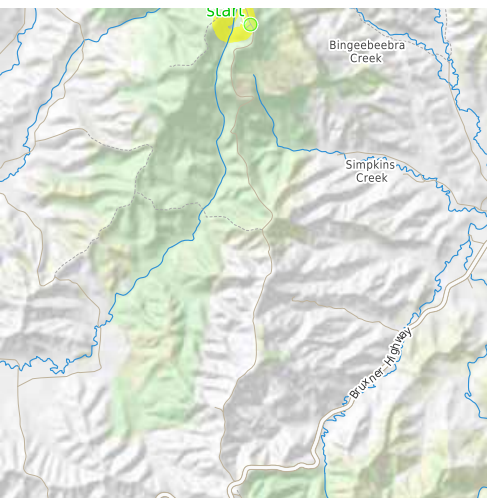
↑ 135 m  
↓ 135 m

3  
Moderate track

Starting from Cambridge Plateau picnic area this circuit walk steeply descends through the world heritage subtropical rainforest to a bridge over Culmaran Creek. At the end the walk leads along Richmond Range Road before coming back to the picnic area. Let us begin by acknowledging the Bundjalung people, Traditional Custodians of the land on which we travel today, and pay our respects to their Elders past and present.



Class 3 of 6 Formed track, with some branches and other obstacles	
<b>Quality of track</b>	Formed track, with some branches and other obstacles (3/6)
<b>Gradient</b>	Short steep hills (3/6)
<b>Signage</b>	Clearly signposted (2/6)
<b>Infrastructure</b>	Limited facilities, not all cliffs are fenced (3/6)
<b>Experience Required</b>	Some bushwalking experience recommended (3/6)
<b>Weather</b>	Storms may impact on navigation and safety (3/6)



**Getting to the start:** From Bruxner Highway, B60

- Turn on to Richmond Range Road then drive for 12 km
- Turn left and drive for another 5 m

**Before you start any journey ensure you;**

- Tell someone you trust where you are going and what to do if you are late returning
  - Have adequate equipment, supplies, skills & knowledge to undertake this journey safely
  - Consider weather forecasts, park/track closures & fire dangers
  - Can respond to emergencies & call for help at any point
  - Are healthy and fit enough for this journey
- If not, change plans and stay safe. It is okay to delay and ask people for help.

Share  
Bushwalk.com  
[ij/1TXOUQ](https://bushwalk.com/ij/1TXOUQ)



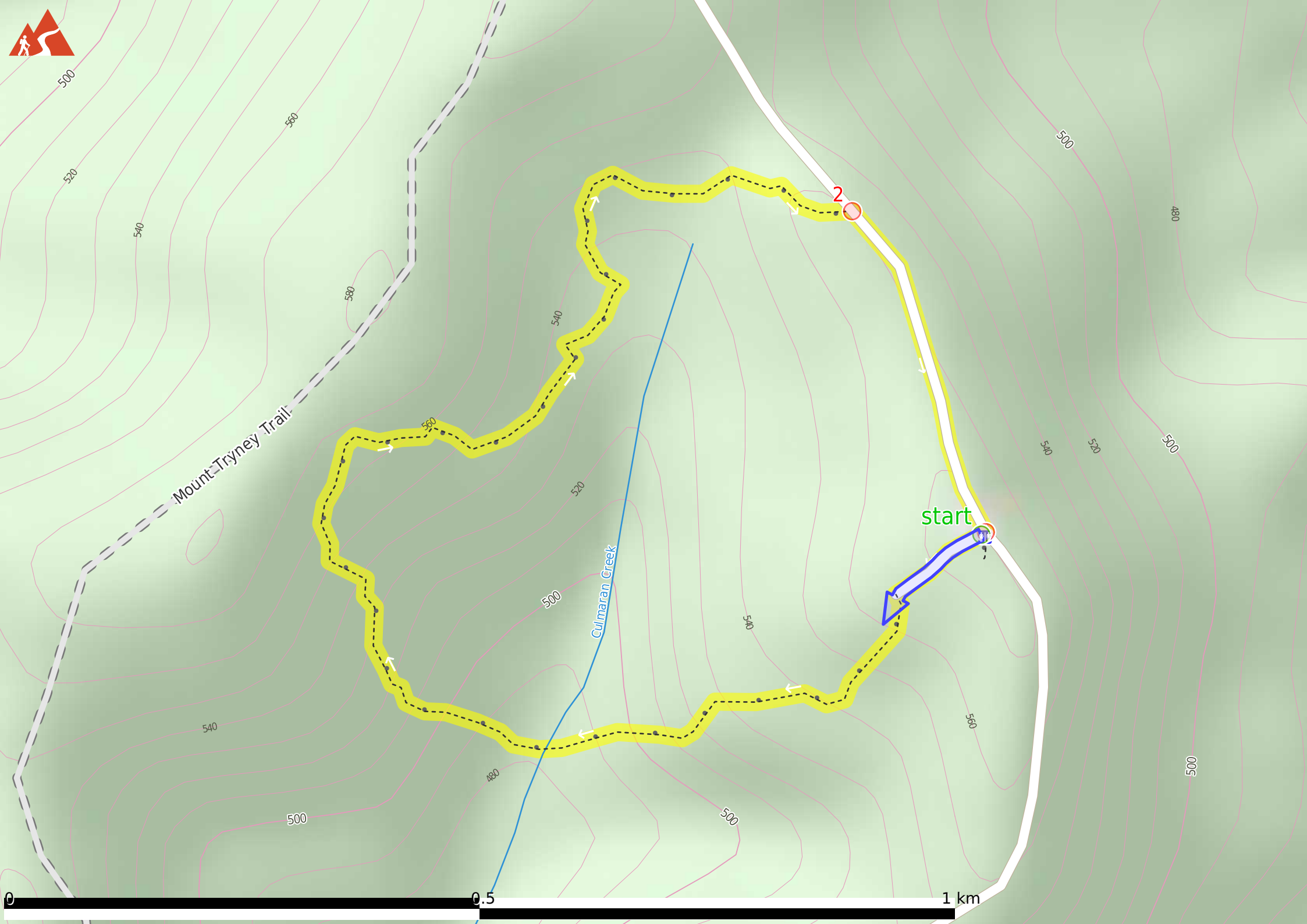


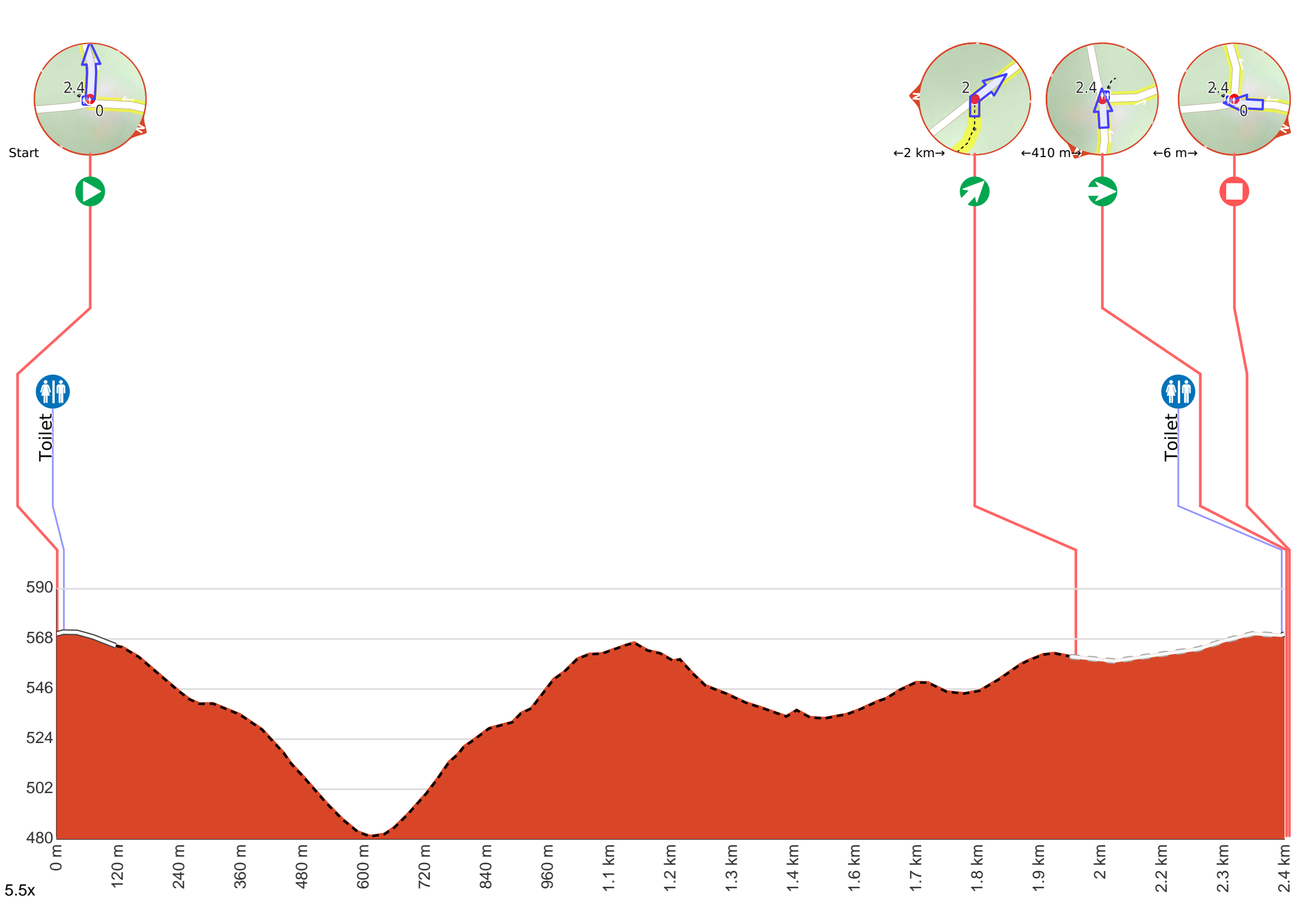
Mount Tryney Trail

Culmaran Creek

start

2



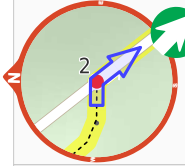




**Start.**



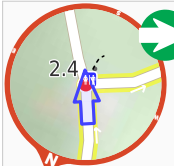
After 15 m to find the "Cambridge Plateau Day-Use Area".



After another 2 km **veer right**.



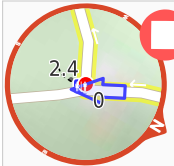
After another 400 m to find the "Cambridge Plateau Day-Use Area".



After another 9 m **turn right**.



About 70 m past the end is a viewpoint.



**The end.**



A toilet.