




Orchid Loop

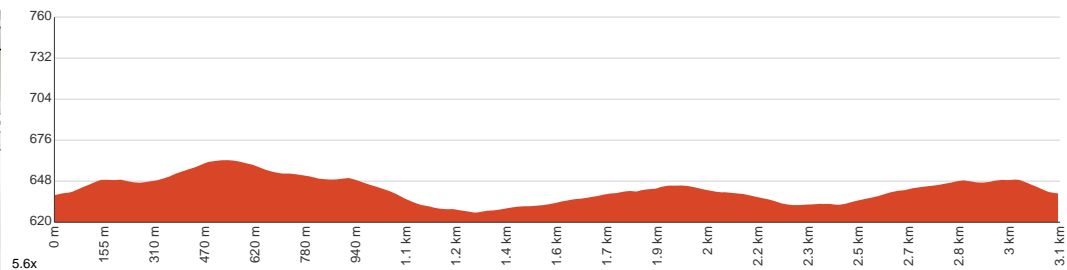
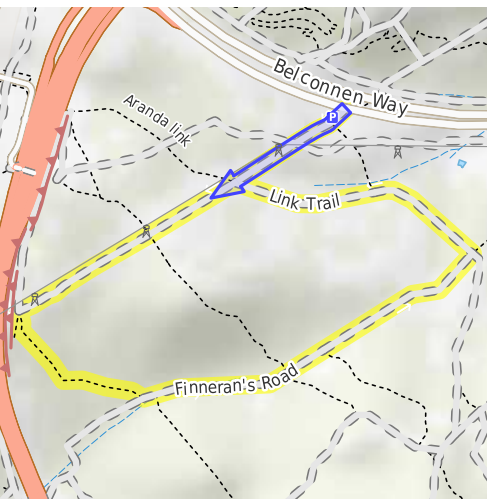
 45 min to 1 h 30 min


3.1 km
Circuit


↑ 58 m
↓ 57 m


Easy track

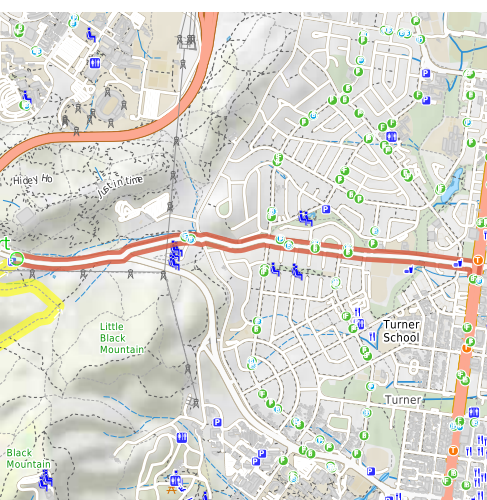
Starting from Belconnen Way, Bruce, this circuit walk explores the orchid-rich eucalypt woodland of Black Mountain Nature Reserve mostly via the Orchid and Finneran's Road tracks. Expect to see lots of eye-catching orchids as you get deeper into the eucalypt forest, such as the native Black Mountain Leopard Orchid. There are more than 60 species growing in the reserve, including the Donkey Orchids and the purple Waxlip Orchid. Don't expect to spot them all as flowering times may vary, but springtime in general will lead to a satisfactory experience. Keep an eye out for kangaroos and cockatoos whilst flower spotting. You can catch sight of the colossal Telstra Tower rising above Black Mt. Summit throughout the walk. Be careful when entering and exiting the highway as there can be high traffic during peak hours. Let us begin by acknowledging the Traditional Custodians of the land on which we travel today, and pay our respects to their Elders past and present.



Class 2 of 6 Clear and well formed track or trail	
Quality of track	Clear and well formed track or trail (2/6)
Gradient	Gentle hills with occasional steps (2/6)
Signage	Clearly signposted (2/6)
Infrastructure	Generally useful facilities (such as fenced cliffs and seats) (2/6)
Experience Required	No experience required (2/6)
Weather	Weather generally has little impact on safety (1/6)

Getting to the start: From Northbourne Avenue, A23

- Turn on to Macarthur Avenue then drive for 2 km
- At roundabout, take exit 2 onto Fairfax Street and drive for another 600 m
- Continue and drive for another 790 m



Before you start any journey ensure you;

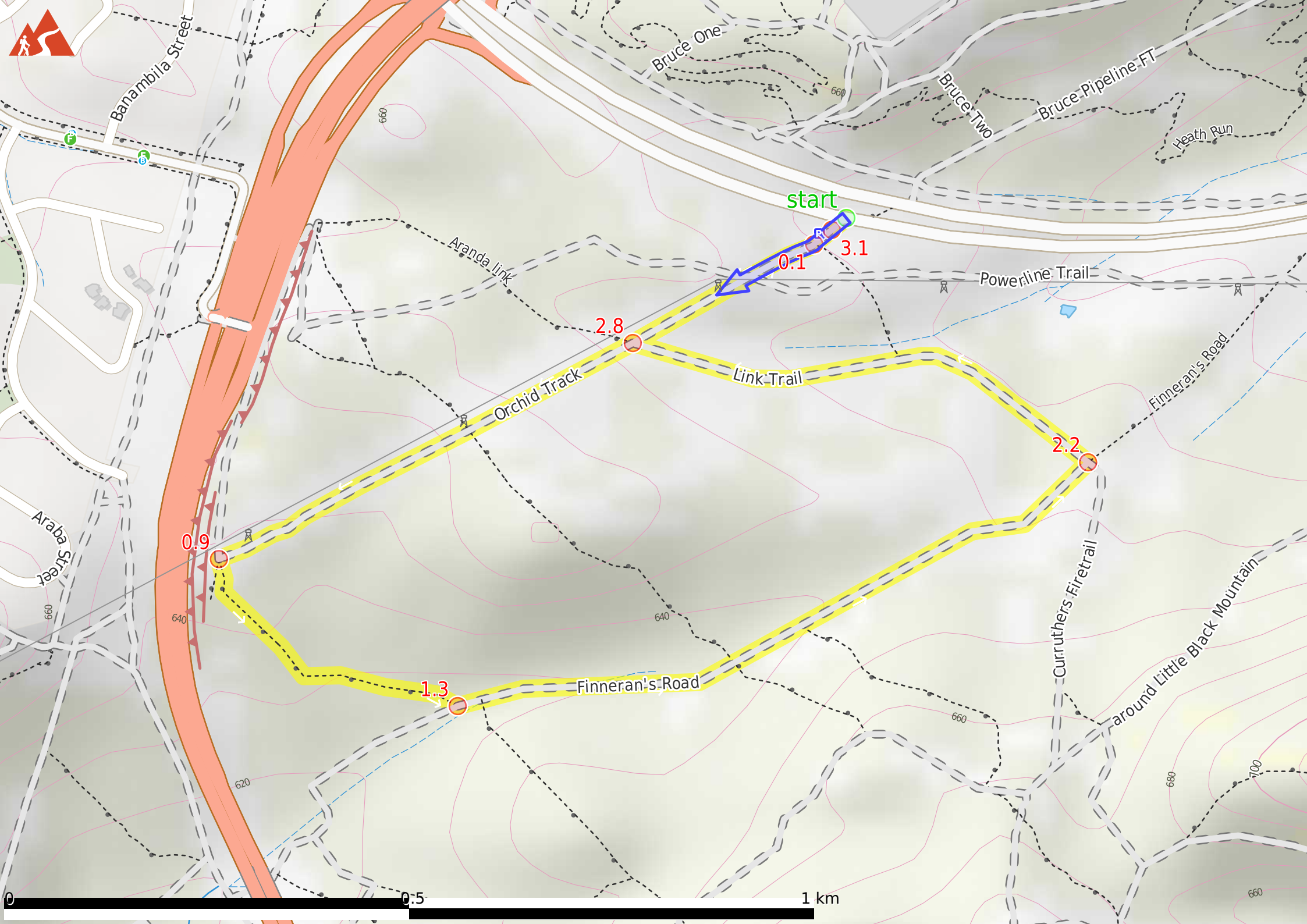
- Tell someone you trust where you are going and what to do if you are late returning
- Have adequate equipment, supplies, skills & knowledge to undertake this journey safely
- Consider weather forecasts, park/track closures & fire dangers
- Can respond to emergencies & call for help at any point
- Are healthy and fit enough for this journey

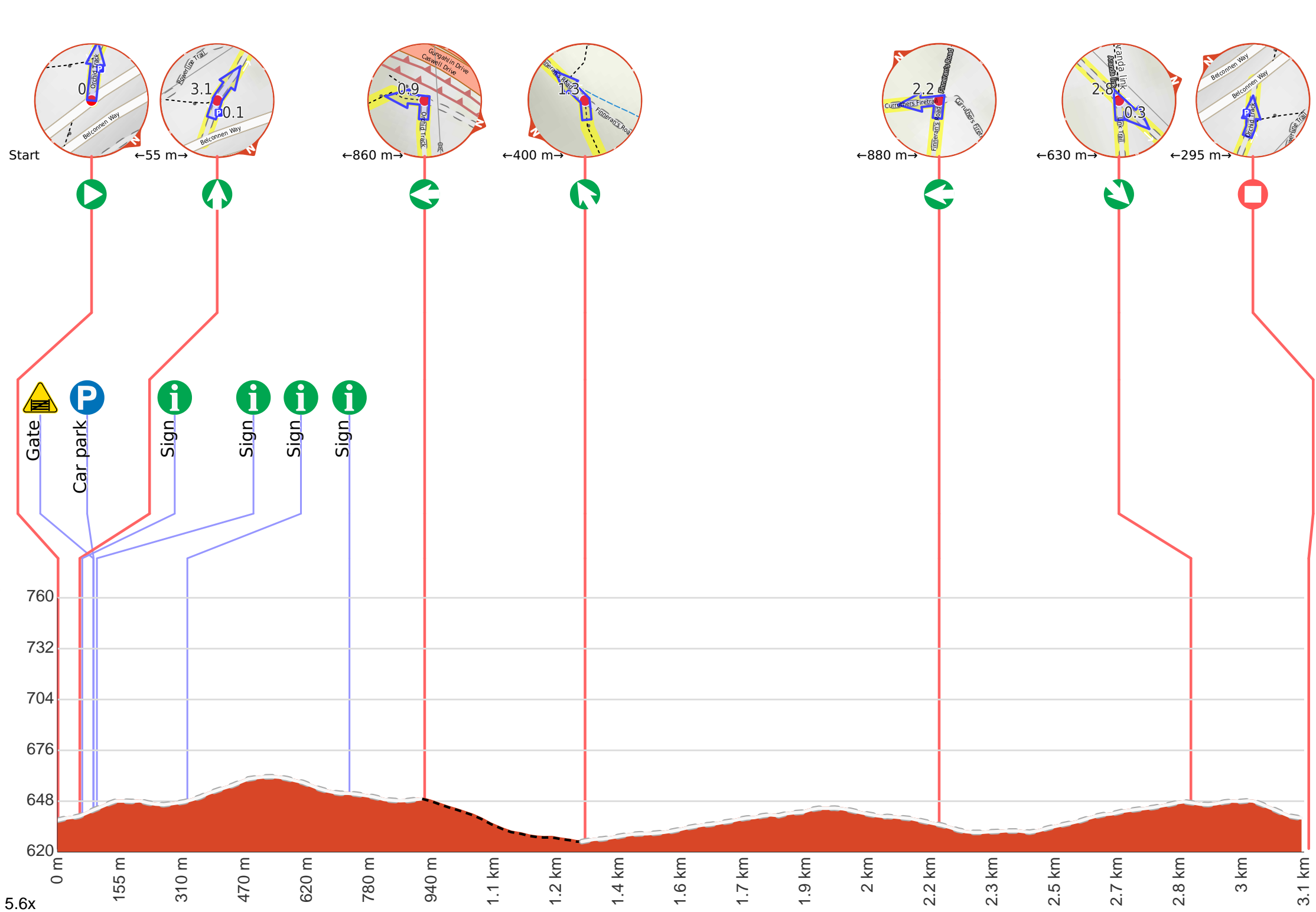
If not, change plans and stay safe. It is okay to delay and ask people for help.

Share

[Bushwalk.com](https://bushwalk.com/j/1PHZZN)
[/j/1PHZZN](https://bushwalk.com/j/1PHZZN)







Getting started: From Belconnen Way(575 metres southeast of intersection with Caswell Drive), head towards the metal gate next to a couple of informative signposts along the dirt path, passing by the black “Canberra Nature Park - Black Mountain Reserve” sign to your right. Pass through the gap next to the gate and join the fire trail(Orchid Track), moving directly away from the road. Continue straight on the track until the track divides near Caswell Drive, then turn sharp left as you avoid the track with the gate to continue along Orchid Loop(counterclockwise).

At the intersection of Orchid Track & Belconnen Way **Start** heading along Orchid Track (a vehicle track).

After 90 m head through/around the gate.

Then pass the car park (8 m on your right).

Continue straight, to head along Orchid Track.

After another 6 m pass the sign (on your left).

After another 35 m pass the sign (on your right).

After another 50 m (at the intersection of Orchid Track & Powerline Trail) **continue straight**, to head along Orchid Track.

After another 170 m (at the intersection of Orchid Track & Aranda link) **continue straight**, to head along Orchid Track.

Then pass the sign (9 m on your right).

After another 400 m pass the sign (6 m on your right).

Continue straight, to head along Orchid Track.

After another 360 m **turn left**.

After another 400 m **veer left**, to head along Finneran's Road.

After another 30 m **continue straight**, to head along Finneran's Road.

After another 320 m **continue straight**, to head along Finneran's Road.

After another 100 m **continue straight**, to head along Finneran's Road.

After another 430 m (at the intersection of Finneran's Road & Curruthers Firetrail) **turn left**, to head along Curruthers Firetrail.

After another 285 m (at the intersection of Link Trail & Curruthers Firetrail) **continue straight**, to head along Link Trail.

After another 345 m (at the intersection of Aranda link & Orchid Track) **turn sharp right**, to head along Orchid Track.

After another 170 m come to a sign.

At the intersection of Orchid Track & Powerline Trail **continue straight**, to head along Orchid Track.

After another 90 m **continue straight**.

After another 30 m come to the end.