



# Echo Point to Eastern Skyway Station

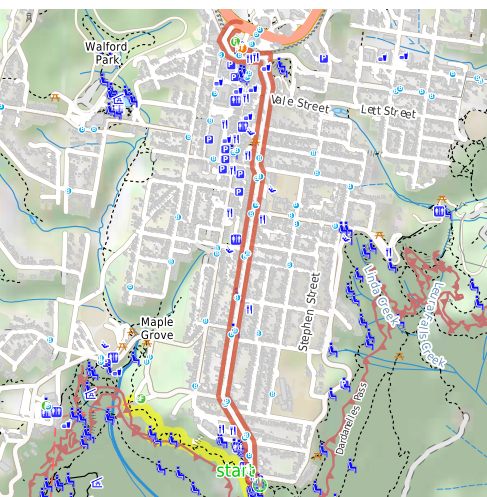
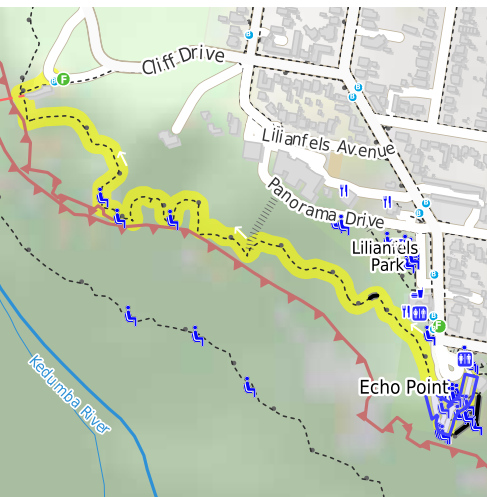
(Dharug & Gundungurra Country)

 1 h 30 min to 3 h

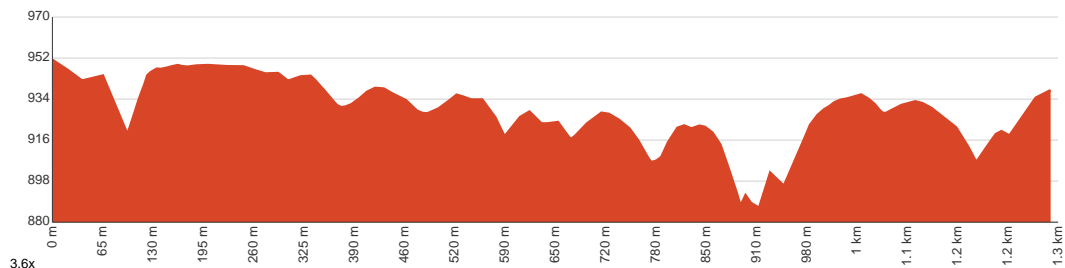
  
2.6 km  
Return

  
↑ 397 m  
↓ 397 m

  
Moderate track



This walk follows the Prince Henry Cliff Walk from Echo point to the Scenic Skyway eastern station. The pleasant cliff top walk explores many great lookouts. There is the option to go for a ride on the Skyway one way or return (fee applies). This walk can be done one way, there is vehicle access at both ends of the Skyway. Let us begin by acknowledging the Dharug & Gundungurra people, Traditional Custodians of the land on which we travel today, and pay our respects to their Elders past and present.



**Class 3 of 6**  
Formed track, with some branches and other obstacles

<b>Quality of track</b>	Formed track, with some branches and other obstacles (3/6)
<b>Gradient</b>	Gentle hills with occasional steps (2/6)
<b>Signage</b>	Directional signs along the way (3/6)
<b>Infrastructure</b>	Limited facilities, not all cliffs are fenced (3/6)
<b>Experience Required</b>	No experience required (1/6)
<b>Weather</b>	Weather generally has little impact on safety (1/6)

**Getting to the start:** From

- Turn on to Bathurst Road, BMD then drive for 165 m
- At roundabout, take exit 1 onto Gang Gang Street, BMD and drive for another 105 m
- Turn right onto Lurline Street, BMD and drive for another 2.3 km

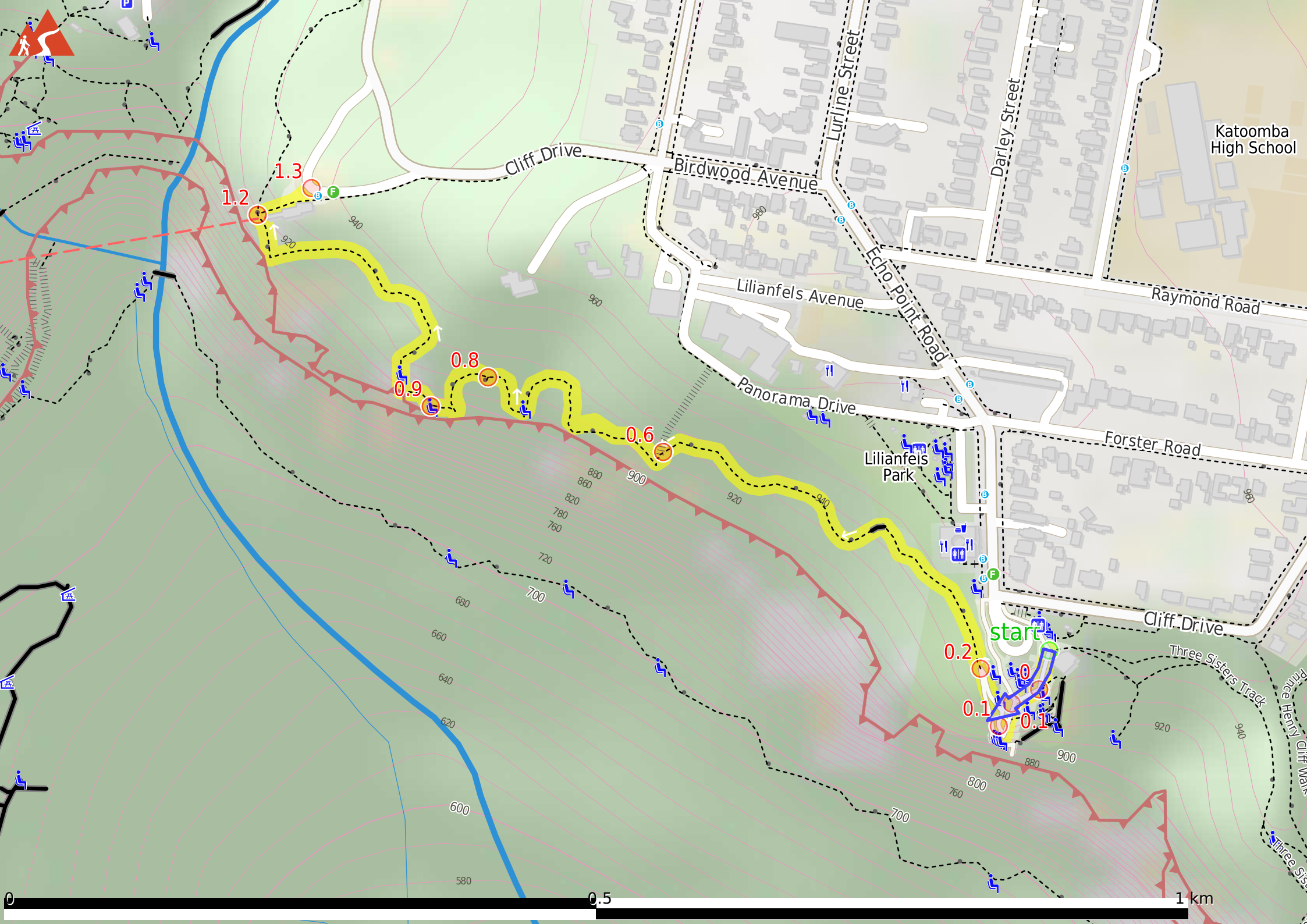
## Before you start any journey ensure you;

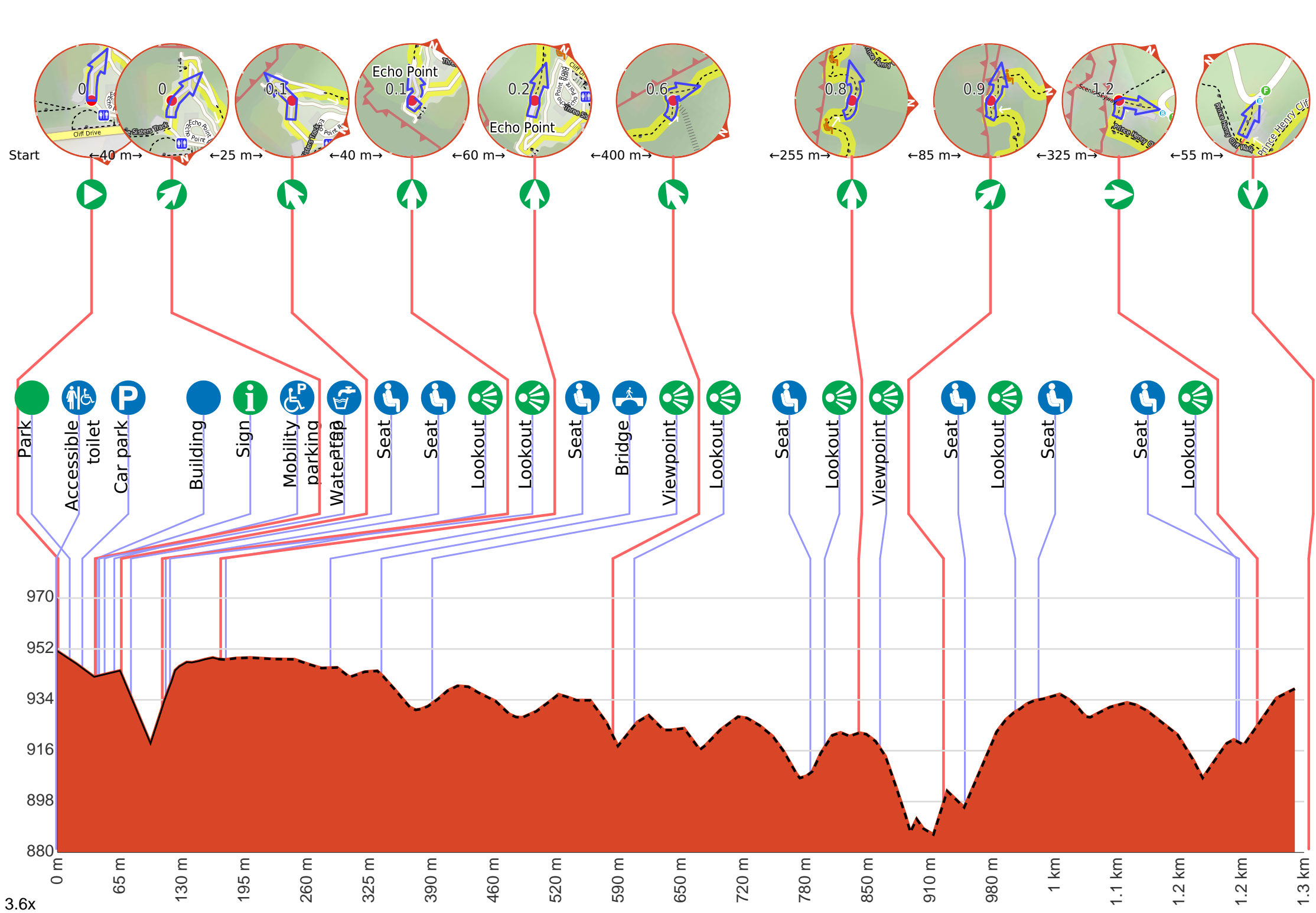
- Tell someone you trust where you are going and what to do if you are late returning
- Have adequate equipment, supplies, skills & knowledge to undertake this journey safely
- Consider weather forecasts, park/track closures & fire dangers
- Can respond to emergencies & call for help at any point
- Are healthy and fit enough for this journey

If not, change plans and stay safe. It is okay to delay and ask people for help.

Share  
[Bushwalk.com](https://bushwalk.com/j/0ZOGJ5)  
[/j/0ZOGJ5](https://bushwalk.com/j/0ZOGJ5)









**Getting started:** From the front of the Echo Point Visitor Center and mobility car parking area, this walk heads downhill following the 'Echo point' sign across the wide open concrete area. After about 30m the walk leads past a large concrete seat (on the left) then passes a similar seat after another 20m. Continue gently downhill towards the view for another 30m to the stunning views at the formal Echo Point lookout.



**Start.**



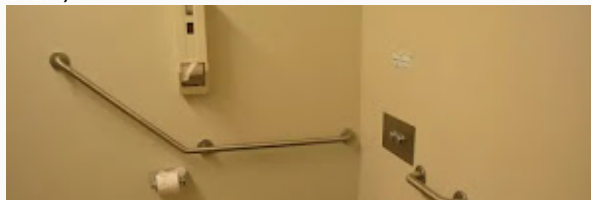
Find the Echo Park at the start.



After another 8 m **continue straight.**



Toilet Accessible (about 20 m back from the start).



Accessible unisex toilet and parents change room. MLAK key access, although gate may be locked after hours. Toilet has hand rails, there is a basin with soap and running water, mirror and baby change table.



There is a car park (about 20 m back from the start).



After another 15 m find the "Echo Point Information Centre" (20 m on your left).



This modern building at Echo Point is a great source of information. It is open daily from 9am-5pm (except Christmas Day). There is a large range of books, maps and information about the area (and ice creams). There are toilets opposite the entrance, and mobility parking opposite. For more information, phone 1300 653 408.



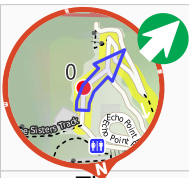
After another 8 m pass the "Katoomba Tourist Information Centre" (5 m on your left).



After another 10 m find the "Parking Accessible" (20 m on your right).



There are three signposted mobility parking spaces. They are 3.8m wide and 5.5 deep. Smooth gentle ramp access from the parking area nearby facilities.



**Veer right.**



Then pass the water tap (20 m on your right).



After another 25 m **veer left.**



After another 10 m find the "Seat" (9 m on your left).



Large concrete seat, no backrest. The seat is 40cm high, 1.5m deep and about 5.5m long. The height and depth vary slightly along the length.



After another 20 m (Queen Elizabeth Lookout) **turn sharp right.**



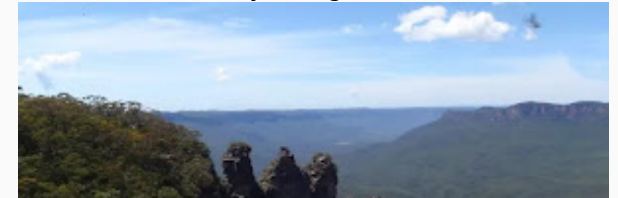
After another 15 m find the "Seat" (15 m on your left).



Large concrete seat, no backrest. The seat is 40cm high, 1.5m deep and about 5.5m long. The height and depth vary slightly along the length.



After another 60 m find the "Queen Elizabeth Lookout" (20 m on your right).



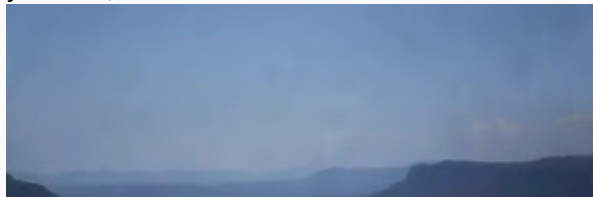
Queen Elizabeth Lookout offers a breathtaking outlook, directly over the Three Sisters rock formation, and into the Jamison Valley. One of a number of viewing platforms at Echo Point, this platform is slightly lower than the more popular road-side area, however it is wheelchair-accessible, also offering some shade and seating. The platform was officially named in 1955, after a visit from Queen Elizabeth II the preceding year.



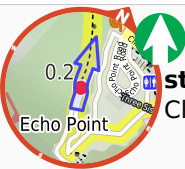
**Continue straight.**



After another 8 m find the "Echo Point" (10 m on your left).



Echo Point is the Blue Mountains' most famous lookout, home to one of the best photo opportunities for the Three Sisters. Visited by over two million tourists each year, this popular spot also serves as the starting point for numerous bush walks of various grades, securing its position as one of the most popular locations in the Blue Mountains.



After another 50 m **continue straight**, to head along Prince Henry Cliff Walk.



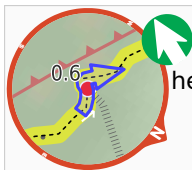
After another 115 m pass a seat (25 m on your right).



After another 55 m cross the bridge (about 10 m long)



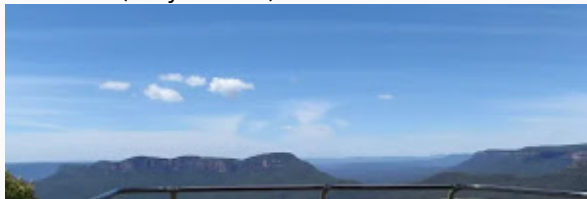
After another 40 m come to the "Kedumba View".



After another 185 m **veer left**, to head along Prince Henry Cliff Walk.



After another 20 m find the "Lady Darley Lookout" (on your left).



Lady Darley Lookout is a moderately-sized, fenced lookout, found on the Prince Henry Cliff Track. The lookout can also be accessed directly by a track from Panorama Drive. There is an information sign describing the view and the traditional naming of the natural features. The panoramic views from the lookout are great, from Kings Tableland on the left to Mount Solitary, Narrow Neck and parts of Scenic World on the far right.



After another 180 m pass a seat (on your right).



After another 15 m find the "Allambie Lookout" (on your left).



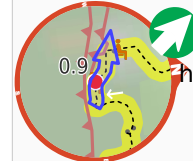
Allambie Lookout is a small, fenced lookout on the side of the Prince Henry Cliff Track. The lookout provides an opportunity to enjoy the valley view and the sights of the Three Sisters, Kings Tablelands and Mount Solitary.



After another 35 m **continue straight**, to head along Prince Henry Cliff Walk.



After another 20 m come to the "Little Milou Lookout" (8 m on your left).



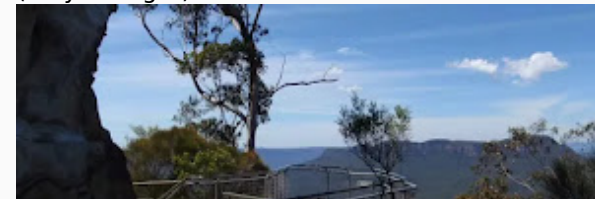
After another 65 m **veer right**, to head along Prince Henry Cliff Walk.



After another 20 m pass a seat (on your left).



After another 50 m find the "Wollumai Lookout" (on your right).



Wollumai Lookout is a small, fenced lookout on the side of the Prince Henry Cliff Track. The lookout is on a sandstone platform at the base of a cliff, and looks over a much larger drop into the Jamison Valley. There is a bench seat to enjoy the views over the valley, including Mount Solitary, Narrow Neck and glimpses of the Three Sisters.



After another 25 m pass a seat (on your right).



After another 205 m find the "Seat" (6 m on your right).



A timber slat bench seat on a concrete platform. The seat is 53cm high, 35cm deep and 1.8m wide with a 40cm high backrest.



Then find the "Cliff View Lookout" (on your right).



This large, fenced wheelchair accessible lookout provides great mountain views of Mt Solitary, Kedumba Valley, Narrow Neck and across to Scenic World. There's a bench seat at the back of the lookout to enjoy the views from. The lookout fence is 1.2m high, the platform is 7.8x5.5m wide.



Turn around here and retrace the main route for 1.3 km to get back to the start.



After another 20 m (at the intersection of Prince Henry Cliff Walk & access to Prince Henry Cliff Walk) **turn right**, to head along access to Prince Henry Cliff Walk.



After another 55 m come to "Skyway Station".



The Scenic Skyway is a cable car that bridges the 720-metre gap across the valley, in front of Katoomba Falls. This is the remote station, with the main station based at Scenic World. Visitors can travel one way, in either direction (Adult \$10 child \$5) or take a return trip (Adult \$16 child \$8), with family discounts available. The Skyway enjoys a full 360-degree view, with a glass floor allowing you to look straight down at the trees 270m below. This is a spectacular and popular attraction for visitors to the area and is open daily from 9am to 5pm.



"Katoomba Falls Reserve".