

# Bogong High Plains Rd Landslip

## November 2022



## Active landslide – BHP Road

- There is a large active landslide on Bogong High Plains (BHP) Road above Bogong Village.
- The landslide is believed to have been caused by heavy rainfall in the area since early October.
- BHP Road is severely impacted by debris from the landslide and is **closed** to the public between Mount Beauty and Falls Creek.
- Access from Mount Beauty to the areas of Bogong Village, Falls Creek and Howman's Gap will be severely restricted for a number of months.





# What we are doing

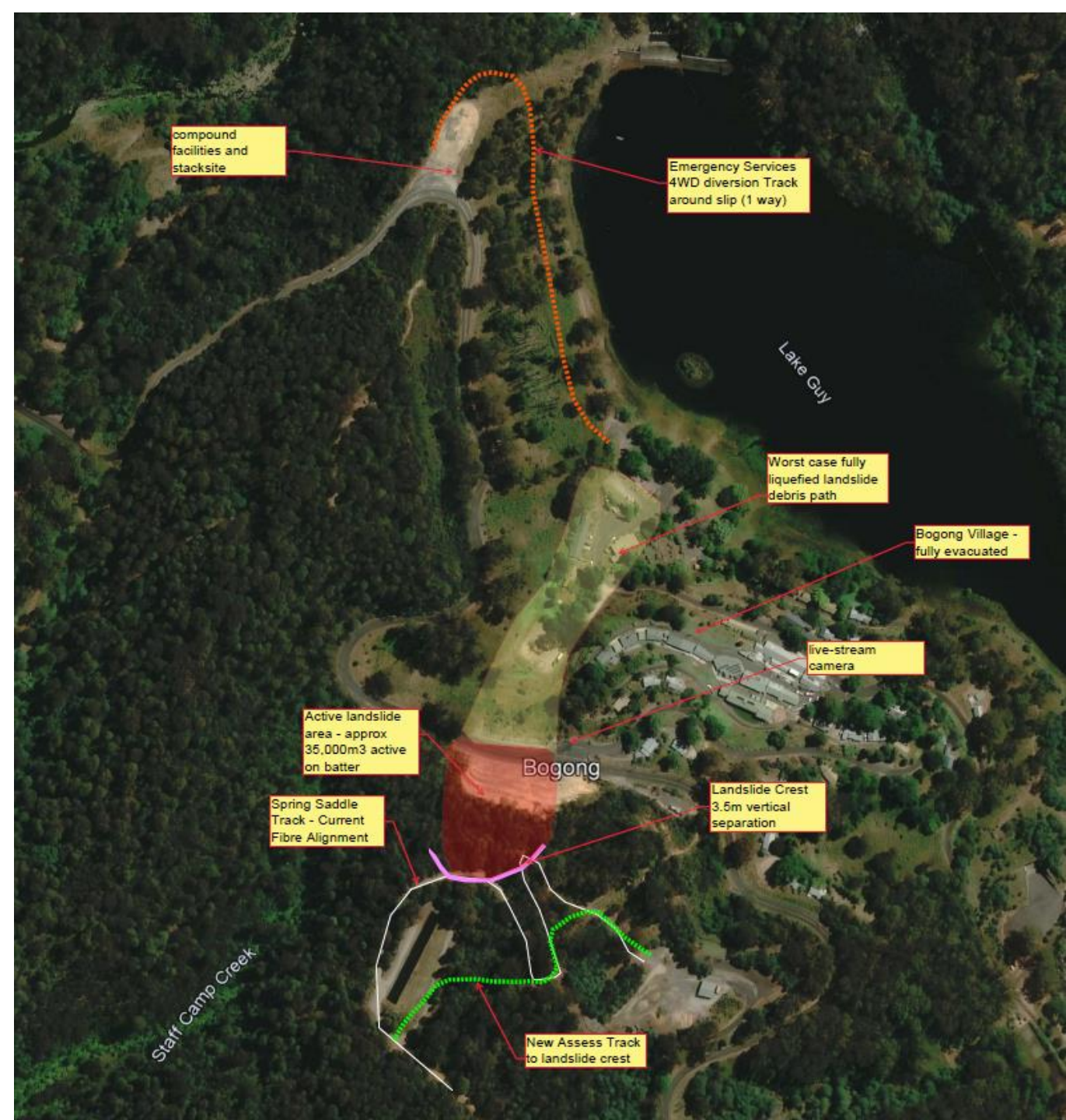
Our priority is to safely restore access to Bogong Village and Falls Creek Resort.

- Emergency & Essential Services Access:
  - Emergency & essential services via a one-way 4WD diversion track
  - 4WD access is available for essential services (e.g. AGL, telecommunication services, DoT, designated Falls Creek workers – as approved by the IC)

Works have been completed to protect critical optic fibre communication line to Falls Creek.

To reinstate public access on BHP Road we are working towards short and long term goals:

- **Short Term** – single lane access
- **Long Term** – full road access





## Short Term Remediation Works (single lane access)

We are working to restore **single lane access** by **February/March 2023** – depending on weather and changing on-site conditions.

Short term works will be completed utilising:

- **Long reach excavators** to remove debris from the side of the landslide and activate material to move downhill.
- **Remote controlled loaders** to remove additional material and further activate the landslide.
- If required, we may utilise **cranes** to remove debris from the top of the landslide.
- When safe, we will install a **retaining structure** to safely open one lane of traffic.





# Long Term Remediation Works (full road access)

## Investigation and design

- We have completed construction of access track for drilling machines to start boring works.
- Detailed survey of landslip including drone survey is underway.
- Geotechnical investigation and monitoring is ongoing to support development of long term repair designs.

## Site Works

- Long term repair works will start as soon as possible.
- Works are constrained by the alpine weather and 2023 ski season.
- We cannot accurately estimate when full access will be restored until full cause and extent of the landslip is understood.

